

# **Hazel class home learning**

**Tuesday 23<sup>rd</sup> November**



# Literacy / topic

**LI: I can caption pictures from the Great Fire of London.**

**Yesterday, we sequenced the events of the Great Fire of London. Today, we are going to practice our best handwriting, and write our own captions for the pictures on the next page.**

**If you need a bit of help, you can use the colourful semantic sentences to help you write your sentence.**

**Early Sunday morning**



**Sunday evening**



**Early Monday morning**



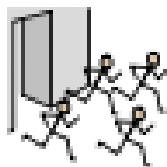
**Thursday**



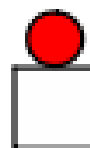
The people



escaped



on



boats.



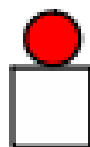
The Great Fire of London



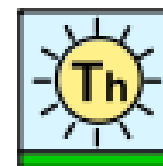
stopped



on



Thursday.



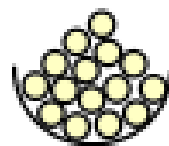
The Great Fire of London



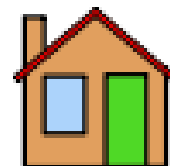
destroyed



lots of



houses.



The Great Fire of London



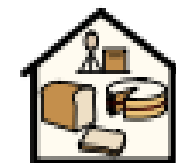
started



in



a bakery.





# Science

**LI: I can predict which items might float, and which might sink.**

**In science we have been working on making predictions, then finding out the results using experiments. This week, we will be thinking about materials that will float and materials that will sink.**

**Can you use the table on the next page to predict whether these materials and items might float or sink? If you have the materials in your house, you can have a go at testing them out and filling in the results column!**

[illegible]



# Phonics

LI: I can read and write tricky words.

Can you practice reading and writing some of these tricky words?

**to**

**I**

**he**

**she**

to

to

to

I

I

he

he

he

she

she



# PE enrichment

**Please see separate activity  
on the website for PE  
enrichment.**

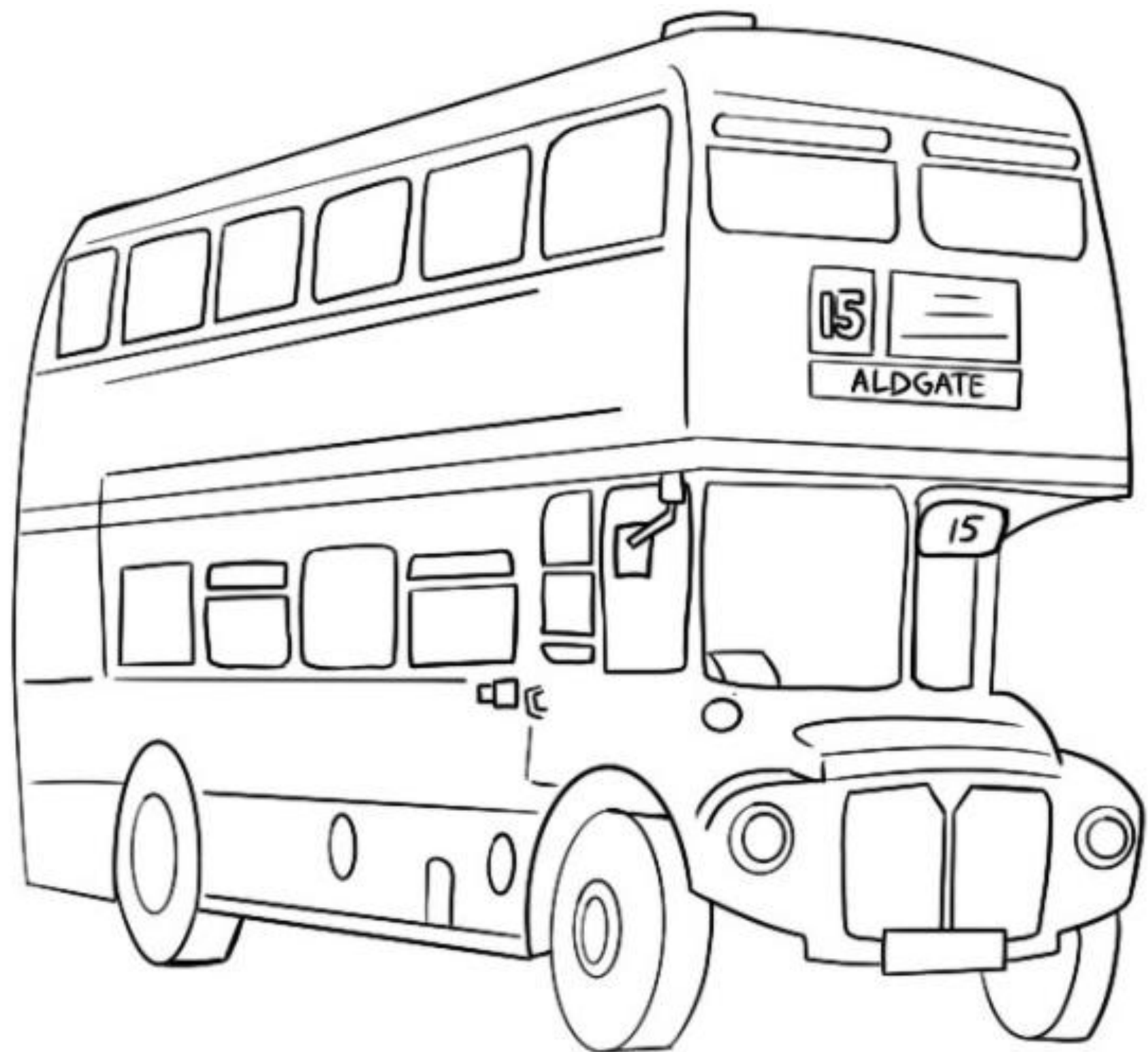


# Colouring sheets

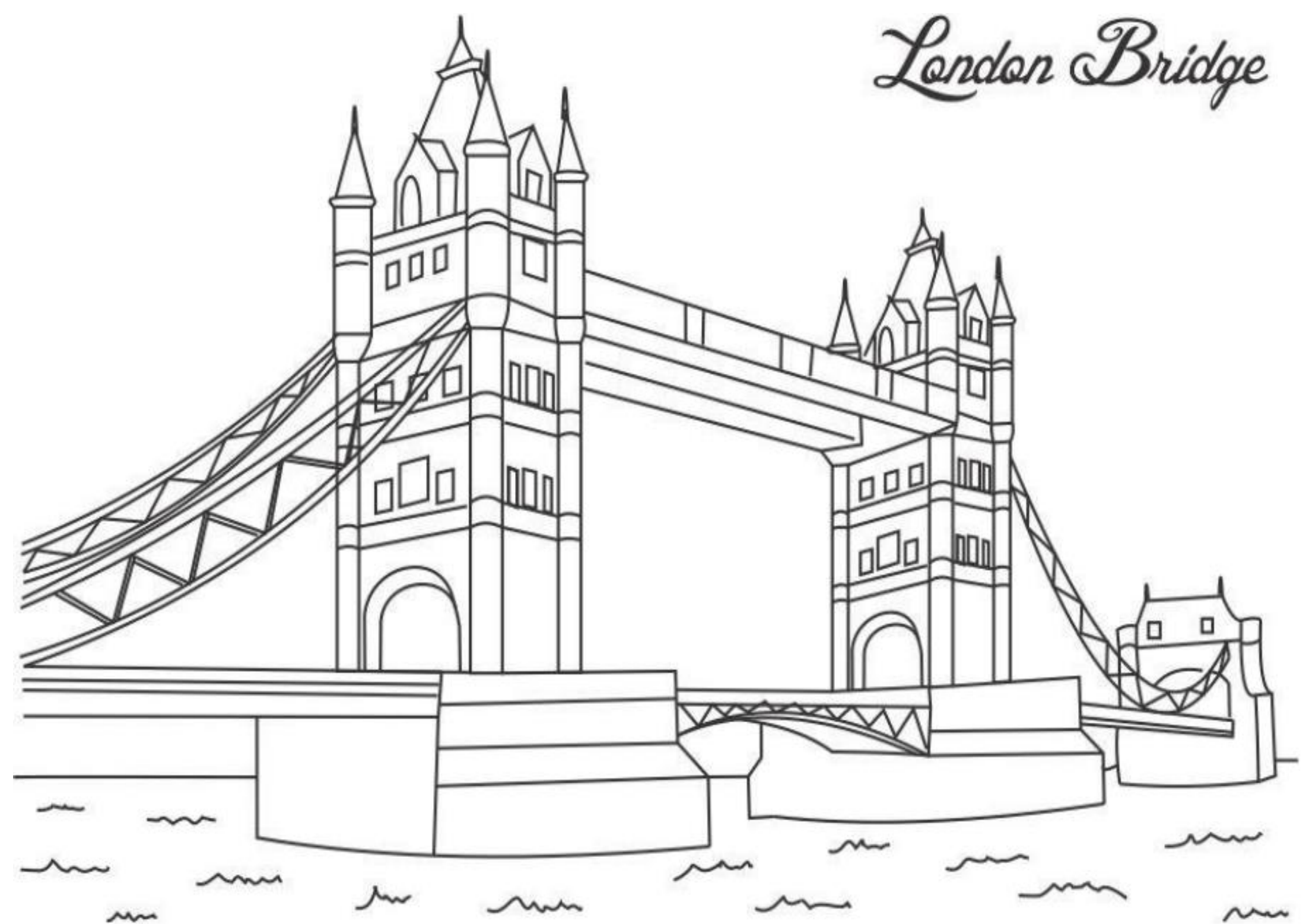
**Here are some colouring sheets for you to enjoy!**

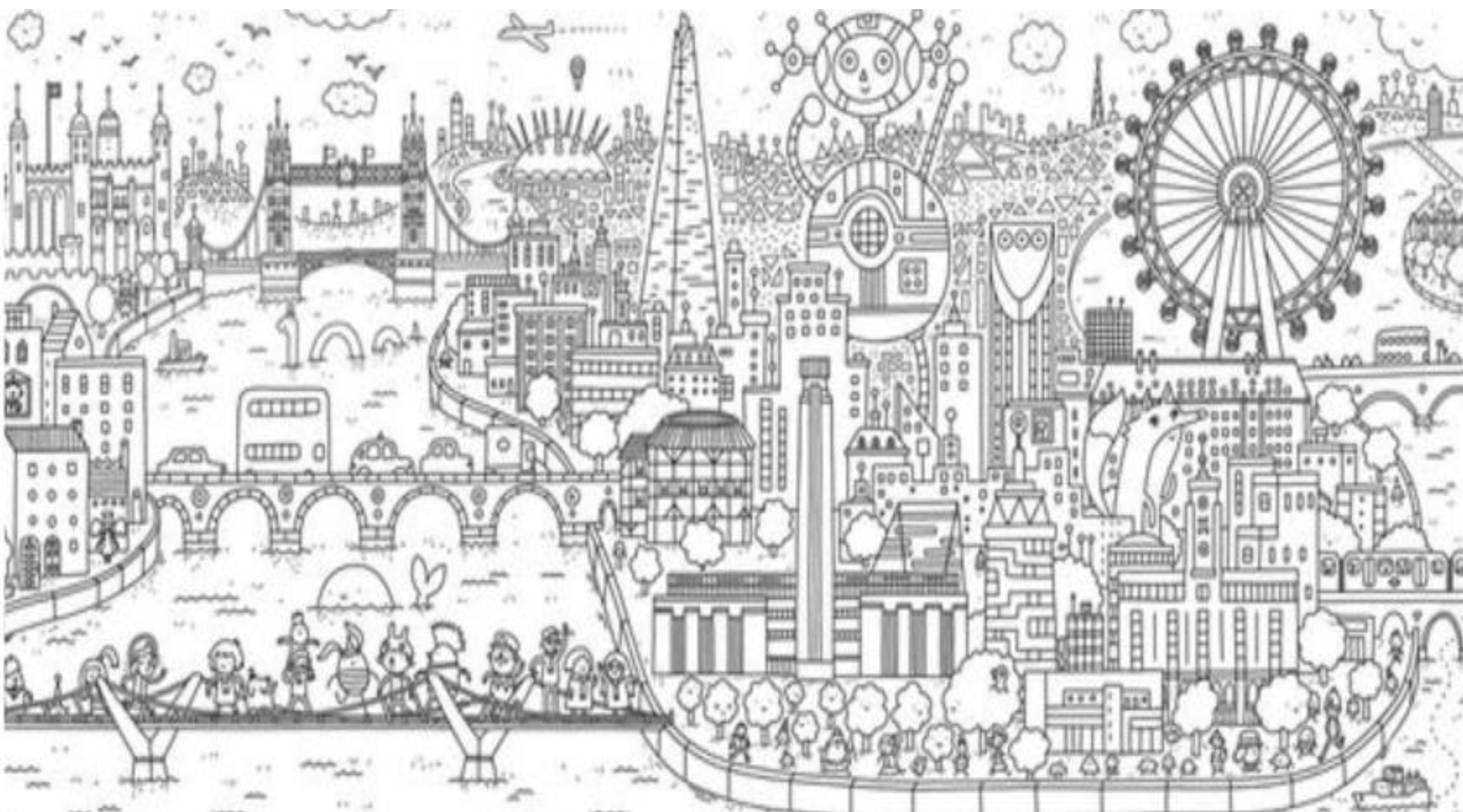
**Our topic this term is 'Bright Lights, Big City', so I have found some pictures of London for you to colour. Think about what colours you might see in the city, and how these might be different during the night time.**





# *London Bridge*







LONDON