

Sensory home learning activities 11/01/21

I would really love to see photographs of anything that you make or activities that you enjoy. You can email your completed work to me via office@ifield.kent.sch.uk . I am very happy to answer any questions or just let me know how you are getting along.

Please also send a contact email so that I can invite you to our Class Teams meeting on Friday at 1.30pm. We are looking forward to seeing you then for some virtual communication and interaction fun!

Keep safe and well

Mrs Hargood 😊

Let's begin with some music and movement

[Hola, Bonjour, HELLO! - Champiverse | GoNoodle - YouTube](#)



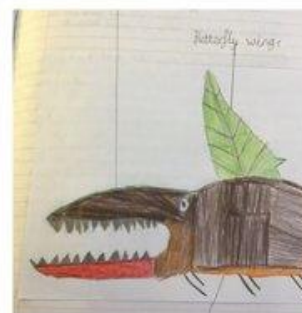
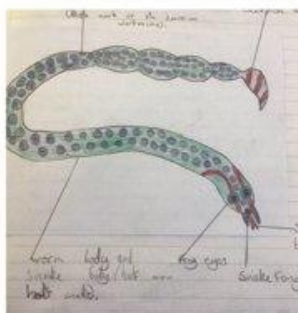
[Masaka Kids Africana Dancing To Jerusalema By Master KG Feat Nomcebo & Burna Boy - YouTube](#)



Become a beast creator!

Get creative with making monsters for our beast creator project. You can use anything you find at home. Draw a design, label the body parts. Here are some ideas to inspire you.

[Inside the Briefcase | Fantastic Beasts and Where to Find Them - YouTube](#)



PIC•COLLAGE

Exploring ice and light.

[how to make ice tea light holder - Google Search](#)

For safety use a battery-operated candle tea light rather than a candle with a flame.



Put a tin can inside a larger container.

Collect artificial or real plants and flowers and arrange inside gap between larger and smaller container.

Fill with water and freeze overnight.

Make sure you stand your ice candle holder on a tray to catch the water as it melts.

If you prefer not to make a tea light, just freezing plants and flowers in ice to explore is another option. Use a torch to shine through the ice to see how ice and light react and shine.