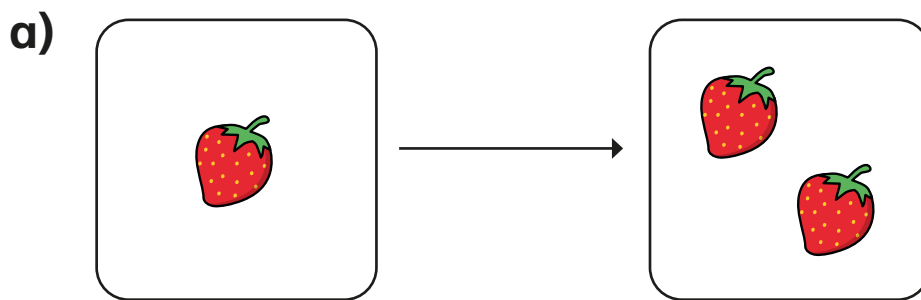


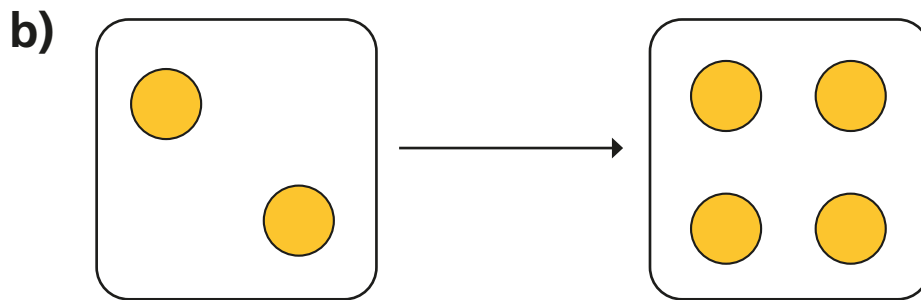
# Make doubles

**I** Complete the sentences.

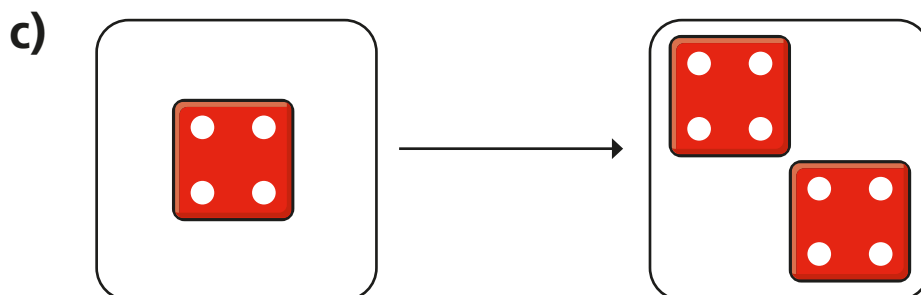
Use the pictures to help you.



Double 1 is

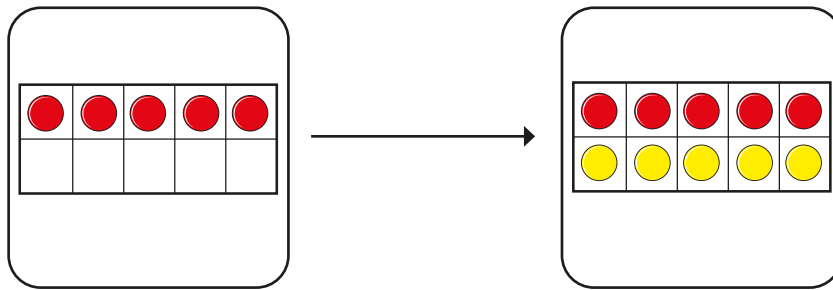


Double 2 is



Double  is

d)



Double

is

2

Match the doubles to the additions.

Double 3

Double 6

Double 10

Double 7

$6 + 6$

$7 + 7$

$3 + 3$

$10 + 10$

3

Fill in the gaps.

a) Double 15 is

b) Double 11 is

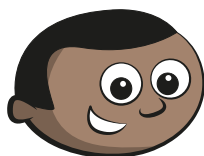
c) Double 12 is

d) Double 20 is

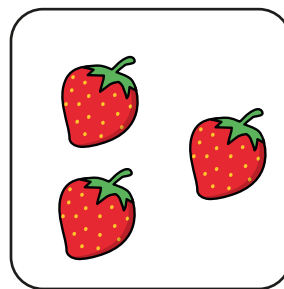
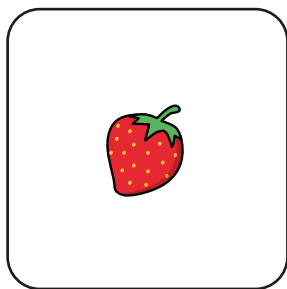
e) Double  is 8

f) Double  is 16

4



I have doubled the number of strawberries.



Do you agree with Mo? \_\_\_\_\_

Talk about it with a partner.