

Match the picture to the word to make alliteration



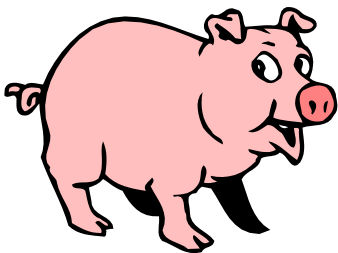
pretty



quiet



jiggly



Freddy

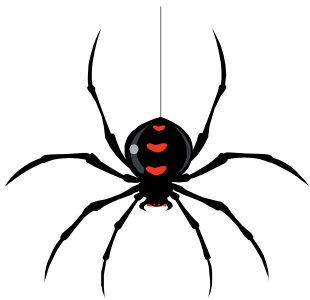


bouncy

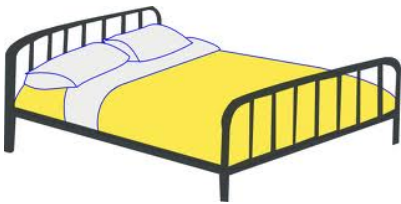
Match the picture to the word to make alliteration



angry



shiny



tall



spooky

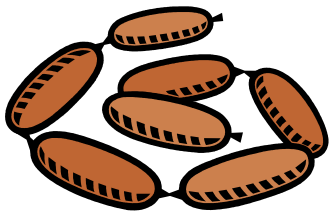


bouncy

Match the picture to the word to make alliteration



happy



shy



cuddly



silly



magic

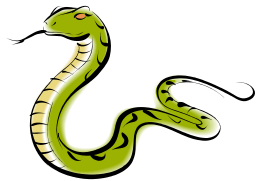
Match the picture to the word to make alliteration



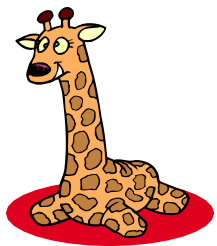
clever



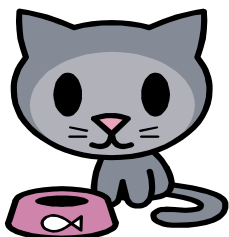
sneaky



cheeky



hungry



jolly

