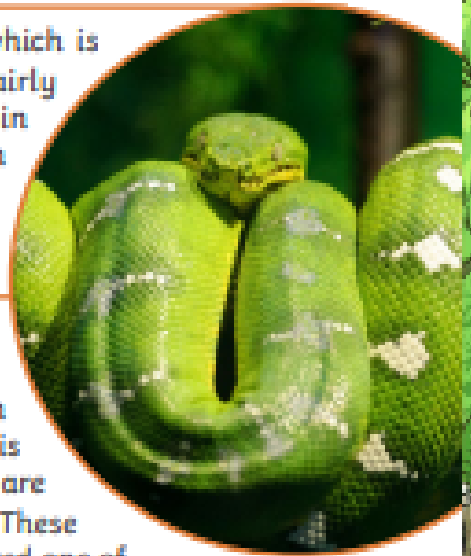


# Emerald Tree Boa

The emerald tree boa is a non-venomous snake, which is often found in the Amazon rainforest. They are fairly solitary animals and only descend to the ground in order to climb a different tree. However, they can move quite swiftly from tree to tree among the branches and foliage. As they are nocturnal, they are mostly active at night.

## Appearance

The emerald tree boa is distinctively bright green in colour with a yellow underside. They have an irregular, zigzag pattern along their back, which is sometimes compared to a lightning bolt, and they are similar in appearance to the green tree python. These highly colourful traits mean they are often considered one of the most beautiful snakes in the world.



Adult emerald tree boas can grow to reach up to 2 metres in length and over 1kg in weight. They have vertical pupils – similar to that of cats – which help them to detect their prey's movement. They have a pair of long, sharp teeth, pointed backwards, and a forked tongue. Their heads are relatively large and flat.

## Diet

They feed mostly on small mammals, such as rats, bats and possums. Younger snakes may also eat other reptiles and amphibians. They can be hunted themselves by birds of prey, such as the eagle.

## Habitat

As indicated by their name, these snakes spend most of their time inhabiting trees. Their habitat is 'arboreal', which means 'related to or resembling trees'. They usually coil themselves around branches during the day and rest their head in the middle of the coil. They can often be found near rivers or swamps but are not dependent on open water.

## Interesting Facts

- Emerald tree boas have a life expectancy of approximately 20 years in captivity or slightly less in the wild.
- They are not dangerous to humans and are therefore sometimes kept as pets.

"Emerald Tree Boa" by Eric Kilgus licensed under CC BY 3.0