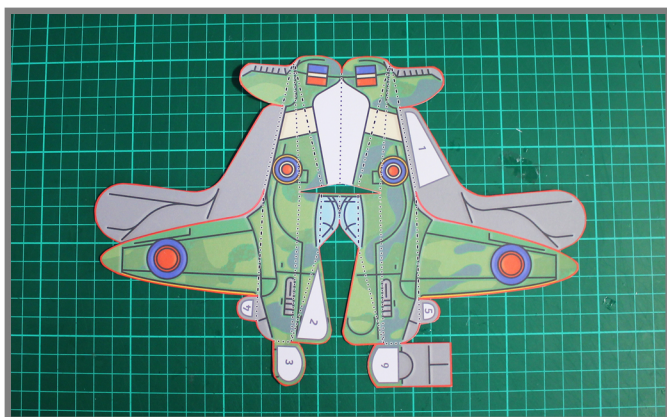


# Spitfire Paper Craft Instructions

..... Fold Down  
- - - - - Fold Up

## Step 1)

Carefully cut out the model using the solid outline. Be sure to cut out the small triangle in the centre of the plane, as shown.



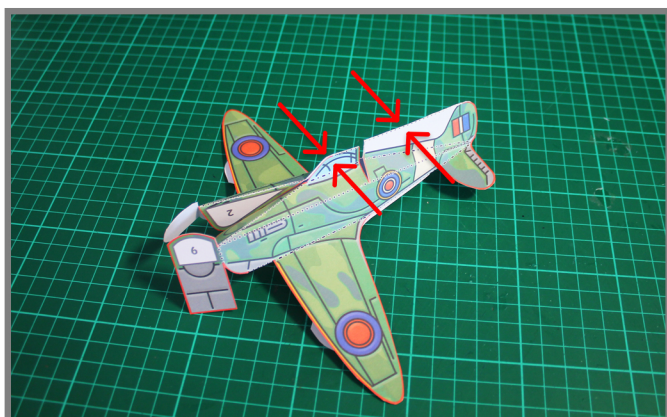
## Step 2)

Fold along the dotted lines following the key, as shown.



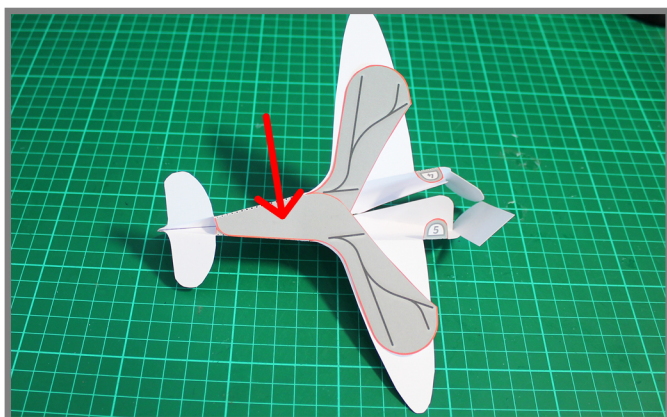
## Step 3)

Glue the backs of the cockpit and tail section together, as shown.



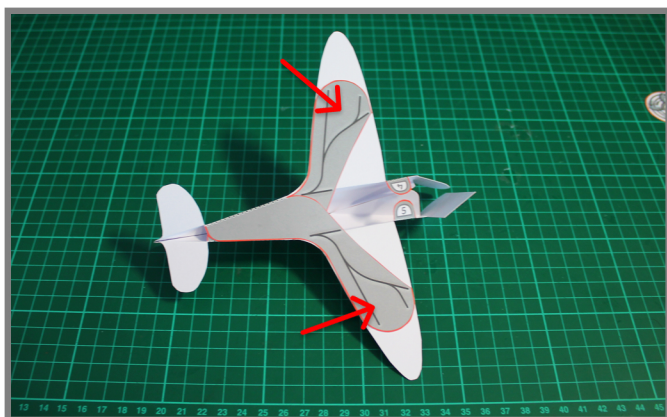
## Step 4)

Fold around the bottom of the plane and glue the underside together using tab 1, as shown.



# Spitfire Paper Craft Instructions

..... Fold Down  
- - - - - Fold Up



## Step 5)

Glue the underside to the bottom of the wings, as shown. Make sure the bottom and top of the wings line up.



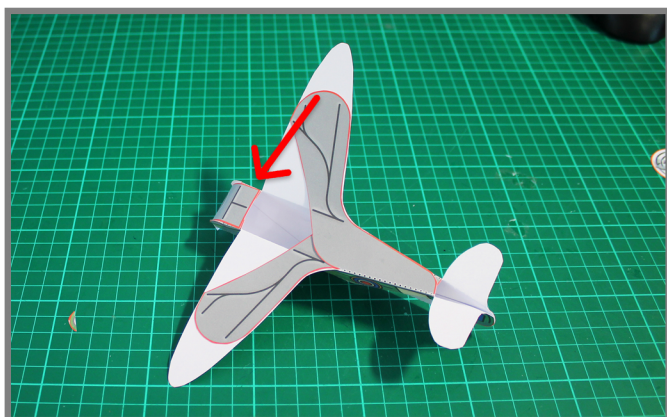
## Step 6)

Glue down tab 1 on the front of the plane, as shown.



## Step 7)

Glue down tab 2 on the front of the plane, as shown.



## Step 8)

Curve around the bottom of the plane and glue it in place using tabs 3 and 4, as shown.

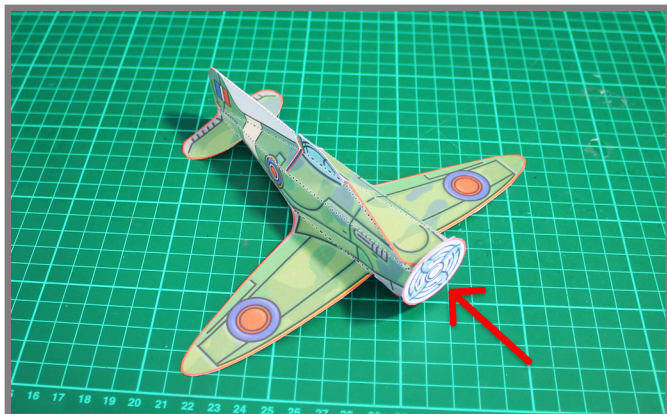


# Spitfire Paper Craft Instructions

..... Fold Down  
- - - - - Fold Up

## Step 9)

Glue the propeller onto the front of the plane using tab 5, as shown.



## Step 10)

(Optional) Cut the white section off of the tail, as shown.

