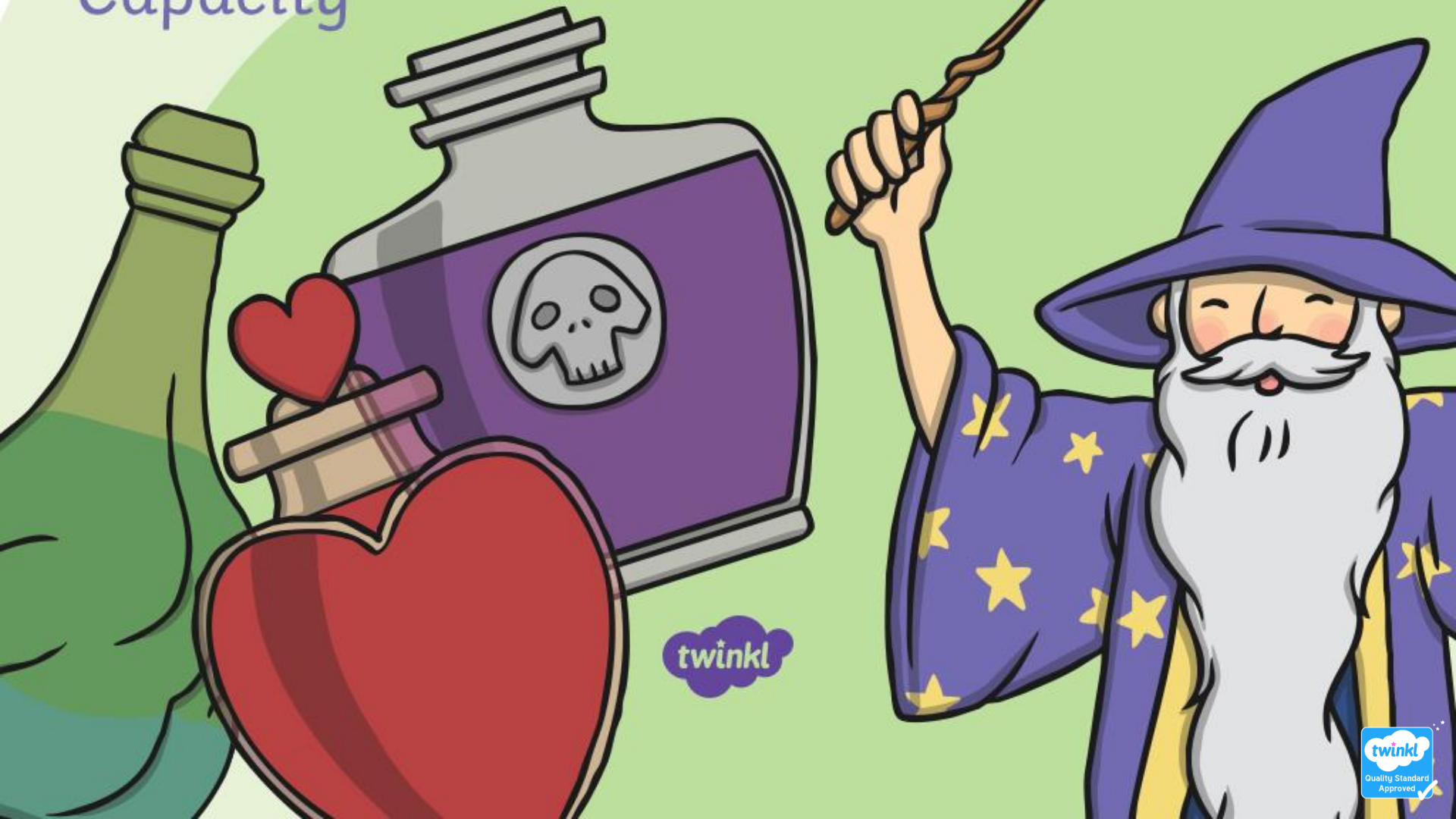


# Making Potions

Capacity



twinkl

# Pick the Potion

Will the Wizard, needs help finding the right potions.  
Find the potion that is **full**.



# Correct!



# Pick the Potion

Will the Wizard, needs help finding the right potions.  
Find the potion that is **empty**.





# Correct!



next

# Pick the Potion

Will the Wizard, needs help finding the right potions.  
Find the potion that is **half full**.



back

next

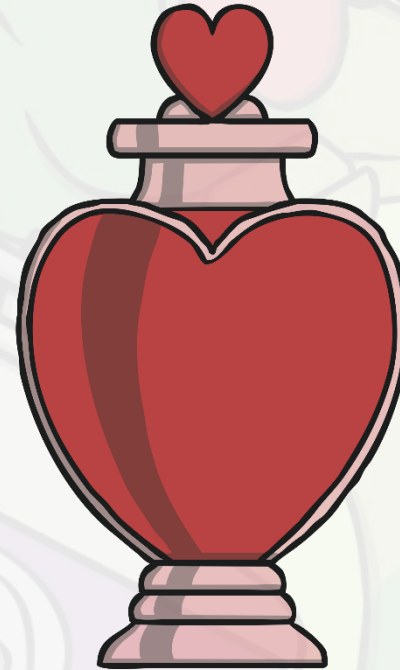
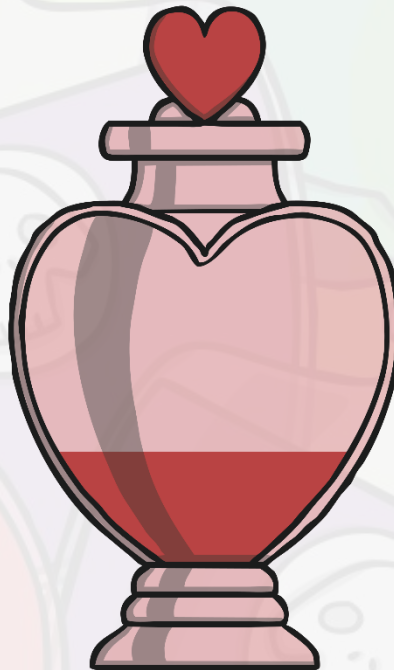
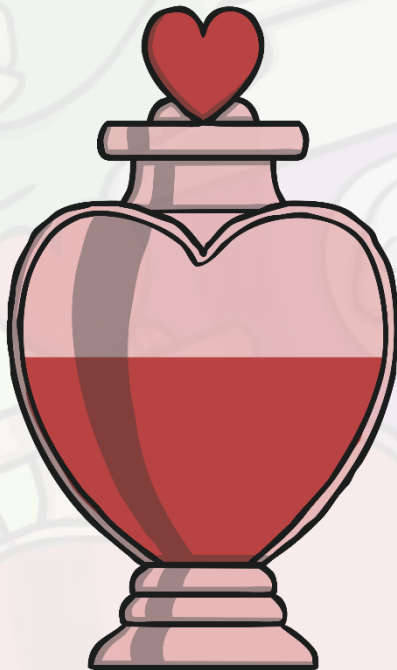
# Correct!



# Order the Potions



Hocus the cat, needs help to put the potions in order for the wizard.  
Click on the bottle that has the **least**.





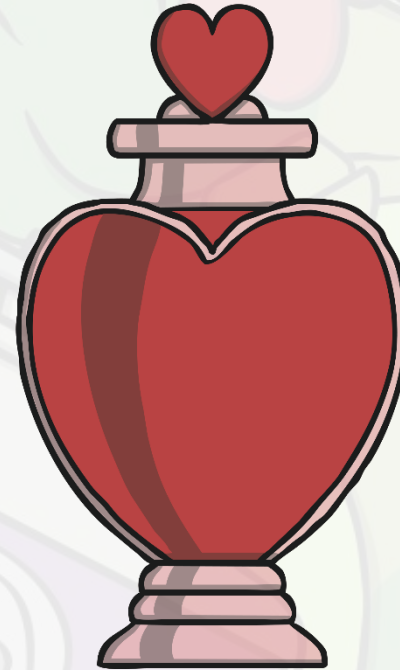
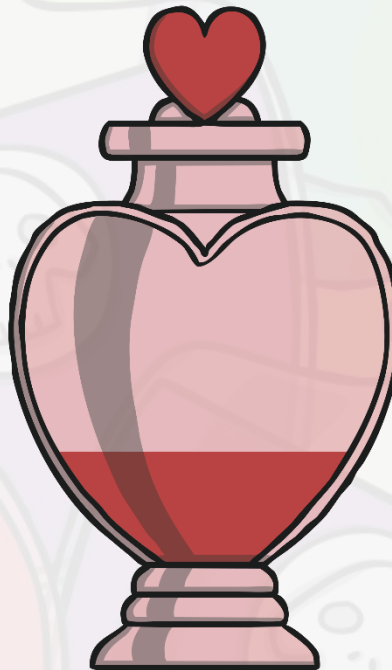
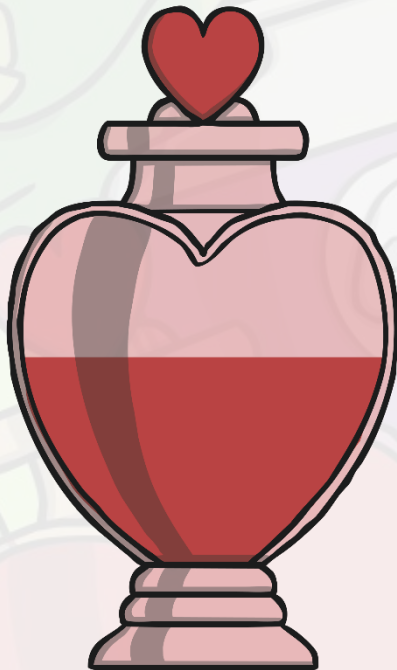
# Correct!



# Order the Potions



Hocus the cat, needs help to put the potions in order for the wizard.  
Find the bottle that has the **most**.



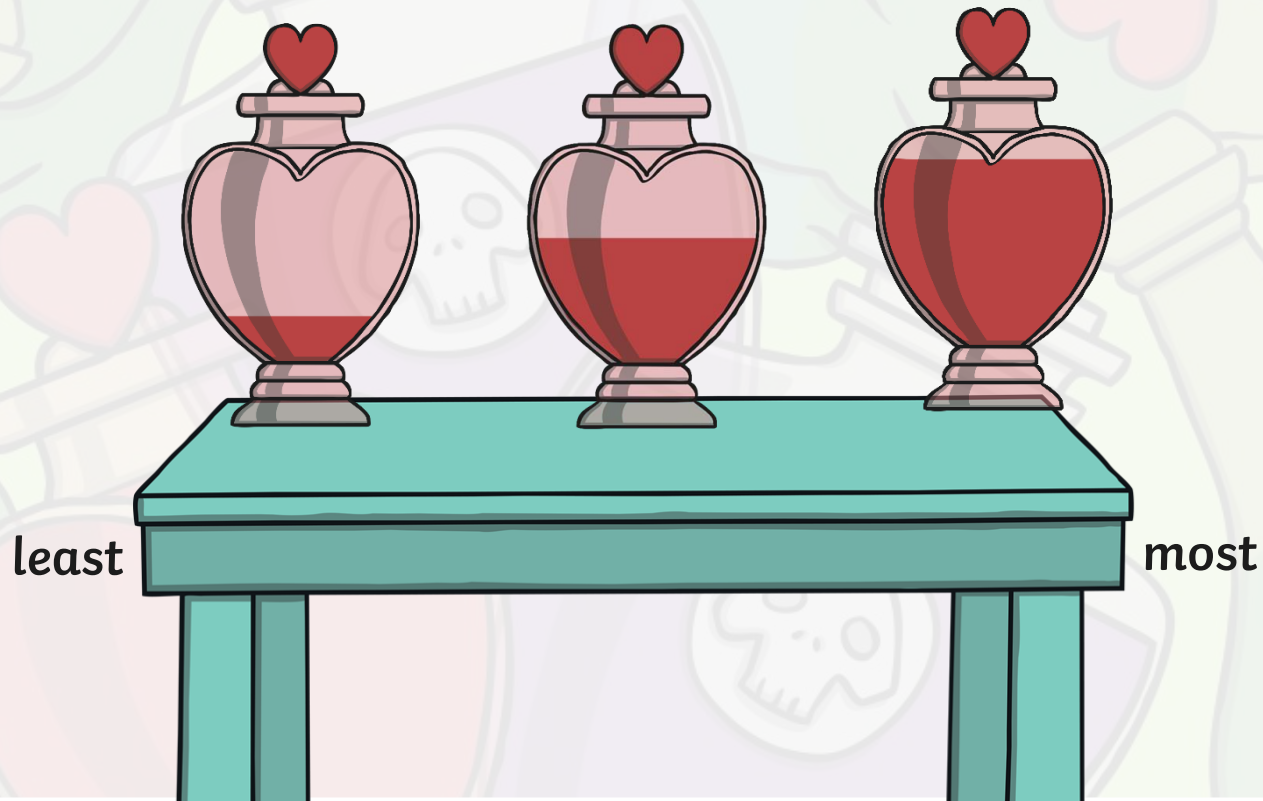
# Correct!



# Thank you!



You have ordered the potions from least full to most full.





# Choose the Container



Otti the owl, needs to choose the container that will hold the most liquid, to put his perfect potion into. Find the container that will hold the **most**.



# Correct!

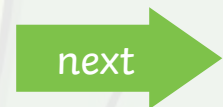
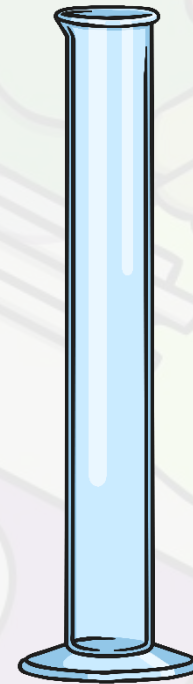


next

# Choose the Container



Otti the owl, needs to make sure he throws away the container that will hold the least amount of liquid. Find the container that will hold the least.



# Correct!





# Wizard Challenge!



Will, the Wizard, has one final challenge...

He tried filling his potion bottle by pouring in 4 test tubes, but this wasn't enough to fill it.

The next day, he started again and tried pouring in 6, but it overflowed!

How many test tubes should he use to fill up his potion bottle?

# Wizard Challenge Answer!

