

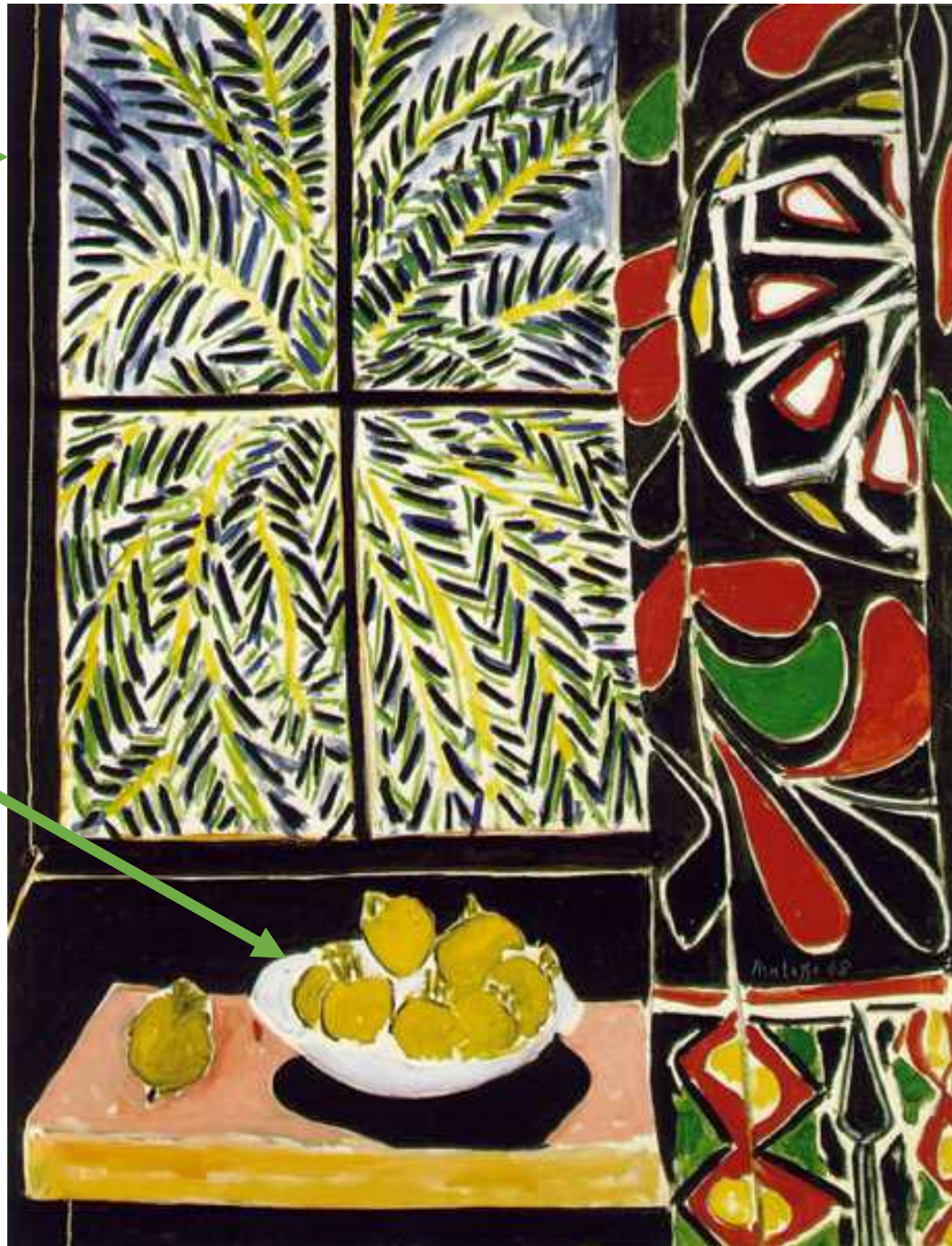
Term 6 Task 3

The background -

Matisse has painted a tree outside of his window.

The middle ground –

Matisse has painted some fruit in a bowl.



The foreground –

Matisse has painted a curtain

HENRI MATISSE (1869 –1954)
'The Egyptian Curtain',
1948 (oil on canvas)



'Red Interior: Still Life
on a Blue Table'
(1947)
by Henri Matisse.

Term 6 Task 3

Look at the still life paintings by Matisse. Traditionally, still life is the drawing and painting of items such as fruit, flowers and household objects, which are usually arranged on a table top. Matisse has split the paintings into three different sections. Look at the second painting -

The background – Matisse has used the view from the window to make the background.

The middle ground – Matisse has used the window and the yellow face.

The foreground – Matisse has used the table, vase and the fruit.

See if you can label the background, middle ground and foreground in the red painting.

Try and set up a still life arrangement using fruit, flowers or household objects. Set them up in front of a window so you can create depth to your drawing. Make sure you have a background, a middle ground and a foreground. Try and draw the view from the window.

You may want to paint/colour your drawing with bold colours inspired by Matisse.

Here are a couple of links if you would like to find out some more information about Matisse:

https://www.artfactory.com/art_appreciation/still_life/henri_matisse.htm

<https://www.tate.org.uk/kids/explore/who-is/who-henri-matisse>