

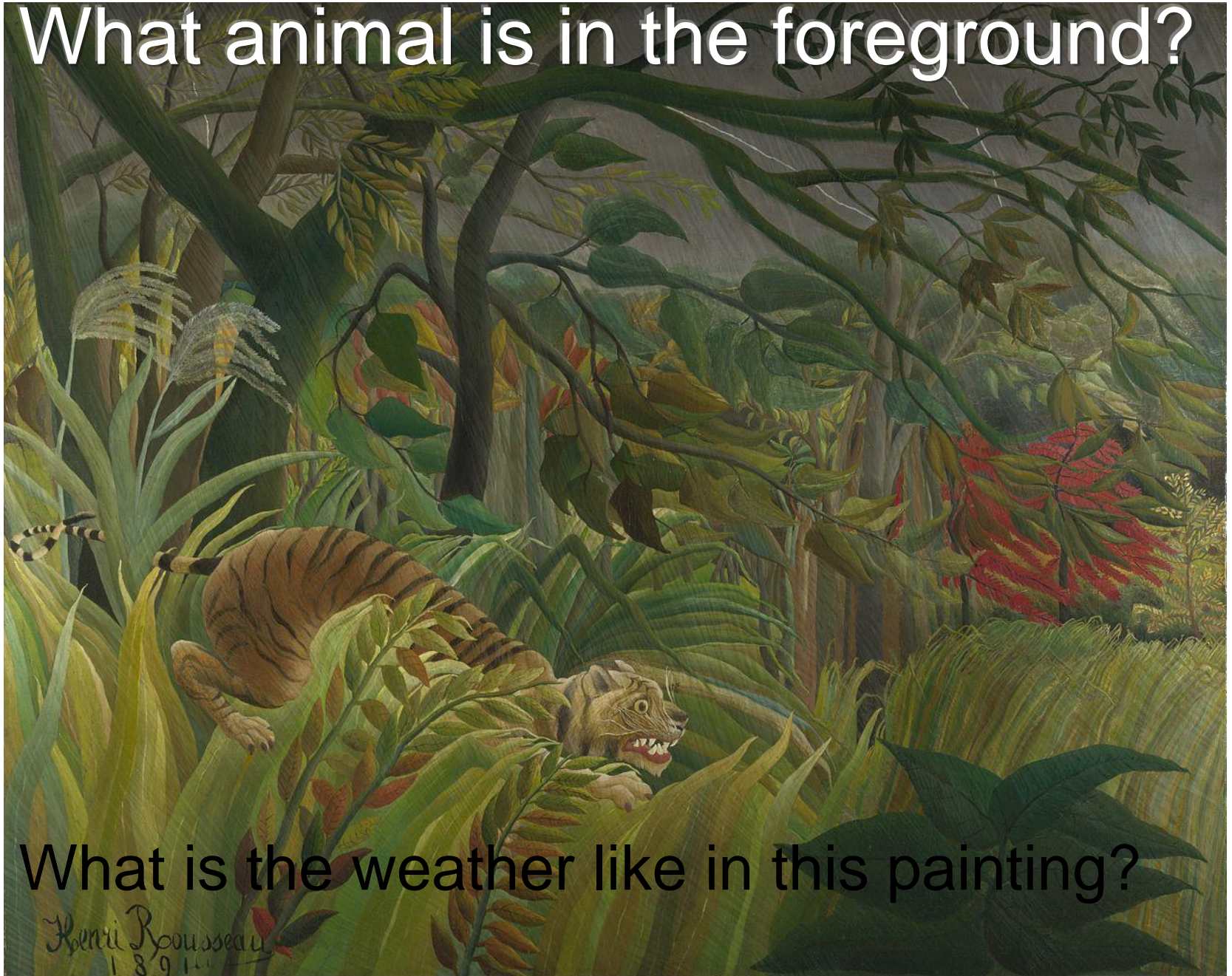
Rousseau jungles



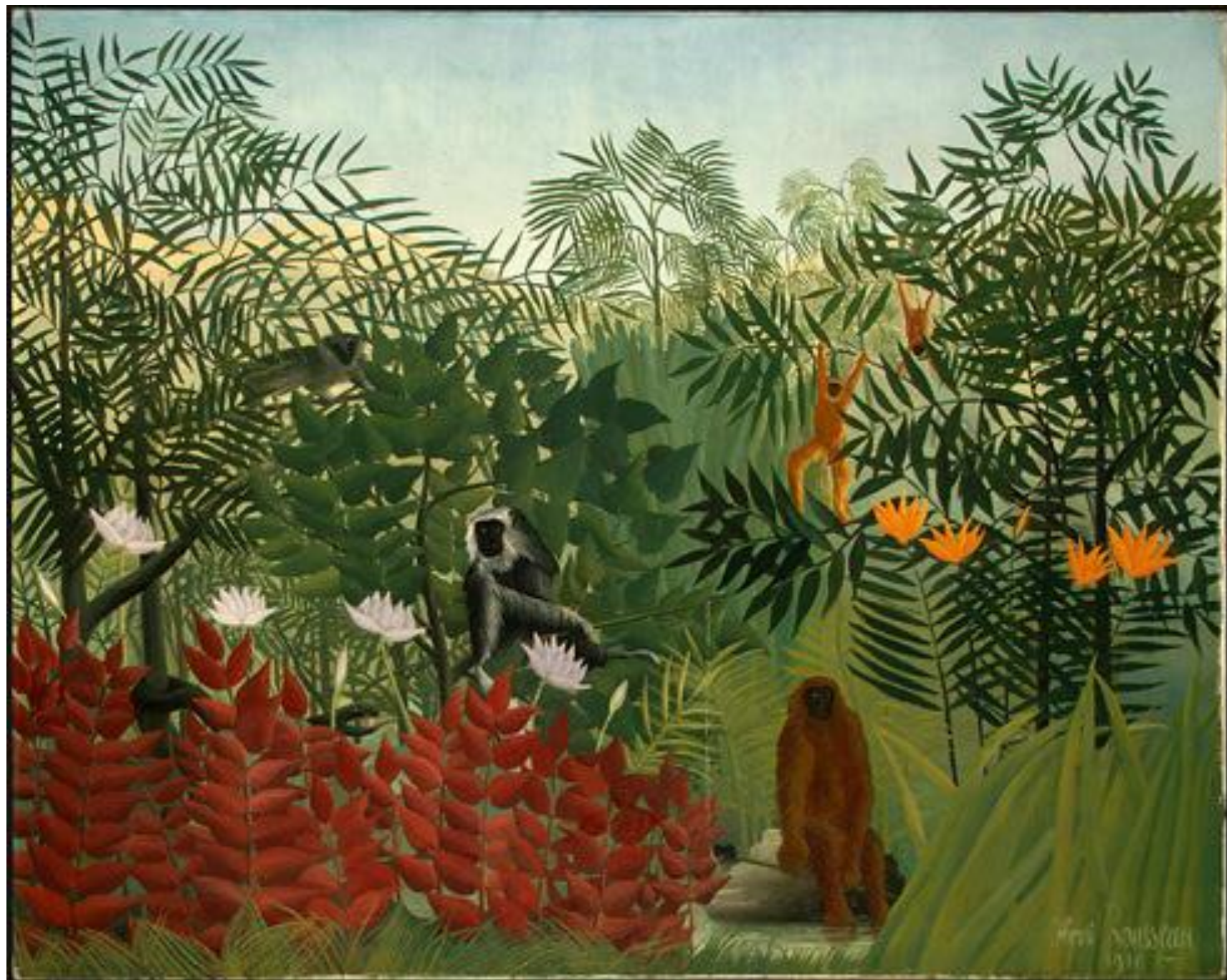
Henri Rousseau 1844-1910

- Henri Rousseau was born in France
- He never had any art lessons and started painting when he was older
- He never visited the jungle!
- He painted house plants and wild flowers for his jungle paintings and often looked at pictures in books

What animal is in the foreground?



What is the weather like in this painting?



A photograph of a lush tropical jungle. Sunlight filters through the dense canopy of various plants, including palm trees and ferns, creating a dappled light effect on the forest floor. The scene is filled with vibrant green foliage and dark, shadowed areas.

What colours can you see in
the real jungle?



Rousseau

- Clear outlines on the grass in the foreground
- Each leaf clearly painted
- What animals can you see?



Are these real jungle plants the
same height?

Rousseau jungle paintings

- He used very simple **pure colours**
- He had very **clear outlines**
- He filled jungle paintings with **animals in the foreground** and **lush green plants in the background**
- He painted **leaves and grass** piece by piece with clear **outlines**
- He often painted huge **over-sized flowers**





Rousseau

- Can you spot the giant sized blue flowers?
- What colour flowers would you paint?
- How tall would they be?

A photograph of a tropical jungle scene. In the foreground, there are large, spiky green plants. A river flows through the center of the image, reflecting the surrounding greenery. The background is filled with dense, lush trees and foliage in various shades of green. The text "Can you see light and dark in the real jungle?" is overlaid in blue at the top.

Can you see light and dark in the
real jungle?

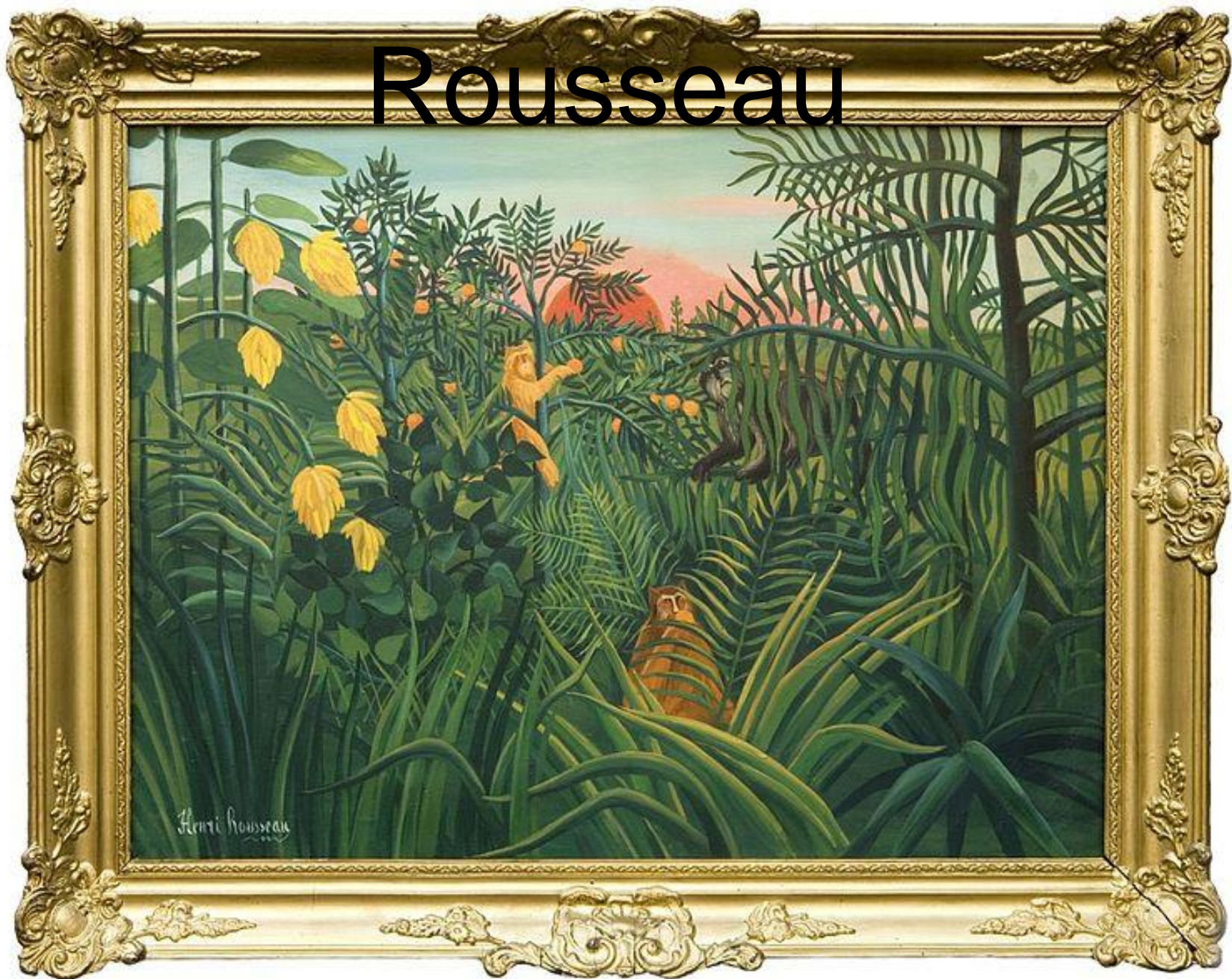
- Is it all the same shade or tint
of green?



Real jungle plants



Rousseau



Can you make a Rousseau jungle?

- Remember!!!
- He used very simple **pure colours**
- He had very **clear outlines**
- He filled jungle paintings with **animals in the foreground** and **lush green plants in the background**
- He painted **leaves** and **grass** piece by piece with clear **outlines**
- He often painted huge **over-sized flowers**

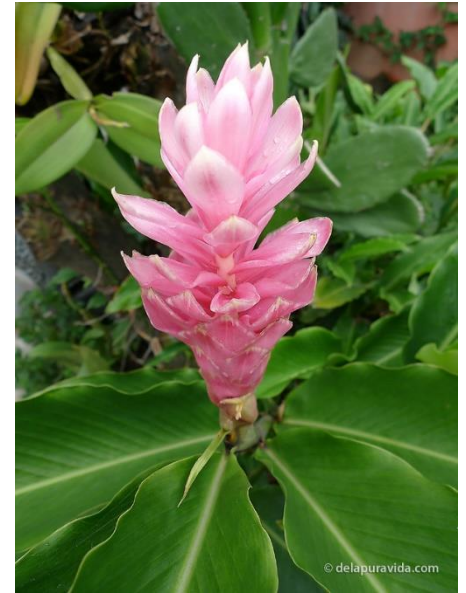
Real rainforest plants







Jungle Flowers







A 5-petal pink flower in the rainforest of Arfak mountains
photo by Charles Roring - 1 September 2011
<http://manokwaripapua.blogspot.com>

