

## Core signs for our topic this term.



Our topic this term is 'All Aboard', here are some related signs for you to practice.

train



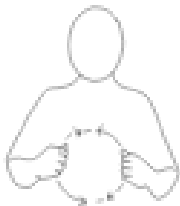
plane



bike



car



bus



travel



Don't forget to say the words as you sign!



Hazel  
Class  
Key stage 2  
Information  
for Parents/  
Carers  
Term 6  
2026

IfieldSchool

### Class Teacher and Teaching Assistants:

Helen Bradman - Class Teacher  
Demi Harber (TALL)  
Michelle Steadman (Teaching Assistant)  
Sandy Bones (Teaching Assistant)  
Nadine Baker (Teaching Assistant)  
Xanandu Sherif (Teaching Assistant)

### Regular events:

PE Enrichment this term will be visiting the parks and will be every Wednesday afternoon. Please ensure your child is appropriately dressed for the weather and provide suncream.

Swimming lessons will take place every Tuesday afternoon. Please make sure pupils bring in their swim kits for this day and label everything, including your towel.

PE will be every Monday morning.



'All Aboard'

### General Information:

Welcome back! We hope you enjoyed the half term and had a lovely break. We are looking forward to lots of activities linked to our new topic 'All Aboard'.

### Homework and contact:

Please share books with your child every day. Please support our use of PECs and/or communication boards by practicing at home as often as possible.

The Home/School Journals are in place for us both to write in so we can keep each other up to date about your child.

If you have any questions please contact the school office or speak to one of the team when dropping off or picking up.

### Ideas for home:

- Travel using different forms of transport such as a bus or train.
- Listen to videos of planes, trains and buses to build exposure to the sounds.
- Comment on the things you can see on the journeys you take every day.



<p><b>Foundations for Literacy</b></p> <p>During our Literacy focus sessions we will listen to stories in small groups about transport such as 'The Train Ride.' We will explore stories and language in a range of ways, including sensory stories, role play and singing songs. We will explore mark-making activities such as painting with wheels and write dance.</p>	<p><b>Foundations for Maths</b></p> <p>During our Maths focus sessions we will be exploring maths concepts including sorting and matching. We will also be exploring shape, space and measure through position and direction. We will be commenting on the position of objects, with staff using vocabulary such as on top of, next to, under.</p>	<p><b>Understanding the World</b></p> <p>This term we will be exploring the different ways we can see the world around us including different methods of transport. We will be investigating cause and effect, particularly with the speed of wheeled toys.</p>	<p><b>Fine Motor Skills</b></p> <p>In Hazel Class this term we will have lots of opportunities to develop our gross motor skills by developing our spatial awareness when dodging obstacles or moving around objects. We will also develop our coordination when riding bikes. We will develop our fine motor skills by developing scissor skills to cut along straight and curved lines</p>
<p><b>Art/Design</b></p> <p>We will be exploring Art by using different materials and requesting colours and materials using AAC. We will experiment by making marks with sensory materials using wheeled toys. We will also explore using junk to experiment with making marks and artwork.</p>	<p><b>Fun with Foods</b></p> <p>Foods can cause anxieties for pupil with ASD. Hazel Class will be following the 'Fun with Foods' programme to help develop your child's tolerance of different smells and textures. This term we will be working on exploring different textures and dry and wet foods.</p>	<p><b>Therapies</b></p> <p>Hazel Class will be accessing</p> <ul style="list-style-type: none"> <li>• Dough Disco</li> <li>• Fun with food</li> <li>• Therapeutic Music</li> <li>• Compressions</li> <li>• Sensory Circuits</li> <li>• SLIC support</li> <li>• OT support</li> </ul> <p>As required following observations and assessments by our therapists</p>	<p><b>PSHE (Personal, social and health education) and RSE</b></p> <p>This term Hazel Class will be learning about developing a healthier and safe lifestyle by learning to avoid obstacles. We will be developing our ability to stop an action when told and developing our road safety through role play activities.</p>
<p><b>Physical Education</b></p> <p>PE will be on Monday mornings and swimming will be on Tuesday afternoons. Pupils will continue to prepare for Sports Day by becoming familiar with key movements and target-based games they will take part in. Through practice and repetition, they will build confidence, coordination, and understanding of the activities in a supportive and enjoyable environment.</p>	<p><b>Communication/Language</b></p> <p>Personalised Speech and Language targets will be created to enable early communication. These include initiation, nursery rhymes, Curiosity Programme, EHCP targets, 1-1 interventions, and Intensive Interaction.</p>	<p><b>PE Enrichment</b></p> <p>Pupils will have PE Enrichment on Wednesday afternoons and we will be visiting local parks.</p>	<p><b>Music</b></p> <p>Pupils will continue to explore tuned and untuned percussion instruments. They will have the opportunity to explore musical elements through a variety of sensory activities.</p>