

## Core signs for our topic this term.



Our topic this term is 'All Aboard', here are some related signs for you to practice.

train



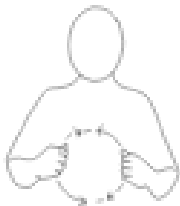
plane



bike



car



bus



travel



Don't forget to say the words as you sign!



Cherry  
Class

Key stage 2  
Information  
for Parents/  
Carers  
Term 6  
2026

IfieldSchool

### Class Teacher and Teaching Assistants:

Laura Botelho- Class Teacher  
Sophie Aldous (ITT)  
Amy Cole (TALL)  
Mark Bridle (Teaching Assistant)  
Afua Akoto (Teaching Assistant)  
Helen Jackson (Teaching Assistant)  
Tenzin Norzom (Teaching Assistant)



'All Aboard'

### Regular events:

PE Enrichment will be every Wednesday afternoon and will be cycling.

Swimming lessons will take place every Friday morning. Please make sure pupils bring in their swim kits for this day and label everything, including your towel.

PE will be every Tuesday morning.

### General Information:

Welcome back! We hope you enjoyed the half term and had a lovely break. We are looking forward to lots of activities linked to our new topic 'All Aboard'.

### Homework and contact:

Please share books with your child every day. Please support our use of PECs and/or communication boards by practicing at home as often as possible.


The Home/School Journals are in place for us both to write in so we can keep each other up to date about your child.

If you have any questions please contact the school office or speak to one of the team when dropping off or picking up.

### Ideas for home:

- Travel using different forms of transport such as a bus or train.
- Listen to videos of planes, trains and buses to build exposure to the sounds.
- Comment on the things you can see on the journeys you take every day.



<p><b>Foundations for Literacy</b></p> <p>During our Literacy focus sessions we will listen to stories in small groups about transport such as 'The Train Ride.' We will explore stories and language in a range of ways, including sensory stories, role play and singing songs. We will explore mark-making activities such as painting with wheels, write-dance and for some pupils phonics sessions where appropriate.</p>	<p><b>Foundations for Maths</b></p> <p>During our Maths focus sessions we will be exploring maths concepts including sorting and matching. We will also be exploring shape, space and measure through position and direction. We will be commenting on the position of objects, with staff using vocabulary such as on top of, next to, under.</p>	<p><b>Understanding the World</b></p> <p>This term we will be exploring the different ways we can see the world around us including different methods of transport. We will be investigating cause and effect, particularly with the speed of wheeled toys.</p>	<p><b>Fine Motor Skills</b></p> <p>In Cherry Class this term we will have lots of opportunities to develop our gross motor skills by developing our spatial awareness when dodging obstacles or moving around objects. We will develop our coordination when riding bikes and develop our fine motor skills by using scissors to cut along straight and curved lines</p>
<p><b>Art/Design</b></p> <p>We will be exploring Art by using different materials and requesting colours and materials using AAC. We will experiment with making marks with paint using wheeled toys. We will also explore using junk to experiment with making marks and artwork.</p>	<p><b>Fun with Foods</b></p> <p>Foods can cause anxieties for pupil with ASD. Cherry Class will be following the 'Fun with Foods' programme to help develop your child's tolerance of different smells and textures. This term we will be working on exploring different textures and dry and wet foods.</p>	<p><b>Therapies</b></p> <p>Cherry Class will be accessing</p> <ul style="list-style-type: none"> <li>• Cleverfingers</li> <li>• Fun with food</li> <li>• Therapeutic Music</li> <li>• Compressions</li> <li>• Sensory Circuits</li> <li>• SLIC support</li> <li>• OT support</li> </ul> <p>As required Following observations and Assessments by our therapists</p>	<p><b>PSHE (Personal, social and health education)</b></p> <p>This term Cherry Class will be learning about developing a healthier and safe lifestyle by learning to avoid obstacles. We will be developing our ability to stop an action when told and developing our road safety.</p>
<p><b>Physical Education</b></p> <p>PE will be on Tuesday mornings and swimming will be on a Friday. Pupils will continue to prepare for Sports Day by becoming familiar with key movements and target-based games they will take part in. Through practice and repetition, they will build confidence, coordination, and understanding of the activities in a supportive and enjoyable environment.</p>	<p><b>Communication/Language</b></p> <p>Personalised Speech and Language targets will be created to enable early communication. These include initiation, nursery rhymes, Curiosity Programme, EHCP targets, 1-1 interventions, and Intensive Interaction.</p>	<p><b>PE Enrichment</b></p> <p>Pupils will have PE Enrichment on Wednesday afternoons and we will be cycling</p> 	<p><b>Music</b></p> <p>Pupils will have the opportunity to continue to develop their keyboard skills and continue to learn the <i>Harry Potter</i> theme following notation. Pupils will develop their listening skills to identify and name melodic patterns.</p>