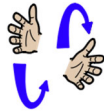


Core signs for our topic this term.



Our topic this term is 'Enchanted Woodland', here are some related signs for you to practice.

forest



insects



animals



flowers



fairy



Don't forget to say the words as you sign!



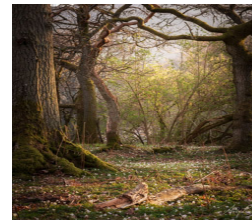
Sycamore
Class
Key Stage 2
Information
for Parents/
Carers
Term 5 2026

IfieldSchool

Class Teacher and Teaching Assistants:
Sam Davis (Teacher)
Ocean Chapman (TALL)
Kerry Maltby (TA)
Vicky Barney (TA)

Experiences/visits/visitors:

As part of this topic we will be visiting the school woodlands and local parks as part of PE enrichment.



'Enchanted Woodland'

Regular events:

PE Enrichment will take place each Thursday afternoon and we will be attending woodlands and parks in the local area.
PE will take place each Wednesday morning. Please make sure pupils bring in their PE kits for this day.

General Information:

Welcome back after half term. We are looking forward to completing lots of exciting activities linked to our new topic: 'Enchanted Woodland'.

Homework and contact:

Please read and share books with your child every day.

The Home/School Journals are in place for us both to write in so we can keep each other up to date about your children. If you have any questions please contact the school office or speak to one of the team when dropping off or picking up.

Ideas for home:

Talk to your child about what they already know about woodland areas and what they may like to see when visiting our school woodland.

Literacy and Phonics

In Literacy we will continue to develop our phonic skills through Little Wandle. Some pupils will also continue spellings using spell shed. This term we will be looking at non fiction books , researching woodlands to create non fiction writing. We will also be looking at the story 'Where the Wild Things Are' and 'The Gruffalo' linking to our topic. .



Maths

In Maths we will be continuing to develop our knowledge and practical maths skills with the use of manipulatives and apply these when engaging in white rose questions. We will be moving on to engage in forms of measure and some pupils will be developing place value up to 100 and engaging in fractions

Science

In Science pupils will continuing to develop their knowledge on animals and looking at different habitats they have and how they compare. Pupils will investigate different woodland animals



Computing

This term we will be continuing to learn about how to be safe online. We will be engaging in creating media using different forms of technology and using programmes like purple mash. We will be also are researching and finding information about different woodland animals.

Art and Design & Technology

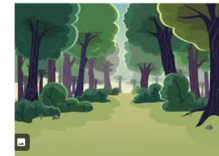
Food Technology

This term pupils will be creating their own picnic thinking about items they would like to take on a picnic. Each week we will make different items including sandwiches, scones and sausage rolls.



Geography

In Geography we be engaging in simple fieldwork and observational skills to study the geography of our school and the school woodlands and the key human and physical features of its surrounding environment.



PSHE (Personal, social and health education) and RSE

This term we will be looking at our mental and physical health and what we can do to support this. We will be developing the ability to define mental and physical health and all the things we can do to look after ourselves and others

Physical Education

This term Sycamore Class will explore a range of activities focused on athletic performance, including running, throwing, and jumping. They will also have the opportunity to design and develop their own fun games and challenges, helping to prepare exciting ideas for Sports Day.

Religious Education

This term in RE we will be learning about people who are special to us, whom we admire. We will discuss what makes these people special and identify some of the qualities of a good friend.



PE Enrichment

The pupils will have PE Enrichment on Thursday afternoons. This term we will be engaging in Parks walking and visiting different parks like Shorne country park



Music

In Music pupils will have the opportunity to develop their keyboard skills and learn the Harry Potter theme following notation. Pupils will develop their listening skills to identify and name melodic patterns.

