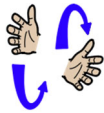


Core signs for our topic this term.



Our topic this term is 'Enchanted Woodland', here are some related signs for you to practice.

forest



insects



animals



flowers



fairy



Don't forget to say the words as you sign!



Oak Class
Key stage 2
Information
for Parents/
Carers
Term 5
2025-2026

lfieldSchool

Class Teacher and Teaching Assistants:

Jayne Field (Class teacher)
Demi Harber (Teaching Assistant)
Lavinia Les (Teaching Assistant)
Libby Banks (TALL)
Ola Awotunde (Teaching Assistant)
Kylie Denham (MDS)

Regular events:

PE Enrichment will be every be Tuesday afternoon, we will be cycling, using a range of bikes.

Swimming takes place every Friday Morning. Please bring named kit.

PE will be every Monday morning. Please bring named kit.



'Enchanted Woodland'

General Information:

Welcome back! We hope you and had a lovely Easter. We are looking forward to lots of activities linked to our new topic 'Enchanted Woodland'.

Homework and contact:

Please share books with your child every day. Please support our use of PECs and/or communication boards by practicing at home as often as possible.

The Home/School Journals are in place for us both to write in so we can keep each other up to date about your child.

If you have any questions please contact the school office or speak to one of the team when dropping off or picking up.

Ideas for home:

- Visit a local woods.
- Explore bark, wood and leaves
- See if you can find some mini-beasts.
- Create a mini beast house or bird feeder.



Foundations for Literacy

During our Literacy focus sessions we will listen to stories about woodlands and creatures such as 'The Gruffalo'. We will go on a woodland walk to hear woodland sounds and play hide and seek in the forest. We will explore lots of mark-making in many different forms. We will use lots of visuals to help us communicate and will read stories with an adult to support our understanding of different texts.

Foundations for Maths:

During our maths focus sessions we will be exploring maths concepts including number and counting numbers in everyday contexts. We will measure, compare size, length and weight and sort objects such as leaves and sticks into groups.



Understanding the World

This term we will be exploring 'Enchanted Woodlands'. We will identify simple properties of trees and forests and the animals that live there. We will be using our senses to explore that we can see, hear and smell in a forest/wood.

Fine Motor Skills

Oak Class will have lots of opportunities this term to develop our gross motor skills by developing stamina when going on longer walks and climbing obstacles in the woods. We will also develop our fine motor skills by developing hand/eye co-ordination by picking up and manipulating small natural objects.

Art/Design

We will be exploring art by using different materials, requesting colours and materials using symbols and communication boards. We will experiment with leaf and bark rubbings and using natural materials to build bug houses.



Fun with Foods

Foods can cause anxieties for pupil with ASD. Oak Class will be following the Fun with Foods programme to help develop your child's tolerance of different smells and textures.

This term we will be working on dry, crispy and sticky foods trying to introduce a range of textures.

Therapies

Oak Class will be accessing

- Cleverfingers
- Fun with food
- Gong Therapy
- Therapeutic Music
- Brushing
- Compressions
- Sensory Circuits
- SLIC support
- OT support

As required Following observations and Assessments by our therapists

PSHE (Personal, social and health education) and RSE

This term Oak Class will be learning about keeping safe in different environments. We will learn about what is safe/not safe to eat or put in our mouths and make choices at snack time.

Physical Education

Pupils will prepare for Sports Day by becoming familiar with key movements and target based games. Through practice and repetition, they will build confidence, coordination, and understanding of the activities in a supportive and enjoyable environment. Swimming will be on Fridays and our focus will be developing independence in the pool, floating safely on our backs putting our faces in the water.

Communication/Language

Personalised Speech and Language targets will be created to enable early communication. These include initiation, nursery rhymes, EHCP targets, 1-1 interventions, and Intensive Interaction.

PE Enrichment

Pupils will have PE Enrichment on Tuesday afternoons. Oak Class will be using various bikes.



Music

Pupils will create their own sound sequences using garage band, switches and sounds related to Enchanted Woodland. They will have opportunities to match sounds to symbols and explore electronic instruments.