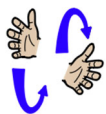


Core signs for our topic this term.



Our topic this term is 'Enchanted Woodland', here are some related signs for you to practice.

forest



insects



animals



flowers



fairy



Don't forget to say the words as you sign!



Maple Class
Key stage 2
Information
for Parents/
Carers
Term 5
2026

lfieldSchool

Class Teacher and Teaching Assistants:
Leanne Crawford-Woods (Teacher)
Megan Morris (TALL)
Kerry Bux (Teaching Assistant)
Fathima Yoofoof (Teaching Assistant)
Precious Ehigie (Teaching Assistant)
Marie James (MDS)

Experiences/visits/visitors:

WC: 27.04.26 - Arts Week.

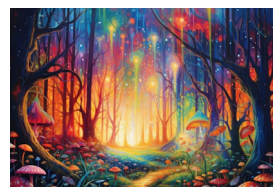
Regular Events:

Wednesday: Swimming. Please remember swimming kits.

Wednesday: PE Enrichment - Rebound and Trampolining.

Thursday: PE - Please remember PE kits.

Please remember to label all of your child's belongings.



'Enchanted Woodland'

General Information:

Welcome back! We hope you enjoyed the Easter holiday with your family. We are looking forward to lots of activities linked to our new topic 'Enchanted woodland', as well as our exciting Arts Week!

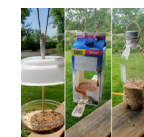
Homework and contact:

Please share books with your child every day. Please support our use of PECs and/or communication boards by practicing at home as often as possible.

The Home/School Journals are in place for us both to write in so we can keep each other up to date about your child.

Ideas for home:

- Visit a local park or woodlands.
- Explore natural objects, such as: bark, wood and leaves.
- Create a minibeast house or bird feeder.
- What can you see? Hear? Smell? Touch? Use descriptive words.



<p>Foundations for Literacy</p> <p>During our Literacy focus sessions we will listen to stories about woodlands and creatures such as 'The Gruffalo'. We will go on a woodland walk to hear woodland sounds and play hide and seek in the forest. We will explore lots of mark-making in many different forms. We will use lots of visuals to help us communicate and will read stories with an adult to support our understanding of different texts.</p>	<p>Foundations for Maths</p> <p>During our maths focus sessions we will be exploring maths concepts including number and counting numbers in everyday contexts. We will measure, compare size, length and weight and sort objects such as leaves and sticks into groups.</p>	<p>Understanding the World</p> <p>This term we will be exploring 'Enchanted Woodlands'. We will identify simple properties of trees and forests and the animals that live there. We will be using our senses to explore that we can see, hear and smell in a forest/wood.</p>	<p>Fine Motor Skills</p> <p>We will be developing our fine motor skills by focussing on hand/eye co-ordination by picking up and manipulating small natural objects.</p> <p>We will also work on our individual fine motor targets.</p>
<p>Art/Design</p> <p>We will be exploring art by using different materials, requesting colours and materials using communication boards and symbols.</p> <p>We will experiment with leaf and bark rubbings and using natural materials to build bug houses.</p>	<p>Life Skills</p> <p>We will be continuing to develop our personal targets linked to:</p> <ul style="list-style-type: none"> • Communication • Turn-taking • Exploring food • Toileting • Tidying up • Looking after our resources 	<p>Therapies</p> <p>We will be accessing:</p> <ul style="list-style-type: none"> • Fine motor packs • Write from the Start • Therapeutic Music • Brushing • Joint compressions • Sensory Circuits • SLIC and OT support <p>These will be personalised following observations and assessments by our therapists.</p>	<p>PSHE and RSE</p> <p>We will be learning about keeping ourselves safe in different environments, for example: What is safe/not safe to eat or put in our mouth? We will also be focussing on developing our skills and understanding for hand washing. We will explore how to brush our hair and teeth effectively.</p>
<p>Physical Education</p> <p>Pupils will begin preparing for Sports Day by becoming familiar with key movements and target-based games they will take part in. Through practice and repetition, they will build confidence, coordination, and understanding of the activities in a supportive and enjoyable environment.</p>	<p>Communication/Language</p> <p>We will continue our personalised Speech and Language targets to develop our communication skills. We will also be developing this through play and interaction with peers and adults, including turn-taking opportunities.</p>	<p>PE Enrichment</p> <p>This term pupils will have the opportunity for Rebound Therapy and trampolining on Wednesday afternoons.</p>	<p>Music</p> <p>Pupils will have the opportunity to develop their instrumental skills and learn the Harry Potter theme following notation. Pupils will develop their listening skills to identify and name melodic patterns.</p>