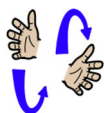


Core signs for our topic this term.



Our topic this term is '
Here are some related signs for you to practice.

Aeroplane



Food



Fruit



vegetables



Don't forget to say the words as you sign!



Dove Class Information Booklet

Term 5
April/May
2026



Class Teacher and TAs

Lauren Cambridge (Teacher Tuesday to Friday)
Fiona Turley (TALL)
Rachel Hayden (TA)
Harpreet Pelia (TA)



Regular events:

Monday: PE
Thursday: PE Enrichment
Friday: Art Award

General Information

We hope you had a restful Easter break and are all looking forward to an exciting term ahead. We have now established our routine and we work from our regular timetable on a weekly basis, unless there are any special events. This term, students will be exploring 'Food Journeys.'

Homework and Contact

Thank you for using the Home/School Journals. The comments we receive are really helpful and highlight how a pupil may require extra support during the day. Please do let us know if you have any concerns.
Please read/ share a book with your child at home every night. Please ensure that your child has the appropriate named clothing for activities we are carrying out, such as: PE kit/wellies/ coats and jumpers.

Maths

This term students will be focusing on recognising the properties and names of 2d and 3d shapes. Pupils will be making sure they can recognise money and will be applying their knowledge to solve simple addition and subtraction calculations relating to finding totals and giving change. They will be focusing on the vocabulary relating to maths.

English

This term students will be focusing on different fiction and non-fiction texts linked with food.

Students will be looking at how they can develop and use their filmmaking skills when working on challenges linked to foods.

Students will also be developing their skills of how to use capital letters, full stops, question marks and exclamation marks. They will also be working on spelling rules.

Students will continue to take part in guided reading sessions where they will have the opportunity to discuss texts and develop their comprehension skills.

Employability

This term students will focus on pre-employability skills and work place rules. They will continue to develop their outside areas and to take on more responsibility within the school.



RE

In R.E. Students will be exploring why people pray. They will be discussing questions such as:
Which places are special and why?
What makes some places sacred?
If God is everywhere, why go to a place of worship?
How do people pray?

PSHE

This term the focus will be on wellbeing and developing coping strategies when things do not go as planned or if we are not feeling our best. We will also continue the content from last term.

Digital Skills

This term students will be:

- Identifying icons and their meanings.
- Finding items for a specific purpose online, linked to food.
- Identifying how to access Wi-Fi and troubleshoot problems.
- Creating a document linked to food, with specific criteria to follow. Internet safety will also continue to be discussed.

Preparation for Adulthood

This term students will be learning about money, what to spend it on and how to use their money wisely.

They will also think about banking and learn how to read a bank statement.



Physical Education:

Pupils will explore a range of activities focused on athletic performance, including running, throwing, and jumping. They will also have the opportunity to design and develop their own fun games and challenges, helping to prepare exciting ideas for Sports Day.

This term we will take part in Arts Week. We will explore art and culture from Brazil.



PE Enrichment

PE Enrichment will be every Thursday afternoon.

This term students will be participating in a chosen area of learning. They have chosen one of the following activities: invasion games, target games, striking and racket games or social skills.

