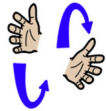


Core signs for our topic this term.



Our topic this term is 'Enchanted Woodland', here are some related signs for you to practice.

forest



animal



insects



Wiggling fingers show movement

fairy



Relaxed open hands flap near shoulders

Don't forget to say the words as you sign!



Chestnut
Class
Key stage 2
Information
for Parents/
Carers
Term 5 2026

IfieldSchool

Class Teacher and Teaching Assistants:

- Jean Duncan (Teacher)
- Megan Withington (Teacher)
- Elizabeth Shaw (Teaching Assistant)
- Janie Rumley (TALL)
- Sarah Adams (Teaching Assistant)
- Savannah Cooper (Teaching Assistant)
- Somina Begum (Teaching Assistant)
- Vicki Stanford (Teaching Assistant)



'Enchanted Woodland'

Regular events:

PE Enrichment will be every Tuesday afternoon and will be a visit to Monkey Bizz.

Swimming will take place every Wednesday afternoon. Please make sure pupils bring in their swim kits and swim pads for this day and label everything.

Pupils will be visiting the woodlands every Monday afternoon.

General Information:

Welcome back! We hope you enjoyed the half term and had a lovely Easter. We are looking forward to lots of activities linked to our new topic 'Enchanted Woodland'.

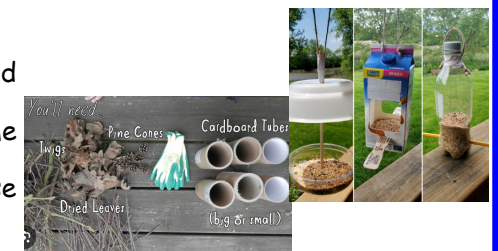
Homework and contact:

Please share books with your child every day. Please support our use of PECs and/or communication boards by practicing at home as often as possible.

The Home/School Journals are in place for us both to write in so we can keep each other up to date about your child. If you have any questions please contact the school office or speak to one of the team when dropping off or picking up.

Ideas for home:

- Visit a local woods.
- Explore bark, wood and leaves.
- See if you can find some minibeast.
- Create a minibeast house or bird feeder.



| | | | |
|--|---|---|--|
| <p>Foundations for Literacy</p> <p>During our Literacy focus sessions we will listen to stories about woodlands and creatures such as 'The Gruffalo'. We will go on a woodland walk to hear woodland sounds and play hide and seek in the forest. We will explore lots of mark-making in many different forms. We will use lots of visuals to help us communicate and will read stories with an adult to support our understanding of the woodland.</p> | <p>Foundations for Maths</p> <p>During our Maths focus sessions we will be exploring maths concepts including number and counting numbers in everyday contexts. We will measure different objects, comparing size, length and weight and sort objects into groups e.g. leaves and sticks.</p> | <p>Understanding the World</p> <p>This term we will be exploring Enchanted Woodlands. We will identify simple properties of trees and forests and the animals that live there. We will be using our senses to explore what we can see, hear and smell in a forest/wood.</p> | <p>Fine Motor Skills</p> <p>In Chestnut Class this term we will have lots of opportunities to develop our gross motor skills by developing stamina when going on longer walks and climbing obstacles in the woods. We will develop our fine motor skills by developing hand/eye co-ordination by picking up and manipulating small natural objects.</p> |
| <p>Art/Design</p> <p>We will be exploring Art by using different materials and requesting colours and materials using AAC. We will experiment with leaf and bark rubbings and using natural materials to build bug houses.</p> | <p>Fun With Foods</p> <p>Foods can cause anxieties for pupil with ASD. Chestnut Class will be following the 'Fun with Foods' programme to help develop your child's tolerance of different smells and textures.</p> <p>This term we will be working on dry, crispy and sticky foods trying to introduce a range of new textures.</p> | <p>Therapies</p> <p>Chestnut Class will be accessing</p> <ul style="list-style-type: none"> • Cleverfingers • Fun with food • Gong Therapy • Therapeutic Music • Brushing • Compressions • Sensory Circuits • SLIC support • OT support <p>As required Following observations and Assessments by our therapists</p> | <p>PSHE (Personal, social and health education) and RSE</p> <p>This term Chestnut Class will be learning about keeping safe in different environments. We will learn what is safe/not safe to eat or put in our mouth and make choices at snack time.</p> |
| <p>Physical Education</p> <p>PE will be on Wednesday mornings this term and swimming will be Wednesday afternoons. Our focus will be continuing water confidence, developing independence in the pool, floating safely on our backs like a log and putting our faces in the water. We will also be jumping in the pool like a frog!</p> | <p>Communication/Language</p> <p>Personalised Speech and Language targets will be created to enable early communication. These include initiation, nursery rhymes, Curiosity Programme, EHCP targets, 1-1 interventions, and Intensive Interaction.</p> | <p>PE Enrichment</p> <p>Pupils will have PE Enrichment on Tuesday afternoons and we will be going to Monkey Bizz. We will also be visiting the school woodlands on a Monday afternoon.</p> | <p>Music</p> <p>Chestnut Class will create their own sound sequences using garage band, switches and sounds related to Enchanted Woodland. They will have opportunities to match sounds to symbols and explore electronic instruments.</p> |