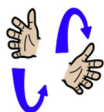


Core signs for our topic this term.



Our topic this term is 'Enchanted Woodland', here are some related signs for you to practice.

forest



insects



animals



flowers



fairy



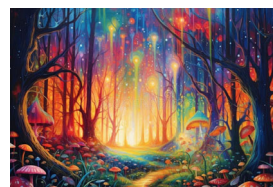
Don't forget to say the words as you sign!



Cherry Class Key stage 2 Information for Parents/ Carers Term 5 2026

IfieldSchool

Class Teacher and Teaching Assistants:
 Laura Botelho (Class teacher)
 Amy Cole (TALL)
 Afua Akoto (Teaching Assistant)
 Helen Jackson (Teaching Assistant)
 Kellie Halliday-Clark (Teaching Assistant)
 Mark Bridle (Teaching Assistant)
 Tenzin Norzom (Teaching Assistant)



'Enchanted Woodland'

Regular events:

PE Enrichment will be every Wednesday afternoon and we will be visiting local parks or Ifield Woods.

Swimming takes place every Friday Morning. Please bring a named kit in on that day.

PE every Tuesday morning. Please bring a named kit in on that day.

General Information:

Welcome back! We hope you enjoyed the half term and had a lovely Easter. We are looking forward to lots of activities linked to our new topic 'Enchanted Woodland'.

Homework and contact:

Please share books with your child every day. Please support our use of PECs and/or communication boards by practicing at home as often as possible.

The Home/School Journals are in place for us both to write in so we can keep each other up to date about your child.

If you have any questions please contact the school office or speak to one of the team when dropping off or picking up.

Ideas for home:

- Visit a local woods.
- Explore bark, wood and leaves
- See if you can find some mini-beasts.
- Create a mini beast house or bird feeder.



Foundations for Literacy

During our Literacy focus sessions we will listen to stories about woodlands and creatures such as 'The Gruffalo'. We will go on a woodland walk to hear woodland sounds and play hide and seek in the forest. We will explore lots of mark-making in many different forms. We will use lots of visuals to help us communicate and will read stories with an adult to support our understanding of different texts.

Foundations for Maths

During our maths focus sessions we will be exploring maths concepts including number and counting numbers in everyday contexts. We will measure, compare size, length and weight and sort objects such as leaves and sticks into groups.

Understanding the World

This term we will be exploring 'Enchanted Woodlands'. We will identify simple properties of trees and forests and the animals that live there. We will be using our senses to explore that we can see, hear and smell in a forest/wood.

Fine Motor Skills

Cherry Class will have lots of opportunities this term to develop our gross motor skills by developing stamina when going on longer walks and climbing obstacles in the woods. We will also develop our fine motor skills by developing hand/eye co-ordination by picking up and manipulating small natural objects.

Art/Design

We will be exploring art by using different materials, requesting colours and materials using AAC. We will experiment with leaf and bark rubbings and using natural materials to build bug houses.

Fun with Foods

Foods can cause anxieties for pupil with ASD. Cherry Class will be following the Fun with foods programme to help develop your child's tolerance of different smells and textures.

This term we will be working on dry, crispy and sticky foods trying to introduce a range of textures.

Therapies

Cherry Class will be accessing

- Cleverfingers
- Fun with food
- Therapeutic Music
- Brushing
- Compressions
- Sensory Circuits
- SLIC support
- OT support

As required Following observations and Assessments by our therapists

PSHE (Personal, social and health education) and RSE

This term Cherry Class will be learning about keeping safe in different environments. We will learn about what is safe/not safe to eat or put in our mouths and make choices at snack time.

Physical Education

PE will be on Tuesday mornings this term. Pupils will begin preparing for Sports Day by becoming familiar with key movements and target-based games they will take part in. Through practice and repetition, they will build confidence, coordination, and understanding of the activities in a supportive and enjoyable environment. Swimming will be on Friday mornings.

Communication/Language

Personalised Speech and Language targets will be created to enable early communication. These include initiation, nursery rhymes, EHCP targets, 1-1 interventions, and Intensive Interaction.

PE Enrichment

The pupils will have PE Enrichment on Tuesday afternoons. This term it will be Local Parks.



Music

Cherry Class will have the opportunity to develop their instrumental skills and learn the *Harry Potter* theme following notation. Pupils will develop their listening skills to identify and name melodic patterns.