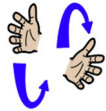


Core signs for our topic this term.



Our topic this term is 'Ready Steady Grow!', here are some related signs for you to practice.

grow



water



smell



Sniff and tap nose once

taste



Index finger touches bottom lip once

yummy



Facial expression important

Don't forget to say the words as you sign!



Beech Class
Key stage 1
Information
for Parents/
Carers
Term 5 2026

IfieldSchool

Class Teacher and Teaching Assistants:

Nicole Bartholomew (UQT)

Aimee Evans

Ebony Toulson (TALL)

Kate Tucker

Nicky Wallington

Olayinka Oguntade



This term our focus will be:

'Ready, Steady, Grow'



Regular events:

Swimming will take place every Monday, so please ensure your child brings their swim kit on this day.

Physical Development is part of our daily routine, with a focused session each Friday.

This term, we will also be visiting Meapa Gym every Wednesday morning as part of our PE enrichment programme

General Information:

Welcome back! We hope you had a lovely Easter. We are looking forward to completing lots of activities linked to our new topic, *Ready, Steady, Grow*. We will be learning about different plants, fruits and vegetables and how they grow, and we will be using all our senses to explore different tastes, textures and smells. As the weather is becoming warmer, please ensure your child comes to school with a hat and has sun cream applied.

Homework and contact:

Please continue to share books with your child every day, as this is a wonderful way to support their learning and development.

Our Home-School Journals are a key way for us to communicate with each other. Please feel free to write in them so we can keep up to date with how your child is doing both at home and at school.

Ideas for home:

Please continue to share the fun you have at home and the toys and games your children like play with.

Foundations for Literacy

During our Literacy focus we will share sensory stories and touch and feel books like 'That's not my Duck'.

We will be looking at familiar nursery rhymes and action songs. Our focus book this term is

'Busy Grow' by Campbell Busy Books.



Foundations for Maths

During our Maths focus sessions we will be looking at number rhymes and counting in the environment.

We will look at big and small by building tall towers and knocking them down.

We will also be looking at big and small plants, fruits and vegetables.

Understanding the World

This term Beech Class will be using all of their senses to explore different fruits, vegetables and plants. We will be searching for hidden objects in treasure boxes.



Fine Motor Skills

In Beech Class we will be developing our fine and gross motor skills by exploring our classroom veggie patch. Pupils will have the opportunity to enhance their motor skills using mini rakes and spades to dig. We will also have some hidden things to pull out of the mud! Beech Class will have some practical experience of chopping fruit and vegetables.

Art/Design

This term we will be using different fruits and vegetables to be creative. We will be creating our own flower petal art and vegetable printing. Beech Class will be growing our own crazy cress hair which we will be able to bring home to share with our loved ones. We will be exploring different textures and smells from the garden.

Continuous Provision

We will continue to encourage pupils to be active learners through engaging and interactive sensory experiences, enhancing learning and providing pupils with the opportunities to challenge themselves.

Therapies

Beech Class will be accessing

- Therapeutic Music
- Brushing
- Compressions
- Sensory Circuits
- SLIC support
- OT support

As required following observations and Assessments by our therapists

PSHE (Personal, social and health education) and RSE

Beech Class will be using watering cans to water our cress plants. We will continue to build on positive relationships and interactions with all members of staff and our peers. We will be building on peer relationships and using kind hands to each other.

Physical Education

PE will be on a Friday this term Swimming will be on a Monday (unless otherwise advised). We will begin preparing for Sports Day by becoming familiar with key movements and target-based games they will take part in. Through practice and repetition, they will build confidence, coordination, and understanding of the activities in a supportive and enjoyable environment.

Communication/Language

Personalised Speech and Language targets will be created to enable early communication. These include initiation, nursery rhymes, Curiosity Programme, Attention Autism, EHCP targets, 1-1 interventions, and Intensive Interaction.

PE Enrichment

Pupils will have PE Enrichment on a Wednesday morning.

This term Beech Class are really lucky to have access to Meapa gym.



Music

Beech Class will continue to develop their musical skills through exploring percussion instruments, and a variety of tuned instruments. Pupils will be encouraged to explore at their own pace and create their own melodies.