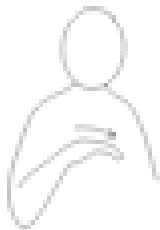


Core signs for our topic this term.

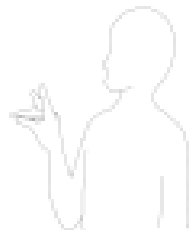


Our topic this term is 'Animal Homes'
Here are some related signs for you to practice.

Home / habitat



animal



life



diet



Don't forget to say the words as you sign!



Sparrow Class

Information for
parents

Term 4
Sparrow 2025

IfieldSchool

Class Teacher and Tas

Ruth Fahey (Class teacher)
Hannah Morris (TA)
Katherine Rodgers (TA)
Rob Kemp (TA)



Regular events:

Tuesday: Music and PE (am)

Thursday: PE Enrichment

Visits: Pets at home and a farm

Curriculum information

This term our topic is 'Animal homes.' We will be exploring this topic in different ways, throughout the various subjects, including Science and DT where we will design and make an animal home. Students will work to improve their writing using a range of punctuation.

Ideas for home

If you'd like to support your child at home, please discuss Animal homes and if you have ever or still do have any animals. Discuss with your child what they eat, drink and what their homes look like.

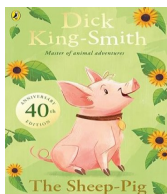
General Information

Please continue to use the Home/School Journals to liaise with us and let us know if you have any questions. Please ensure that your child has the appropriate clothing for activities we are doing this year such as PE and PE enrichment. Please make sure all of their belongings are named.

English:

In English we will be continuing to focus on adding punctuation to our written work as well as improving our handwriting. As well as this we will be trying to be as independent as possible by using word banks and checklists when writing with minimal support from the adults in our class.

This term in English, we will be focusing on story writing including writing alternative endings. We will also write using adjectives when creating a character description. We will invent a home for an animal and write a short description of what it is like and why it is special. This means we will be looking at book *The Sheep pig* by Dick King Smith and the non-fiction text *Amazing animal homes* by Chris Packham.



Maths:

In Maths, some students will be learning about place value and length. Some will be looking at money and Multiplication. We will be using the White Rose resources to support the pupils to answer word problems linked to these strands of Maths. We will also use a range of manipulatives including Base 10 and Numicon and number lines.



Science:

In Science students will learn about Living things and their habitats. They will look at what a range of animals eat and drink and what their homes look like across a range of continents.



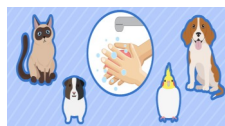
DT:

In DT the students will design and create their own model homes for animals. These may include Bug hotels and small animal homes. We will visit 'Pets at home' to see what some animals need to thrive and be stimulated.



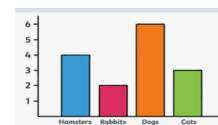
Lifeskills:

This term pupils will continue to keep our classroom tidy including sweeping and using a dust pan and brush. We will also look at hygiene when around animals.



Computing:

The students will explore Data and Information. They will learn about Emails. They will also collect data using tally charts and use them to create a range of graphs. They will also explore creating tables and spreadsheets.



PSHE (Personal, social and health education) and RSE:

This term students will be learning about showing understanding of right and wrong behaviours. They will be able to name some rules and who may enforce rules. They will begin to understand the terms honest and dishonest.

Physical Education:

This term, pupils will take part in Rebound Therapy and trampolining sessions. They will practise balance, coordination, and core strength through structured activities on the trampoline, following individual programmes tailored to their needs. These sessions will also help to build confidence, body awareness, and communication skills while encouraging enjoyment of movement.

Religious Education:

In RE this term students will look at Christianity. It will focus on who are Christians and what do they believe?



Geography

In Geography we will be exploring Fieldwork and mapping skills. This will include learning about Grid references. They will also recap their directions knowledge from last term to support them when looking at local area maps.



Music

Pupils will continue to develop their instrumental skills to play melodies on the keyboard linked to 'The Big Reveal's' Intergalactic Emergency project; they will develop their musical skills to perform from pitched and rhythmic notation.

