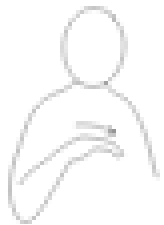


Core signs for our topic this term.

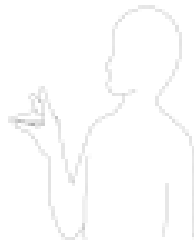


Our topic this term is 'Animal Home's'
Here are some related signs for you to practice.

Home / habitat



animal



life



diet



Don't forget to say the words as you sign!



Robin Class

Information for
parents

Term 4
Robin 2026

IfieldSchool

Class Teacher and TA's

Clare Ayley (Class Teacher/ITT)
Hannah Dyne (Class Teacher)
Jamie Styles (TA)
Lucy Gladding (TA)
Sophie Bayley (TA)



Regular events:

Monday: Swimming PM

Tuesday: PE

Wednesday: Violin Lessons

Thursday: Music, PE Enrichment

Curriculum information

This term, our topic is "Animal Homes." We will explore this theme in a variety of ways across different subjects,

Ideas for home

We would encourage you to read with your child at home when possible. We will be able to provide a selection of books and a reading record to accompany this.

General Information

Please continue to use the Home/School Journals to liaise with us and we welcome any questions you may have. Please ensure that your child has the appropriate named clothing for activities we are doing this year such as PE enrichment. PE Kit can be worn to school on a Tuesday. If your child would like to have a snack at playtime, please can this be sent in their school bag.

English

We will be reading the following Fiction and Non fiction texts in English this term, in line with our topic 'Animal Homes':

The Sheep Pig by Dick King-Smith

Amazing Animal Homes by Chris Packham

By consolidating our knowledge of skills gained this year in our SPAG sessions, we aim to develop our creative writing skills.

We will also learning key skills required to write persuasively and formally.

Lastly we will be applying the subject knowledge gained from our non fiction text to create fact files about animals and their habitats.

Maths

As part of our White Rose Maths programme, students will be learning about time, position and direction, and shapes. Pupils will also continue working on place value, as well as addition and subtraction with larger numbers.

White Rose
MATHS



Music

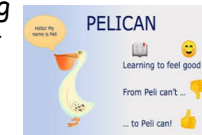
Pupils will continue to develop their instrumental skills to play or sing a range of melodies linked to 'The Big Reveal's' Intergalactic Emergency project; they will develop their performance skills to perform within a local theatre with increasing confidence.

Art / DT

Applying our topic focus, Animal Homes, we will be creating our own model versions in DT. We will plan and design our own habitats as well as helping to source the materials needed to make our finished product. If you have any recyclable materials that we can use in school we would be very grateful of any donations.

PSHE/RSE

Pupils will be following a programme called PELICAN (promoting emotional literacy in children with additional needs). We will be developing emotional resilience and creating self toolkits to support our young people's emotional regulation.



Preparation for Adulthood

Pupils will learn how to complete chores, routines and maintenance in the classroom and link this to household chores.



Physical Education

This term, Robin class will be focusing on developing their understanding of health and fitness. We will be participating in a range of fitness programmes and investigating how this can benefit our physical and mental health.



Religious Education

Our RE focus for term 4 is: *Who is a Christian and what do they believe?*

We will be exploring different stories, traditions and customs within Christianity.



Computing

Our Computing focus this term is to use devices to collect data and information. We will be using a range of applications to collect and present data in the form of graphs, tables and spreadsheets. We will also be learning how to compose an email.

Careers

For careers this term we will be looking at pre-employability skills and how we can find work.

