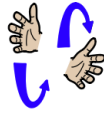
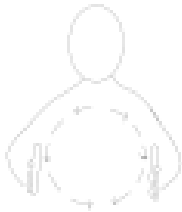


Core signs for our topic this term.



Our topic this term is 'Retail', here are some related signs for you to practice.

Earth



People



Animals



Plants



Food



Water



Don't forget to say the words as you sign!



Owl Class Information Booklet

Term 4
Feb—April
2026

IfieldSchool

Class

Teacher and TAs

Mr R Skirving (Class Teacher)
Paige Dayton (TALL)
David Drnan (TA)
Emilia Harrison (TA)
Dionne Stevens Cullum (TA)
Chloe Bond (MDS)

Experiences/visits/visitors

Regular events:

Monday: PE
Wednesday: Music/Gong
Wednesday: PE Enrichment MEAPA



General Information

Welcome back to Term 4! We hope you had an enjoyable break. Please share any photos with us.

This term, our topic is "In the News". Owl class will look at I'm Planet Earth — the place you call home. Every day, I support humans, plants, and animals alike. I provide the food that nourishes you, the water that refreshes you, and the air that keeps you alive.

Homework and Contact

Thank you for using the Home/School Journals - the comments we receive are always useful; please continue to let us know if we can help with any concerns or if there is anything interesting to tell us.

Interventions

Intensive interaction, sensory circuit and sensory stories are daily interventions which meet students sensory needs and develop communication and interaction skills.



Digital Skills

Students will be exploring early computing skills through playful, hands-on activities using the iPads and the interactive Smart Board. These experiences will help them build confidence when using technology and support their understanding of how digital tools work in everyday life.

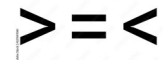
Communication

Students will use communication boards to support their requests for items. There will be a personalised focus on Speech and Language targets to facilitate communication with a range of communication partners.



Foundations for Maths

Students will be diving into hands on maths activities using familiar objects from around the classroom and outdoor environment. This practical approach will help them build confidence as they explore numbers, size, and problem solving in meaningful, playful ways.



EAD

Students will continue to share activities and work with partners during Art. This collaborative approach encourages creativity, communication, and confidence as students explore different materials and techniques together.



Foundations for Literacy



Students will continue to strengthen their communication and literacy skills this term. In Owl Class, students will be exploring stories in a rich, imaginative way, using role play, props and early mark-making to deepen their understanding of books and storytelling.

Employability

This term, the students will also be exploring and investigating the different roles people have in the workplace. They'll learn about a wide range of jobs, from community helpers to creative professions, and discover how each role contributes to the world around them.



Physical Education:

This term, our learning theme is Target Practice. We'll be exploring a range of sports and activities that rely on accuracy, concentration, and control.



Preparation for Adulthood

Students will be taking part in a range of sensory food experiences designed to build confidence, curiosity and positive attitudes towards healthy eating. These activities will give them the chance to explore new tastes, smells and textures in a fun, relaxed and supportive environment.

PE Enrichment

Students will take part in various activities throughout the school year. This term students are going to MEAPA gym



Core texts

Please Help Planet Earth -
A Ladybird Eco Book

What a Waste by Jess French