

Core signs for our topic this term.



Our topic this term is 'Animal Homes'
Here are some related signs for you to practice.

Owl



Farm



trampoline



Baby



Animal



Don't forget to say the words as you sign!



Kingfisher Class Information Booklet

Term 4
Feb—April 2026

lfieldSchool

Class Teacher and TAs

Stephanie Batten (Teacher)
Hubert Flavius (TALL)
Sharon Weeks
Susan Nabwire
Natalie Hicklin

Regular events:

Wednesday: Music
Thursday: PE Enrichment—Bikes
Friday AM: PE
Friday PM: Swimming



General Information

Hello from Kingfisher class, we are all ready for another busy, fun and enjoyable new term taking us into Spring.

This term we will be exploring 'Animal Homes'. Our core texts this term will be Owl Babies, Old MacDonal, Animals Underground and Torchlight.

Homework and Contact

Thank you for using the Home/School Journals - the comments we receive are always useful; please continue to let us know if we can help with any concerns or if there is anything interesting to tell us.

Interventions

Tacpac, Intensive interaction, sensory circuit and sensory stories are daily interventions which meet students sensory needs and develop communication and interaction skills, along with Attention Autism and the Curiosity Programme.



Preparing for adulthood

Students will be focusing on key areas, including; developing independence, health and well-being and social/ community engagement through a range of exciting activities, including educational off-site visits, brushing hair and teeth and expressing preferences and making decisions.

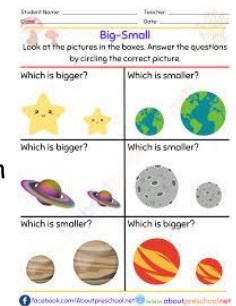
Communication

Students will work on personalised speech and language targets. Students will be encouraged to communicate with a range of communication partners. They will engage in a number of activities, including, singing songs, Intensive Interaction and The Curiosity Programme.



Maths

Kingfisher class will be Counting objects up to 5 and beginning to match numerals. Colour and pattern recognition.



Topic

In our topic work this term, we are focussing on "Animal Homes". Our core texts will be; Owl Babies, Old MacDonal, Animals Underground and Torchlight



English



Students will continue to develop their communication and literacy skills.

Students will; Show an interest in books when 'reading' with a member of staff. Begin to make marks for a purpose.

Employability

Kingfisher class students will be focussing on developing their social skills through group activities, such as PE and turn taking games. They will learn to recognise and follow routines and develop their communication skills through requesting and commenting.

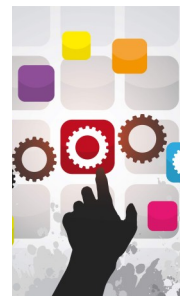
PSED/Citizenship/RSE

This term we are focusing on; Beginning to follow instructions. Identify safe/unsafe behaviour. Knowing who they can go to if they feel unsafe.



Digital Skills

Students will focus on identifying a single property of an object or animal e.g. soft. Demonstrates curiosity in the world outside.



PE Enrichment

Students will take part in various activities throughout the school year. These will include physical development activities and off-site visits.

