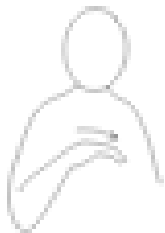


Core signs for our topic this term.

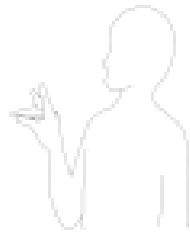


Our topic this term is 'Animal Homes'
Here are some related signs for you to practice.

Home/habitat



animal



life



diet



Don't forget to say the words as you sign!



Heron Class

Information for
parents

Term 4
January 2026

IfieldSchool

Class Teacher and TAs

Sarah Smith (Class teacher)
Jess Chitty (Class teacher/ ITT)
Karen Wright
Jenny Dickman
Gurpreet Kaur
Roxann Denham

Regular events:

Tuesday: Music and PE
Wednesday: Violin lessons
Thursday: PE Enrichment




Curriculum information

Ideas for home

We would encourage you to read with your child at home when possible. We will be able to provide a selection of books and a reading record to accompany this.

General Information

Please continue to use the Home/School Journals to liaise with us and we welcome any questions you may have. Please ensure that your child has the appropriate named clothing for activities we are doing this year such as PE and PE enrichment. If your child would like to have a snack at playtime, please can this be sent in their school bag.

<p>English:</p> <p>We will be reading the following Fiction and Non fiction texts in English this term, in line with our topic 'Animal Homes':</p> <p>The Sheep Pig by Dick King-Smith</p> <p>Amazing Animal Homes by Chris Packham</p> <p>By consolidating our knowledge of skills gained this year in our SPAG sessions, we aim to develop our creative writing skills.</p> <p>We will also learning key skills required to write persuasively and formally.</p> <p>Lastly we will be applying the subject knowledge gained from our non fiction text to create fact files about animals and their habitats.</p>	<p>Maths:</p> <p>Our maths focus this term will be money as well as multiplication and division. We will continue to work towards our EHCP targets as well as using the White Rose maths scheme of work.</p> 	<p>Science:</p> <p>In Science, we will be investigating and extending our knowledge of animals and their habitats from across the world. Each week we will be focusing on a different continent and we hope to broaden the knowledge our students knowledge of the world around them.</p>	<p>DT</p> <p>Applying our topic focus, Animal Homes, we will be creating our own model versions in DT. We will plan and design our own habitats as well as helping to source the materials needed to make our finished product. If you have any recyclable materials that we can use in school we would be very grateful of any donations.</p>
<p>Physical Education:</p> <p>This term, Heron class will be focusing on developing their understanding of health and fitness. We will be participating in a range of fitness programmes and investigating how this can benefit our physical and mental health.</p>	<p>Religious Education:</p> <p>Our RE focus for term 4 is: <i>Who is a Christian and what do they believe?</i></p> <p>We will be exploring different stories, traditions and customs within Christianity.</p>	<p>Geography</p> <p>In Geography, students will be developing their map reading skills. We will be using maps from our local community and consolidating our knowledge of keys shown on a map. We will also be using maps of places that we wish to visit this term, i.e. The Woodville Halls and a farm.</p>	<p>Music</p> <p>Pupils will develop their instrumental skills to play a range of melodies linked to 'The Big Reveal's'. Intergalactic Emergency project; they will develop their notational skills to recognise pitched notes and rhythms to play as an ensemble. Pupils will continue their violin lessons.</p>
<p>Guided Reading</p> <p>Pupils in Heron class will access a daily Guided Reading session after their lunch time break. This will include group and individual reading opportunities, comprehension tasks as well as the use of Typing club software to upskill our touch typing skills.</p>	<p>Computing:</p> <p>Our computing focus this term is to use devices to collect data and information. We will be using a range of applications to collect and present data in the form of graphs, tables and spreadsheets. We will also be learning how to compose an email.</p>	<p>PSHE and RSE:</p> <p>In PSHE we will be learning about how to be a democratic citizen as well as the law and justice system followed in the UK.</p> <p>In RSE we will be gaining understanding of intimate and sexual relationships.</p>	