

Core signs for our topic this term.



Our topic this term is 'Time Travellers'
Here are some related signs for you to practice.

time



Tap twice

travel



Two fingers
journey forward

machine



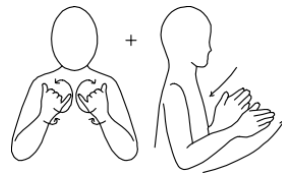
history



Calm



festival



Don't forget to say the words as you sign!



Woodpecker Class Information Booklet Term 3 Jan/Feb 2026

IfieldSchool

Class Teacher and TAs

Roz Rana (Teacher)
Claire Hill (Teaching Assistant)
Karolina Starnowska (Teaching Assistant)
Tallia Kingston (Teaching Assistant)



Regular events:

Monday: PE
Tuesday: Music
Thursday : PE Enrichment Parks

General Information

A warm welcome to Woodpecker Class. We are looking forward to an exciting Term 3, with visits to a range of parks in PE Enrichment and gymnastics activities during PE.

This terms topic is called "Time Travellers"

Homework and Contact

Thank you for using the Home/School Journals - the comments we receive are always useful; please continue to let us know if we can help with any concerns or if there is anything interesting to tell us.

Interventions

Intensive interaction, sensory circuit and sensory stories are daily interventions which meet pupils sensory needs and develop communication and interaction skills, along with Attention Autism.



Preparing for adulthood

Students will be practising life skills such as pouring, using a knife and fork. Students will be exploring how to brush their hair and fasten zips.



Communication

Pupils will work on personalised speech and language targets. Pupils will be encouraged to communicate with a range of communication partners. They will engage in a number of activities, including, singing songs, Intensive Interaction and colourful semantics.



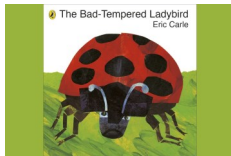
Maths

Woodpecker class will be exploring Now/Next and finished Making requests for desired objects, developing counting like behaviours same and different.

Topic

In our topic work this term, we are focussing on "Time Travelers"

We will be exploring Looks closely at similarities, differences, patterns and change in nature.



Art and Design

Students will be explore using a range of colours and creating simple visual art with bright colours.



Literacy

Students will name objects, join in with familiar stories and rhymes.

Students will be exploring the books "The bad tempered ladybird" and "The dinosaur who pooped the past".

PE

This term in PE, pupils will take part in a gymnastics unit designed to develop balance, strength, agility, and coordination. Through structured use of apparatus and floor work, they will combine rolling, climbing, balancing and jumping into simple movement sequences to build skill, confidence and control.

PSED/Citizenship/RSE

This term in PSED and RSE we will be discussing changes the body goes through during adolescence.



Music

Pupils will develop their exploratory skills to identify music from a range of countries with a focus on Pentatonic scales used in Asia using switches and online media. Pupils will explore their compositional skills to participate in the English National Opera's 'Finish This' project to create an original musical piece for their class.

PE Enrichment

This term Woodpecker class will be going to a range of parks on Thursday mornings as our PE Enrichment.

