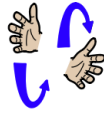


Core signs for our topic this term.

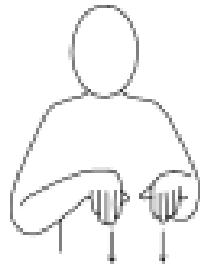


Our topic this term is 'Retail', here are some related signs for you to practice.

customer



shop



money



cashier



Don't forget to say the words as you sign!



Owl Class Information Booklet

Term 3
Jan—Feb
2026

IfieldSchool

Class

Teacher and TAs

Mr R Skirving (Class Teacher)
Paige Dayton (TALL)
David Drnan (TA)
Emilia Harrison (TA)
Dionne Stevens Cullum (TA)
Chloe Bond (MDS)



Experiences/visits/visitors

Regular events:

Monday: PE
Wednesday: Music/Gong
Thursday: PE Enrichment (Rugby)

Please ensure your child has appropriate named outdoor clothes for rugby.

General Information

Welcome back to Term 3! We hope you had an enjoyable Christmas break. Please share any photos with us.

This term, our learning journey will be inspired by the fascinating world of Retail. Together, we'll explore how shops work, discover the roles of customers and shopkeepers, and learn about money, counting, and community life.

Homework and Contact

Thank you for using the Home/School Journals - the comments we receive are always useful; please continue to let us know if we can help with any concerns or if there is anything interesting to tell us.

Interventions

Intensive interaction, sensory circuit and sensory stories are daily interventions which meet students sensory needs and develop communication and interaction skills.



Digital Skills

Students are using iPads and laptops to explore a range of programmes, developing their awareness of how their actions produce different outcomes. In Owl Class, children will learn to recognise and select familiar icons, using them to take photos and record videos.

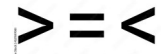
Communication

Students will use communication boards to support their requests for items. There will be a personalised focus on Speech and Language targets to facilitate communication with a range of communication partners.



Foundations for Maths

Students will be exploring a variety of mathematical concepts through hands-on activities. In Owl Class, students will compare the weight of different objects, identify items that are the same length or differ in length, and match objects based on clear and obvious criteria.



EAD

Students will investigate and experiment with a range of materials in creative and practical ways, making meaningful connections to our topic of "Retail."



Foundations for Literacy



Students will continue to strengthen their communication and literacy skills this term. In Owl Class, students will use rich descriptive language and practice forming sentences that include a subject, verb, and object as they describe pictures and experiences.

Employability

Students will continue to deepen their understanding of employment by engaging in work-related activities. They will explore and investigate the different uniforms people wear in various jobs, and practice following clear work-related instructions to build confidence, independence, and awareness of workplace roles.



Physical Education:

This term we will focus on fitness. Students will participate in various exercise circuits and use equipment to support a healthy lifestyle.



Preparation for Adulthood

Students will be developing a wide range of essential living skills to support their growing independence. In Owl Class, students will have the opportunity to prepare and make a variety of foods, building confidence in practical tasks while learning about healthy choices, safety, and teamwork."

PE Enrichment

Students will take part in various activities throughout the school year. This term students are taking part in rugby!



Core texts

The Shopping Basket by John Burningham

Nanette's Baguette by Mo Willems

Don't Forget the Bacon by Pat Hutchins