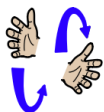


## Core signs for our topic this term.



Our topic this term is 'Once Upon a Time', here are some related signs for you to practice.

Grandma



Fox



Run



Bridge



Wolf



Goat



Story



Who?



Don't forget to say the words as you sign!



Beech Class  
Key Stage 1  
Information  
for parents/  
carers  
Term 3  
2026

IfieldSchool

**Class Teacher and Teaching Assistants:**  
Nicole Bartholomew (UQT)  
Charlotte Conway (Teaching Assistant)  
Kate Tucker (Teaching Assistant)  
Nicky Wallington\* (Teaching Assistant)

### Regular events:

**Rainbow Room—**

**PE— Friday AM—**Please make sure pupils bring in their PE kits for this day.

**Music— Wednesday PM**

**PE Enrichment— Tuesday PM** Monkey Bizz

**Sensory Room— Thursday PM**

**Swimming— Monday pm** — Please make sure pupils bring in their swim kits for this day.

**Monday 26th January—Stay and Learn**

**Friday 6th February—Family Disco**

This term our focus will be;

'Once Upon Time'



### General Information:

Happy New Year! This term we will be busy using our senses to explore different materials, focusing on traditional tales. We will be counting in the environment when building and through number rhymes. We will begin to develop the concept of time through daily routines and explore hot and cold temperatures. We will explore size such as big, medium and small and develop our preference for textured bricks, wooden blocks, crates and Duplo.

### Homework and contact:

The Home/School Journals continue to be our principle means of communicating with you. Please check them each day. In addition messages can be emailed to the office for our attention.

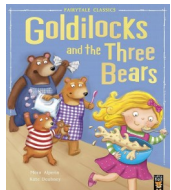
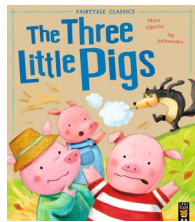
We use Evidence for Learning for weekly photographs, we hope you are enjoying seeing a glimpse of what your child is engaging with at school each week.

### Ideas for home:

If you have any photos of your child enjoying topic related activities, please feel free to share them by emailing [office@ifield.kent.sch.uk](mailto:office@ifield.kent.sch.uk)

## Foundations for Literacy

Beech Class will begin to engage with a picture book / sensory story and be able to show anticipation to communicate a repetitive word / sound in a story using signs, visuals and switches. We will use repetitive phrases in books such as "I'll huff and I'll puff and blow your house down" and sequence events, recognising key characters from the story.



## Foundations for Maths:

During our Maths focus sessions we will be exploring maths concepts, focusing on size; big, medium and small. Beech Class will be learning about positional language and continuing to develop their understanding of number order/ value. These will be explored through real life experiences, planned play and adult led activities.

## Art/Design

Beech Class will start to express preferences for specific textures and investigates different types of bricks eg wooden blocks, crates, Duplo. We will explore manipulating materials such as stretching, tearing, squashing dough into rough shapes.

## Understanding the World

This term we will be learning about different environments e.g. wood, forest, field. We will be naming basic features of the environment and be taking part in basic mapping activities. We will be learning positional language such as on, in, under, next to, behind and in front.

## Therapies

Beech Class will be accessing

- Cleverfingers
- Write from the start
- Gong Therapy
- Therapeutic Music
- Brushing
- Compressions
- Sensory Circuits
- SLIC support
- OT support

As required following observations and Assessments by our therapists

## Fine Motor Skills

Beech Class will have lots of opportunities to develop their fine motor skills. We will be using different tools to manipulate play dough. Beech Class will also be using tools and different construction materials to build bridges.



## PSHE (Personal, Social and Health Education) and RSE

Beech Class will be building on our positive relationships with adults and peers in their class, sharing space and resources with others. We are developing an understanding of what is right and wrong, and identifying rules which need to be followed.

## Physical Education:

PE will be on a Friday morning. This term we are going to be doing ball games. This will involve catching, throwing, rolling, kicking, pushing and pulling. Beech Class will be using various types of sports equipment. Swimming will be on a Monday afternoon. We are continuing to develop our confidence in the water.

## Communication/Language

Personalised Speech and Language targets will be created to enable early communication. These include initiation, nursery rhymes, Curiosity Programme, Attention Autism (Explore only), EHCP targets, 1-1 interventions, and Intensive Interaction.

## PE Enrichment

The pupils will have PE Enrichment on Tuesday afternoons.

This term Beech Class will be going to Monkey Bizz.

## Music

Pupils will encounter a wider range of nursery rhymes linked to their class room activities. They will continue to develop their musical skills through exploring percussion instruments, a variety of drums with a focus on symbol reinforcement to communicate what they are exploring.