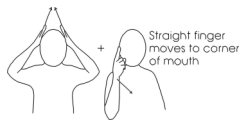


Core signs for our topic this term.



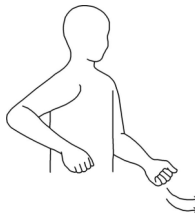
Our topic this term is ' A Special Time ', here are some related signs for you to practice.

witch



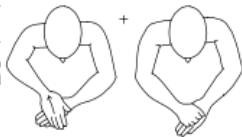
Straight finger moves to corner of mouth

broomstick

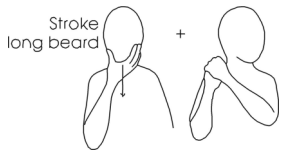


Christmas

Slide right hand over back of left hand towards body, then close right hand and place on back of left hand

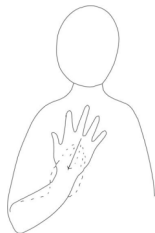


Santa



Stroke long beard

Autumn



Winter



Don't forget to say the words as you sign!



Cedar Class EYFS Information for parents Term 2 2025



Class Teacher and Teaching Assistants:

Carolyn Welham (Teacher)
Lily McPhee (TA)
Bobbi Spinner (TA)
Kelly Holder (TA)
Sekinah Hassan (TA)
Darja Kulebina (TA)
Rosie Owen (Midday Supervisor)

This term our focus will be on;

'A Special Time'



We are looking forward to parent/ carers joining us for our Stay and Learn session this term.

Regular events:

Physical Development takes place every day with a focus each Monday.
PE enrichment this term is Rebound and it will be on a Tuesday afternoon.

General Information:

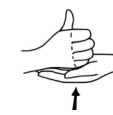
Welcome back! We hope you had a lovely half-term break. We are looking forward to completing lots of activities linked to our new topic which is 'A Special Time', sharing the stories of ' Whoosh went the witch! Kipper's Birthday and That's not my Santa. ' .

Homework and contact:

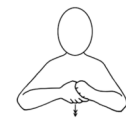
Please share books with your child every day.
The Home/School Journals are in place for us both to write in so we can keep each other up to date about your children.
If you have any questions please contact the school office or speak to one of the team when dropping off or picking up.

Ideas for home:

Key signs for our topic this term:
Please continue to share the fun you have at home and the toys and games your children like play with.



Light



Dark

Foundations for Literacy

During our Literacy focus we will share sensory stories, including 'Whoosh went the witch!' 'Kipper's Birthday' and 'That's not my Santa'. We will enjoy familiar songs and rhymes, using visuals to help us communicate. We will be learning Christmas songs as we learn about the Christmas Story. We will explore lots of mark making both inside and in our garden area using a range of materials.

Foundations for Maths:

During our Maths focus sessions we will be exploring maths concepts, focusing on counting objects in the environment as we explore the learning resources. These will be explored through real life experiences, planned play and adult led activities.

Understanding the world

This term we will be noticing and learning about changes in the environment e.g. weather (hot/cold) and choosing appropriate clothing.

We will be using the materials that Autumn provides to explore textures and materials e.g. leaves, twigs and conkers.

Fine Motor Skills

Cedar Class will have lots of opportunities this term to develop our fine motor skills through the use of tools and different apparatus. Whilst exploring clothing for different weather, we will be developing our self-help skills by using zips and buttons.

Art/Design

This term we will be exploring different colours and textures, using a multisensory approach. Cedar Class will be exploring the textures of Autumn using pumpkins, leaves and twigs.



Fun With Foods

Foods can cause anxieties for our pupils with ASD. Cedar Class will be following the 'Fun with Food' programme to help develop your child's tolerance of different smells and textures. This term we will be working on dry food materials.

Therapies

Cedar Class will be accessing

- Cleverfingers
- TAC PAC
- Gong Therapy
- Therapeutic Music
- Brushing
- Compressions
- Sensory Circuits
- SLIC support
- OT support

As required following observations and Assessments by our therapists

Personal, Social and Emotional Development

Cedar Class will continue building positive relationships with adults and peers in their class, getting to know their friends, sharing space and resources with others. We are developing awareness of our routines and settling in the classroom finding out where resources belong.

Physical Education:

PE will be on a Monday and Tuesday.

Communication/Language

Personalised Speech and Language targets have been created to enable early communication. These include initiation, nursery rhymes, Curiosity Programme, Attention Autism (Explore only), EHCP targets, 1-1 interventions, and Intensive Interaction.

Music

Cedar Class will be enjoying music sessions where we will be learning to respond to music and follow simple instructions. We will explore lots of different instruments and the sounds they make.