

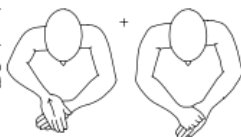
Core signs for our topic this term.



Our topic this term is ' Special stories ', here are some related signs for you to practice.

Christmas

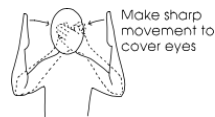
Slide right hand over back of left hand towards body, then close right hand and place on back of left hand



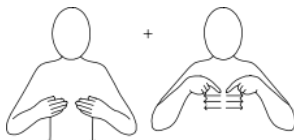
light



dark



skeleton



owl



story



Don't forget to say the words as you sign!



Ash Class

Information for families

Term 2
2025-2026



Class Teacher and TA's

Anna Vitalis (Teacher)
Jennifer Cook (TALL)
Liza Morris (TA)
Sharon Rai (TA)
Aiesha Jackson (TA)

Experiences/visits/visitors

Monday 10th November — **School Photos**
Friday 21st November — **Children in Need**
Tuesday 25th November — **Parents Evening**
Tuesday 2nd December — **PE Enrichment Open Afternoon**
Thursday 11th December — **Christmas Lunch**
Friday 12th December — **Christmas Market**
Tuesday 16th December — **Nativity**

Regular events:

PE Enrichment — every Tuesday—Swimming this term
Swimming — every Monday. Please make sure pupils bring in their swim kits for this day.
PE — every Friday. Please make sure pupils bring in their PE kits for this day.

Special Stories



General Information

Welcome back to Ash Class. This term our topic will be "Special Stories" This topic will involve us exploring a range of stories with the theme of family, as we prepare to celebrate Christmas with our own families.

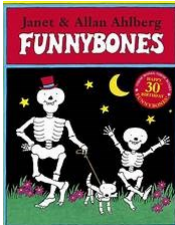
Homework and contact:

Please share books with your child every day.
Please support our use of PECs by practicing at home as often as possible.
The Home/School Journals are in place for us both to write in so we can keep each other up to date about your children.
If you have any questions please contact the school office or speak to one of the team when dropping off or picking up.

As the weather changes, please consider sending in a clearly named pair of wellies for your child to wear at playtime, we have a welly store to keep them together, under cover in our garden.

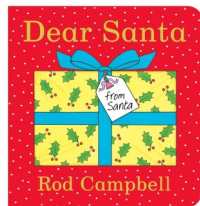
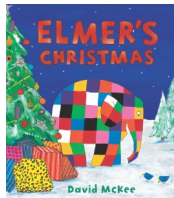
Foundations for Literacy

We will be sharing the stories Funny Bones by Janet and Allan Ahlberg



Peekabo Pumpkin by Camilla Reid

Elmer's Christmas by David McKee



Dear Santa by Rod Campbell

Physical Education

This term, pupils are exploring movement and control using large, light balls such as Peanut and Swiss balls. Through rolling, bouncing, and gentle target games, they are developing balance, coordination, and spatial awareness in a fun, sensory way.

Foundations for Maths

Pupils will extend their understanding and application of numbers through songs and themed activities. They will explore creating and completing repeating patterns using natural resources. We will be exploring shapes and pupils will use shapes when making different patterns.

Art/Design

We will be completing different themed activities throughout the term, including using pumpkins for sensory play and art for Halloween. We will be exploring firework art and listen to different sounds linked to Bonfire Night. We will be making Christmas cards and listening to Christmas songs.

Communication/Language

Personalised Speech and Language targets will be created to enable early communication. These include initiation, nursery rhymes, Curiosity Programme, Attention Autism (Explore only), EHCP targets, 1-1 interventions, and Intensive Interaction.

Understanding the World

This term we will be learning about the different seasons by noticing changes to weather and exploring through sensory play opportunities.

Therapies

Children continue to access their sensory diets. Some of these include:

- Cleverfingers
- Write from the start
- Therapeutic Music
- Brushing
- Compressions
- Sensory Circuits
- SLIC support
- OT support

PE Enrichment

Pupils will have PE Enrichment on Tuesday afternoons. This term it will be Monkey Bizz.

Fine Motor

Ash Class will have lots of opportunities this term to develop our fine motor skills through the use of tools and different apparatus. We continue to build on functional fine motor by practicing putting our coats, hats and wellies.

PSHE

Our theme this term is Mental Health and Wellbeing. We will be learning different ways to regulate and co-regulate. We will be practising using our own strategies with an adult, where this is appropriate.

Music

Pupils will continue developing their musical skills by exploring percussion instruments, a variety of drums and a variety of musical elements. Pupils will encounter classical music and Christmas themed songs.