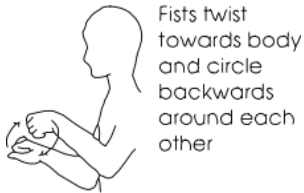


## Core signs for our topic this term.



Our topic this term is 'Growing and Changing'  
Here are some related signs for you to practice.

### change



### grow



### baby



### caterpillar



### butterfly



Don't forget to say the words as you sign!



## Woodpecker Class Information Booklet

Term 1  
Sept/Oct



### Class Teacher and TAs

Lauren Homewood (Teacher)  
Claire Hill (Teaching Assistant)  
Karolina Starnowska (Teaching Assistant)  
Tallia Kingston (Teaching Assistant)



### Regular events:

**Monday: PE**  
**Tuesday: Forest School (Please provide wellie boots and waterproof clothing)**  
**Wednesday: MEAPA gym**

### General Information

A warm welcome to Woodpecker Class. We have had a great start to the new academic year and are looking forward to experiencing and learning together.

### Homework and Contact

Thank you for using the Home/School Journals - the comments we receive are always useful; please continue to let us know if we can help with any concerns or if there is anything interesting to tell us.

#### Activity Ideas for Home:

- Explore the outside e.g. park, garden to find things that are changing such as leaves.
- Look at old family photos. How have you changed and grown?
- Explore patterns and size, looking for objects that are big and small, long and short. Can you make repeating patterns using toys or favourite fruits?

## Interventions

Intensive interaction, sensory circuit and sensory stories are daily interventions which meet pupils sensory needs and develop communication and interaction skills, along with Attention Autism.



## Preparing for adulthood

Pupils will be focusing on key areas, including; developing independence, health and well-being and social/ community engagement through a range of exciting activities, including educational off-site visits, brushing hair and teeth and expressing preferences and making decisions.

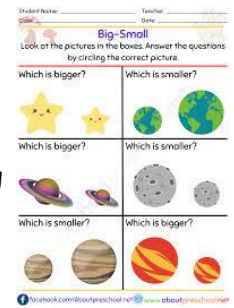
## Communication

Pupils will work on personalised speech and language targets. Pupils will be encouraged to communicate with a range of communication partners. They will engage in a number of activities, including, singing songs, Intensive Interaction and colourful semantics.



## Maths

Woodpecker class will be exploring size through comparing/ ordering size, patterns, days of the week, counting and sequencing.



## Topic

In our topic work this term, we are focussing on "Growing and Changing". We will be looking at growing and changing humans and butterflies, home corner role play— looking after a baby and personal timelines.



## Art and Design

Pupils will be explore using a range of media to create patterns and explore shape e.g. creating butterfly and caterpillar art work. Pupils will also have opportunities to explore a range of textures as part of sensory trays and explore language linked to these textures.

## Literacy

Pupils will name objects, join in with familiar stories and rhymes, turn pages in a book, engaging in sensory stories, mark making and developing letter formation linked to individual phonics programmes. Pupils will also explore using colourful semantics to build sentences about our key texts.

## Employability

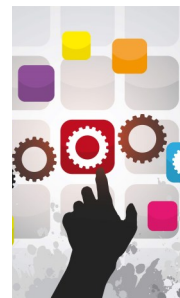
Woodpecker class pupils will be focussing on developing their social skills through group activities, such as PE and turn taking games. They will learn to recognise and follow routines and develop their communication skills through requesting and commenting.

## PSED/Citizenship/RSE

This term we are focusing on expressing our preferences and building relationships with our new class group and adults. We will be working on our social interactions with peers and joining with group activities.

## Digital Skills

Pupils will develop their digital skills, using touch screen technologies and navigating games and apps linked to our topic theme.



## PE Enrichment

This term Woodpecker class will be visiting MEAPA Gym on **Wednesday mornings** as our PE Enrichment.

