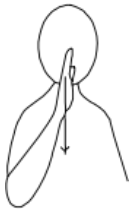


Core signs for our topic this term.



Our topic this term is 'Healthy Minds', here are some related signs for you to practice.

sad



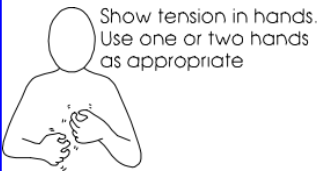
happy



scared

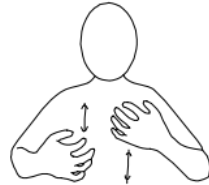


angry



Show tension in hands.
Use one or two hands
as appropriate

excited



calm



Don't forget to say the words as you sign!



Owl Class Information Booklet

Term 1
Sept/Oct
2025



Class Teacher and TAs

Mr R Skirving (Class Teacher)
Paige Dayton (TALL)
David Drnan (TA)
Emilia Harrison (TA)
Chloe Bond (MDS)



Experiences/visits/visitors

Regular events:

Monday: PE
Wednesday: Music/Gong
Thursday: PE Enrichment (Ice Skating)

Please ensure your child has appropriate named warm clothing for Ice Skating.

General Information

A warm welcome to Owl Class. We have had a great start to the new academic year and are looking forward to experiencing and learning together.

This term we will be exploring 'Healthy Minds'.

Homework and Contact

Thank you for using the Home/School Journals - the comments we receive are always useful; please continue to let us know if we can help with any concerns or if there is anything interesting to tell us.

Interventions

Tacpac , Intensive interaction, sensory circuit and sensory stories are daily interventions which meet students sensory needs and develop communication and interaction skills.



Digital Skills

Students will demonstrate an awareness of switches, making choices on an iPad, respond to a sound or visual when accessing the Smart board



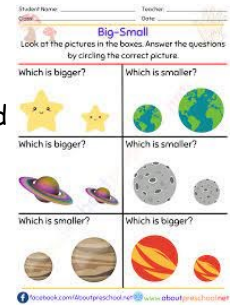
Communication

Students will use communication boards to support their requests for items. There will be a personalised focus on Speech and Language targets to facilitate communication with a range of communication partners.



Foundations for Maths

Students will be using familiar objects to count, sort and order. Develop associated vocabulary, i.e. bigger, smaller, longer, 1:1 correspondence. One more, one less



EAD

Students will explore different materials in a variety of ways, They will create a collage using different materials and textured fabrics.



Foundations for Literacy



Students will continue to develop play around roles in stories, using props, identifies features of books, i.e. cover, pages, front, back, mark making to include pre and writing shapes in own name

Employability

Students will continue to learn about employment by following their task lists with symbols/words with prompts.



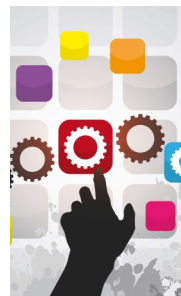
Physical Education

This term we are focusing on various ball skills from catching, throwing, kicking, passing and hitting.



Preparation for Adulthood

Owl class will focus on dressing and undressing, managing fastenings, comfortable grip on items: could include pencils, art materials and puzzles as appropriate.



PE Enrichment

Students will take part in various activities throughout the school year. This term students are taking part in ice skating!

