

Core signs for our topic this term.

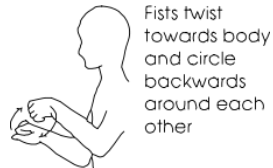


Our topic this term is 'Growing and Changing'
Here are some related signs for you to practice.

growing



changing

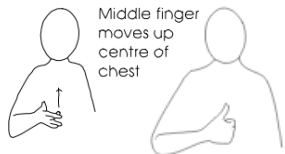


Fists twist towards body and circle backwards around each other

future



wellbeing



Middle finger moves up centre of chest

safety



Blade of right cupped hand moves from left finger tips onto palm
Hands move back together to touch body

Don't forget to say the words as you sign!



Kingfisher Class Information Booklet

Term 1
Sept/Oct

IfieldSchool

Class Teacher and TAs

Stephanie Batten (Teacher)
Anu Singh (TALL)
Ian Hallett
Katie Pearce
Susan Nabwire
Vicky Barney



Regular events:

Wednesday: Music/ Forest School
Thursday: PE Enrichment
Friday: PE

General Information

A warm welcome to Kingfisher Class. We have had a great start to the new academic year and are looking forward to experiencing and learning together.

This term we will be exploring 'Growing and Changing'.

Homework and Contact

Thank you for using the Home/School Journals - the comments we receive are always useful; please continue to let us know if we can help with any concerns or if there is anything interesting to tell us.

Interventions

Tacpac, Intensive interaction, sensory circuit and sensory stories are daily interventions which meet pupils sensory needs and develop communication and interaction skills, along with Attention Autism and the Curiosity Programme.



Preparing for adulthood

Pupils will be focusing on key areas, including; developing independence, health and well-being and social/ community engagement through a range of exciting activities, including educational off-site visits, brushing hair and teeth and expressing preferences and making decisions.

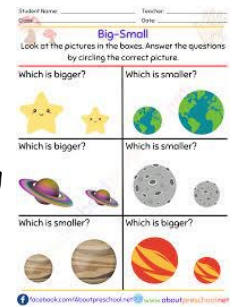
Communication

Pupils will work on personalised speech and language targets. Pupils will be encouraged to communicate with a range of communication partners. They will engage in a number of activities, including, singing songs, Intensive Interaction and The Curiosity Programme.



Maths

Kingfisher class will be exploring size through comparing/ ordering size, patterns, days of the week, counting and sequencing.



Topic

In our topic work this term, we are focussing on "Growing and Changing". We will be looking at growing and changing humans and butterflies, home corner role play— looking after a baby and personal timelines.



English



Pupils will continue to develop their communication and literacy skills.

Pupils will name objects, join in with familiar stories and rhymes, turn pages in a book, engaging in sensory stories, mark making and developing pre-writing skills.

Employability

Kingfisher class pupils will be focussing on developing their social skills through group activities, such as PE and turn taking games. They will learn to recognise and follow routines and develop their communication skills through requesting and commenting.

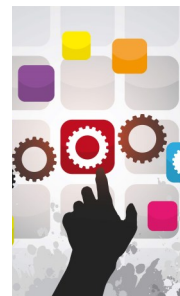
PSED/Citizenship/RSE

This term we are focusing on expressing preferences and decisions and regulation through the use of choice boards and turn taking activities. We will be exploring sensory trays and threading.



Digital Skills

Pupils will develop their digital skills, using switches and assistive technology. They will be working on matching cues/ symbols



PE Enrichment

Pupils will take part in various activities throughout the school year. These will include physical development activities and off-site visits.

