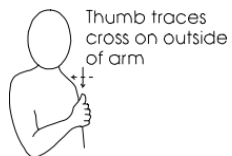


Core signs for our topic this term.



Our topic this term is 'Everyday Heroes', here are some related signs for you to practice.

nurse



Thumb traces cross on outside of arm

cook



fix

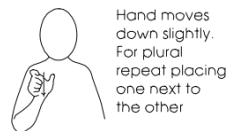


clean



Mime appropriately

hero



Hand moves down slightly. For plural repeat placing one next to the other

safe



Blade of right cupped hand moves from left finger tips onto palm

Hands move back together to touch body

Don't forget to say the words as you sign!



Maple Class Key stage 2 Information for parents Term 1 2025

IfieldSchool

Class Teacher and Teaching Assistants:

Leanne Crawford-Woods (Teacher)
Kerry Bux (TA)
Fathima Yoosof (TA)
Marie James (TA)
Megan Morris (TA)
Precious Ehigie (TA)

Experiences/visits/visitor:

We will be participating in our Harvest Festival this term.

Regular events:

Wednesday: PE Enrichment—Meapa Gym
Thursday: PE (please remember PE kits)
Friday: Swimming (Please remember swimming kits)



'Everyday Heroes'

Please see our newsletters for events through the academic year.

Please remember to label all of your child's belongings.

General Information:

Welcome to Maple Class! We hope that you had a lovely summer and had lots of fun together as a family. We are looking forward to the new academic year and completing lots of activities linked to our new topic 'Everyday Heroes'.

Homework and contact:

Please read and share books with your child every day.

The Home/School Journals are in place for us to write in so that we can keep each other up-to-date about your child. If you have any questions, please contact the school office or speak to one of the team when dropping off or picking up.

Ideas for home:

Make your child aware of those people around us who help us, for example: the delivery person, shop assistant, doctor or so on.
Have lots of fun playing together with your child with their favourite toys, this will help to support their communication, vocabulary and engagement.
Please engage with the signs linked to the topic for Term 1.

[Acceptable Use Policy](#)

Foundations for Literacy

During our Literacy focus sessions we will listen to lots of appropriate stories about real life heroes. We will also share sensory stories.

We will explore lots of mark-making both inside and in our garden area. We will enjoy familiar songs and rhymes and visuals to help us with our communication skills.

Foundations for Maths

During our Maths focus sessions we will be exploring maths concepts including number, shape, size, sequencing, measure and time. These will be explored through real life experiences, planned play opportunities and adult-led activities.

Understanding the world

This term we will be exploring our understanding of the roles of Everyday Heroes within the school community. We will focus on the school cooks, the maintenance team and the medical team who all help to keep us happy, safe and cared for when at school. We will do this through visits, exploratory play opportunities and stories.

Fine Motor Skills

We will have lots of opportunities this term to develop our fine motor skills through the use of tools and apparatus used by our school everyday heroes. We will explore cleaning tools, maintenance tools, and medical tools (such as: thermometers, bandages and liquid syringes).

Art and Design Technology

We will be exploring colour mixing and exploring using a range of conventional and unconventional tools to do so, such as: brooms, syringes and cooking utensils.



Fun With Foods

Foods can cause anxieties for our pupils with ASD. We will be following the 'Fun with Food' programme to help develop your child's tolerance of different smells and textures. This term we will be exploring dry food materials.

Therapies

We will be accessing:

- Fine motor packs
- Write from the Start
- Therapeutic Music
- Sensory Circuits
- SLIC support
- OT support

These will be personalised following observations and assessments by our therapists.

PSHE (Personal, social and health education) and RSE

We will be learning about how our emotions feel within our own bodies so that we can begin to understand our own feelings and those of others. We will focus on the feelings of happy, sad and angry.

Physical Education

This term, pupils are exploring movement through sensory play, games, and equipment-based challenges. From rolling and crawling to climbing and early jumps, each step builds confidence, coordination, and spatial awareness in a fun, supportive way.

Communication/Language

Personalised Speech and Language targets will be created to enable early communication. These include EHCP targets, 1-1 interventions, and Intensive Interaction. The class will be supported by SLIC who will oversee all Speech and Language strategies and resources.

PE Enrichment

This term, PE Enrichment will be every Wednesday Morning where pupils will attend Meapa Gym.



Music

Pupils will explore a range of tuned instruments including (but not limited to) keyboards, boom whackers and chime bars; they will have the opportunity to explore coloured notation and improvise their own melodies. Pupils will also encounter a range of songs relating to Harvest and people who helps us.