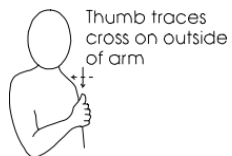


## Core signs for our topic this term.



Our topic this term is 'Everyday Heroes', here are some related signs for you to practice.

nurse



cook



fix



clean



hero



safe



Don't forget to say the words as you sign!



IfieldSchool

Hazel Class  
Key stage 2  
Information  
for parents  
Term 1  
2025

### Class Teacher and Teaching Assistants:

Alison Robinson (Teacher - Monday and Tuesday)  
Kellie Halliday-Clark (UQT—Thursday and Friday)  
Jack Morrison (Form Tutor)  
Victoria Hills (TALL Wednesday)  
Kayleigh Bauerfield (TA)  
Sandy Bones (TA)  
Michelle Reynolds (TA)  
Michelle Steadman (TA)



## 'Everyday Heroes'

### Events:

PE will take place each Monday morning. Please make sure pupils bring in their PE kits for this day. Swimming will take place each Tuesday. Please make sure pupils bring in their swim kits for this day.

### General Information:

Welcome back! We hope you had a lovely summer. We are looking forward to completing lots of activities linked to our new topic which is 'Everyday heroes'.

### Homework and contact:

Please share books with your child every day.

The Home/School Journals are in place for us both to write in so we can keep each other up to date about your children. If you have any questions please contact the school office or speak to one of the team when dropping off or picking up.

### Ideas for home:

Make your child aware of those people around us who help us. These should be those unsung heroes such as the Post person, the shopping assistant, the doctor etc. Have lots of fun playing together with your child with their favourite toys as this will help with their communication, vocabulary and engagement.

<p><b>Foundations for Literacy</b></p> <p>During our Literacy focus sessions we will listen to lots of appropriate stories about Real life Heroes. We will share sensory stories and explore lots of mark making both inside and in our garden area. We will enjoy familiar songs and rhymes, with support from visuals to help us communicate.</p>	<p><b>Foundations for Maths</b></p> <p>During our Maths focus sessions we will be exploring maths concepts including number, shape, size, sequencing, measure and time. These will be explored through real life experiences, planned play opportunities and adult led activities.</p>	<p><b>Understanding the World</b></p> <p>This term we will be exploring our understanding of the roles of Everyday Heroes within the community. We will focus on Teachers, Fire fighters, Police Officers and Doctors who all help to keep us happy, safe and cared for. We will do this through exploratory play opportunities, adult led activities and stories.</p>	<p><b>Fine/Gross Motor Skills</b></p> <p>Hazel Class will have lots of opportunities this term to develop their fine motor skills through the use of tools and apparatus linked to Every Day Heroes. We will explore using water sprays, ink for finger prints and liquid syringes. We will develop our gross motor skills by practising climbing small ladders and steps.</p>
<p><b>Art and Design</b></p> <p>We will be exploring colour mixing and exploring using a range of conventional and unconventional tools to do so such as sponges, syringes, sprays and cooking utensils.</p>	<p><b>Fun With Foods</b></p> <p>Foods can cause anxieties for our pupils with ASD. Hazel Class will be following the 'Fun with Food' programme to help develop your child's tolerance of different smells and textures. This term we will be exploring dry food materials.</p>	<p><b>Therapies</b></p> <p>Hazel Class will be accessing:</p> <ul style="list-style-type: none"> <li>• Cleverfingers</li> <li>• Therapeutic Music</li> <li>• Brushing</li> <li>• Compressions</li> <li>• Sensory Circuits</li> <li>• SLIC support</li> <li>• OT support</li> </ul> <p>As required following observations and assessments by our therapists.</p>	<p><b>PSHE</b></p> <p>Hazel Class will be learning about how our emotions feel within our own bodies so that we can begin to understand our own feelings and those of others. We will explore the story of 'The Colour Monster', and then focus on the feelings of happy, sad and angry.</p>
<p><b>Physical Education:</b></p> <p>PE will be on Monday mornings. This term, pupils are exploring movement through sensory play, games, and equipment-based challenges. From rolling and crawling to climbing and early jumps, each step builds confidence, coordination, and spatial awareness in a fun, supportive way. Swimming will be on Tuesday mornings.</p>	<p><b>Communication and Language</b></p> <p>Personalised Speech and Language targets will be created to enable early communication. These include EHCP targets, 1-1 interventions, and Intensive Interaction.</p>	<p><b>PE Enrichment</b></p> <p>The pupils will have PE Enrichment on Wednesday afternoons. This term we will be visiting the woods. Can you please supply suitable weather appropriate clothing that will be returned at the end of term.</p>	<p><b>Music</b></p> <p>Pupils will explore a range of tuned instruments including (but not limited to) keyboards, boom whackers and chime bars; they will have the opportunity to explore coloured notation and improvise their own melodies. Pupils will encounter a range of songs relating to Harvest and people who helps us.</p>