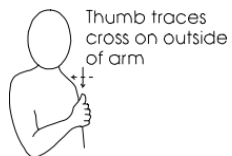


Core signs for our topic this term.



Our topic this term is 'Everyday Heroes', here are some related signs for you to practice.

nurse



cook



fix



clean



hero



safe



Don't forget to say the words as you sign!



IfieldSchool

Cherry Class
Key stage 2
Information
for parents
Term 1
2025

Class Teacher and Teaching Assistants:

Laura Botelho (Teacher)
Afua Akoto
Amy Cole (TALL)
Helen Jackson
Mark Bridle
Tracey Skinner

Experiences/visits/visitor

This term we have Forest school on Monday PM please ensure your child has suitable clothing and boots.



'Everyday Heroes'

Regular events:

PE Enrichment will take place Tuesday afternoons and will be 'parachute games'. PE will take place each Tuesday morning. Please make sure pupils bring in their PE kits for this day. Swimming will take place each Wednesday. Please make sure pupils bring in their swim kits for this day.

General Information:

Welcome back! We hope you had a lovely summer. We are looking forward to completing lots of activities linked to our new topic which is 'Everyday heroes'.

Homework and contact:

Please share books with your child every day.

The Home/School Journals are in place for us both to write in so we can keep each other up to date about your children. If you have any questions please contact the school office or speak to one of the team when dropping off or picking up.

Ideas for home:

Make your child aware of those people around us who help us. These should be those unsung heroes such as the Post person, the shopping assistant, the doctor etc. Have lots of fun playing together with your child with their favourite toys this will help with their communication, vocabulary and engagement.

<p>Foundations for Literacy</p> <p>During our Literacy focus sessions we will listen to lots of appropriate stories about 'Real life Heroes'. We will share sensory stories and explore lots of mark making both inside and in our garden area. We will enjoy familiar songs and rhymes and visuals to help us communicate.</p>	<p>Foundations for Maths:</p> <p>During our Maths focus sessions we will be exploring maths concepts including number, shape, size, sequencing, measure and time. These will be explored through real life experiences, planned play opportunities and adult led activities.</p>	<p>Understanding the world</p> <p>This term we will be exploring our understanding of the roles of Everyday Heroes within the school community. We will focus on the school cooks, the maintenance team and the medical team who all help to keep us happy, safe and cared for when at school. We will do this through visits, exploratory play opportunities and stories.</p>	<p>Fine Motor Skills</p> <p>Cherry Class will have lots of opportunities this term to develop our fine motor skills through the use of tools and apparatus used by our school everyday heroes. We will explore cleaning tools, maintenance tools, and medical tools such as thermometers, bandages and liquid syringes.</p>
<p>Art/Design</p> <p>We will be exploring colour mixing and exploring using a range of conventional and unconventional tools to make marks such as brooms, syringes and cooking utensils.</p>	<p>Fun With Foods</p> <p>Foods can cause anxieties for our pupils with ASD. Cherry Class will be following the 'Fun with Food' programme to help develop your child's tolerance of different smells and textures. This term we will be exploring dry food materials</p>	<p>Therapies</p> <p>Cherry Class will be accessing</p> <ul style="list-style-type: none"> • Cleverfingers • Write from the start • Therapeutic Music • Brushing • Compressions • Sensory Circuits • SLIC support • OT support <p>As required following observations and Assessments by our therapists</p>	<p>PSHE (Personal, social and health education) and RSE</p> <p>Cherry Class will be learning about how our emotions feel within our own bodies so that we can begin to understand our own feelings and those of others. We will focus on the feelings of happy, sad and angry.</p>
<p>Physical Education:</p> <p>PE will be on Tuesday mornings this term.. Please ensure your child wears comfortable clothing on this day as we do not change for PE. Swimming will be on a Wednesday this term. Our focus will be water confidence, developing independence in the pool and changing and floating safely on our backs.</p>	<p>Communication/Language</p> <p>Personalised Speech and Language targets will be created to enable early communication. These include EHCP targets, 1-1 interventions, and Intensive Interaction.</p>	<p>PE Enrichment</p> <p>The pupils will have PE Enrichment on Tuesday afternoons. This term it will be Parachute Games which will take place onsite.</p>	<p>Music</p> <p>Pupils will explore a range of tuned instruments including (but not limited to) keyboards, boom whackers and chime bars; they will have the opportunity to explore coloured notation and improvise their own melodies. Pupils will also encounter a range of songs relating to Harvest and people who helps us.</p>