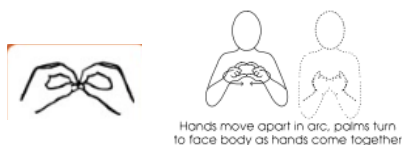


Core signs for our topic this term.



Our topic this term is 'We are Beech Class', here are some related signs for you to practice.



Beech Class



School



Friends



Help



Play



Learn

Don't forget to say the words as you sign!



Beech Class Key stage 1 Information for parents Term 1 2025

IfieldSchool

Class Teacher and Teaching Assistants:
Nicole Bartholomew (Teacher)
Ocean Chapman (TA)
Nicky Wallington (TA)
Kate Tucker (TA)

Experiences/visits/visitors:

As part of this exciting topic we will be exploring different environments around the school.

Regular events:

PE Enrichment will take place each Tuesday afternoon and will be Parachute games
Swimming will take place each Monday. Please make sure pupils bring in their swim kits for this day.
PE will take place each Friday morning. Please make sure pupils bring in their PE kits for this day.

We are 'Beech Class'

General Information:

Welcome back! We hope you had a lovely summer. We are looking forward to completing lots of activities linked to our new topic which is 'We are Beech Class'

Homework and contact:

Please share books with your child every day.
Please support our use of PECs by practicing at home as often as possible.

The Home/School Journals are in place for us both to write in so we can keep each other up to date about your children. If you have any questions please contact the school office or speak to one of the team when dropping off or picking up your child.

Ideas for home:

Please continue to share with us the fun you have at home and the toys and games your children like to play with.

Foundations for Literacy

During our Literacy focus we will share sensory stories, including Elmers Friends and Busy Friends . We will enjoy familiar songs and rhymes and use visuals to help us communicate. We will share photo books to find out about our friends and explore mark making both inside and in our garden area using a range of different tools and media.

Foundations for Maths:

During our Maths focus sessions we will be exploring maths concepts including big and small, comparing and matching objects. We will be building and stacking to make towers and exploring number through real life experiences, planned play opportunities and adult led activities.

Understanding the world

This term we will be exploring our understanding of being part of a class group, playing games and taking part in activities with our peers.

Fine Motor Skills

Beech Class will have lots of opportunities this term to develop our fine motor skills through the use of tools and different apparatus. We will be exploring and engaging in various activities available in the environment such as mark making and threading.

Art/Design

This term we will be exploring different colours and textures, using a multisensory approach. We will also explore the changing colours of Autumn.



Fun With Foods

Foods can cause anxieties for our pupils with ASD. Beech Class will be following the 'Fun with Food' programme to help develop your child's tolerance of different smells and textures. This term we will be exploring dry food materials.

Therapies

Beech Class will be accessing

- Cleverfingers
- Write from the start
- Gong Therapy
- Therapeutic Music
- Brushing
- Compressions
- Sensory Circuits
- SLIC support
- OT support

As required following observations and Assessments by our therapists

PSHE (Personal, social and health education) and RSE

Beech Class will be building positive relationships with adults and peers in their class and getting to know each other. We are developing awareness of our routines and settling in the classroom, finding out where resources belong.

Physical Education:

PE will be on a Wednesday. This term, we are exploring movement through sensory play, games, and equipment-based challenges. From rolling and crawling to climbing and early jumps, each step builds confidence, coordination, and spatial awareness in a fun,, supportive way.

Communication/Language

Personalised Speech and Language targets will be created to enable early communication. These include initiation, nursery rhymes, Curiosity Programme, Attention Autism (Explore only), EHCP targets, 1-1 interventions, and Intensive Interaction.

PE Enrichment

Pupils will have PE Enrichment on Tuesday afternoons. This term it will be Parachute games at school.



Music

This term, Beech Class will be developing our musical skills through exploring percussion instruments and a variety of musical elements. We will encounter a range of nursery rhymes and Harvest themed songs.