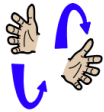
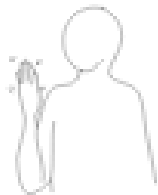


Core signs for our topic this term.



Our topic this term is ' Say Cheese' ', here are some related signs for you to practice

mirror



look



family



Finger spell 'F', circles clockwise in front of body

photo



Direct signs at object or person being photographed

Don't forget to say the words as you sign!

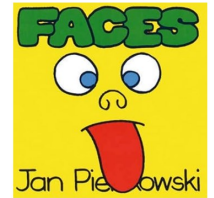


Beech Class
Key stage 1
Information
for parents/
carers
Term 5
2025

IfieldSchool

Class Teacher and Teaching Assistants:

Louisa Howarth (ITT)
Amy Cole (TA)
Darja Kulebina (TA)
Libby Banks (TA)
Kate Tucker (TA)
Liza Morris (TA)



This term our focus will be:

'Say Cheese!'

Key Texts:
'Look I'm Happy'

Faces by Jan Pienkowski



Regular events:

Swimming - Mondays

PE Enrichment - Tuesdays

PE - Wednesdays

Sensory room - Thursdays

Rainbow room - Fridays



General Information:

This term we are looking forward to the warmer days. Please send in a named bottle of sun-cream so we can reapply when needed and a suitable hat.

Please make sure your child has a swimming kit with swimming pads every Monday.

As part of our topic we will be creating books for the children about their families and people who are special to them. We would be grateful if you are able to share photos with us to help us create the book.

Homework and contact:

The Home/School Journals continue to be our principle means of communicating with you. Please check them each day. In addition messages can be emailed to the office for our attention.

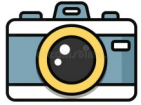
Last term we introduced the Evidence for Learning weekly photographs, we hope you are enjoying seeing a glimpse of what your child is engaging with at school each week.

Ideas for home:

If you have any photos of your child enjoying topic related activities, please feel free to share them by emailing office@ifield.kent.sch.uk

Foundations for Literacy

This term, Beech Class will engage in a range of sensory stories and experiences. Beech Class will be making their own books about their families.



Key songs will be: 'Head, shoulders, knees and toes', 'Five little fingers' and 'I've got a body'.

Foundations for Maths

This term, Beech Class will be continuing to look at different colours and numbers up to 5.

Beech class will be supported to match different items as part of our topic.



Understanding the world

This term, Beech Class will be learning to recognise and name parts of their face and parts of their body.

Beech Class will be using their senses to explore different materials found in their environment.



Fine Motor Skills

This term, Beech Class will be exploring a range of mark-making activities using large movements in the indoor and outdoor areas using a range of media. Beech Class will be exploring a range of fine motor activities for example, using pegs to hang out dolls clothing.



Expressive Arts & Design

This term, Beech Class will be exploring faces, using collage to create their own unique portraits.

Beech Class will be using dough and a variety of materials to create a face picture.



Fun With Foods

Foods can cause anxieties for our pupils with ASD.

Beech Class will continue to follow the 'Fun with Food' programme to help to develop their tolerance of different smells and textures. This term they will be introduced to foods to develop our senses.

Therapies

Beech Class will continue to access

- Therapeutic Music
- Brushing
- Compressions
- Sensory Circuits
- PECS and Makaton
- SLIC support
- OT support

As required following observations and assessments by our therapists.



PSHE (Personal, social and health education) and RSE

This term, Beech Class will continue to be supported to develop their awareness and interactions with their peers in their class. Beech Class will be learning how to wash their hands independently to support their personal hygiene. Our Nursery rhyme focus is on 'action' songs.

Physical Education:

This term Beech Class will be travelling along different apparatus using different parts of their bodies by sliding, jumping, crawling. Pupils will be encouraged to climb under and over different apparatus.



Communication/Language

This term, pupils will continue to be supported using a total communication approach. Supportive activities will continue to include Intensive Interaction, Curiosity Programme, Attention Autism and personalised activities to support EHCP outcomes.



PE Enrichment

This term Beech Class will be taking part in Rebound on a Tuesday afternoon. Pupils will have fun practicing their jumping skills.



Music

In Music this term, Beech Class will encounter action songs and will explore songs across a variety of genres. Pupils will explore tuned instruments and different pitches to develop their knowledge of musical elements.

