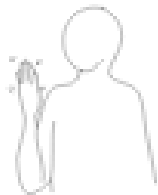


## Core signs for our topic this term.



Our topic this term is ' Say Cheese' ', here are some related signs for you to practice

mirror



look



family



photo



Don't forget to say the words as you sign!

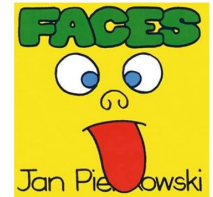


Ash Class  
Key stage 1  
Information  
for parents/  
carers  
Term 5  
2025

IfieldSchool

**Class Teacher and Teaching Assistants:**

Jayne Field  
Aiesha Jackson  
Brooke Law  
Marie James  
Victoria Hills  
Fathima Yoosof



This term our focus will be:

'Say Cheese!'

Key Texts:  
'Look I'm Happy'

Faces by Jan Pienkowski



**Regular events:**

Forest Schools: Wednesday Mornings

PE Enrichment - Tuesday afternoon:  
Monkey Bizz

PE - Friday Morning



### General Information:

This term we are looking forward to the warmer days. Please send in a named bottle of sun-cream so we can reapply when needed and a suitable hat.

Please make sure your child has wellies and waterproofs in school for Forest School on a Wednesday.

As part of our topic we will be creating books for the children about their families and people who are special to them. We would be grateful if you are able to share photos with us to help us create the book.

### Homework and contact:

The Home/School Journals continue to be our principle means of communicating with you. Please check them each day. In addition messages can be emailed to the office for our attention.

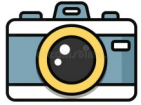
Last term we introduced the Evidence for Learning weekly Photographs and we hope you are enjoying seeing a glimpse of what your child is enjoying with at school each week.

### Ideas for home:

If you have any photos of your child enjoying topic related activities, please feel free to share them by emailing [office@ifield.kent.sch.uk](mailto:office@ifield.kent.sch.uk)

## Foundations for Literacy

This term, Ash Class will engage in a range of sensory stories and experiences. Ash Class will be making their own books about their families.



Key songs will be: 'Head, shoulders, knees and toes', 'Five little fingers' and 'I've got a body'.

## Foundations for Maths

This term, Ash Class will continue to order and match and understand number value to 5 or 10. Ash Class will be exploring and using 2D shapes in a range of activities.

Ash Class will be sorting and matching different items as part of their topic.



## Understanding the world

This term, Ash Class will be learning to recognise and name parts of their face and parts of their body.

Ash Class will be using their senses to explore different materials found in their environment.



## Fine Motor Skills

This term, Ash Class will be exploring a range of mark-making activities using large movements in the indoor and outdoor areas using a range of media.

Ash Class will be exploring a range of fine motor activities for example, using pegs to hang out dolls clothing.



## Expressive Arts & Design

This term, Ash Class will be exploring faces, using collage to add to their photographs.

Ash Class will be using dough to make a face picture.



## Fun With Foods

Foods can cause anxieties for our pupils with ASD.

Ash Class will continue to follow the Fun with Food programme to help to develop their tolerance of different smells and textures. This term they will be introduced to foods for our senses.

## Therapies

Ash Class will continue to access

- Therapeutic Music
- Brushing
- Compressions
- Sensory Circuits
- PECS and Makaton
- SLIC support
- OT support

As required following observations and assessments by our therapists.



## PSHE (Personal, social and health education) and RSE

This term, Ash Class will continue to be supported to develop their awareness and interactions with their peers in their class. Ash Class will be learning how to wash their hands independently to support their personal hygiene. Our Nursery rhyme focus is on 'action' songs.

## Physical Education:

This term Ash Class will be travelling along different apparatus using different parts of their body by sliding, jumping, crawling. Pupils will be encouraged to climb under and over different apparatus.



## Communication/Language

This term, pupils will continue to be supported using a total communication approach. Supportive activities will continue to include intensive interaction, Curiosity Programme, Attention Autism and personalised activities to support EHCP outcomes.



## PE Enrichment

This term Ash Class will be going to Monkey Bizz on a Tuesday afternoon. Pupils will have fun climbing and sliding on the large multi-level climbing frames.



## Music

In Music this term, Ash Class will encounter action songs and will explore songs across a variety of genres. Pupils will explore tuned instruments and different pitches to develop their knowledge of musical elements.

