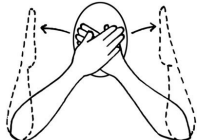


Core signs for our topic this term.

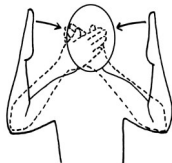


Our topic this term is 'Switch It On!', here are some related signs for you to practice.

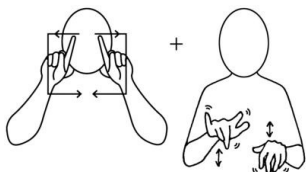
light



dark



computer



robot



on



off



Don't forget to say the words as you sign!



Oak
Class
Key stage 2
Information
for parents
Term 3
2025

lfieldSchool

Class Teacher and Teaching Assistants:

Natasha Grover (Teacher)
Ebony Toulson (TALL)
Nicky Wallington (TA)
Michelle Reynolds (TA)
Clair Fitzsimons (TA)
Nyla Tall (TA)
Kayleigh Bauerfield (MDS)

Experiences/visits/visitors: Further information to follow



Switch it on!

Regular events:

PE Enrichment this term is MEAPA gym. This will be every Wednesday morning.

Swimming will take place every Friday morning. Please make sure pupils bring in their swim kits and swim pads for this day and label everything.

PE will be every Monday morning.

General Information:

We hope that your child had a lovely Christmas and New Year break! We are looking forward to completing lots of activities linked to our new topic which is called 'Switch it on!'.

Homework and contact:

Please share books with your child every day.
Please support our use of PECs and/or communication boards or talkers by practicing at home as often as possible.
Please read your child's Home/School Journals every day for important messages and information about their learning. Please also use it to update us on anything significant in your child's life.

Ideas for home:

- Explore electronic toys at home and show your child how to turn them on and off. If appropriate show them the batteries (with supervision)
- Show them how to type their name or some letters on a computer or tablet keyboard
- Show them how to take photos and videos with a camera, tablet, or phone
- Explore light and dark (e.g. torches, shadows, light up toys)

Foundations for Literacy

This term we will be exploring stories and sensory stories linked to our topic 'Switch it on!' We will work on the following aims, as well as pupils' individual targets:

- Points to objects in pictures when named by an adult.
- Showing interest in pictures in books and turning pages.

Foundations for Maths:

This term we will be focusing on:

- Counting objects accurately up to 10
- Exploring size using words such as 'big' and 'small'
- Exploring Cause and Effect (for example pushing buttons to make things happen)
- Explore position and direction using Beebot toys

Understanding the world

We will be exploring cause and effect technology toys, seeing how to switch them on, turn them off, and what the buttons do. We will be working on activating switch toys for example switch games on the interactive whiteboard. We will be working on showing an awareness of light and dark, and investigating light making resources.

Motor Skills

We will be developing our motor skills through techniques such as screwing nuts and bolts to make our own robots, and threading activities. We will explore using different tools safely, such as developing our scissor skills. We will continue our independent physical development, working on our individual next steps, fine motor and MOVE targets.

Art/Design

This term we will be working on making pictorial representations of things we can see, for example robots, or things which give us light. We will use a range of different media such as pencils, pens and paint. We will also explore junk modelling to make computers and robots. PLEASE SEND IN ANY EMPTY CARDBOARD BOXES/ TUBES WE CAN USE!

Fun With Foods

We will continue to explore how edible substances can be fun. This is aimed at supporting those pupils who find food/eating an anxiety inducing experience. We will link food to our topic and have lots of fun along the way as we play, touch, smell, smear, cut, roll and use our whole bodies to explore food. We will also use tools to explore the foods.

Therapies

Individual pupils, as required following observations and assessments by our therapists, will be accessing:

- Gong Therapy
- Therapeutic Music
- Brushing
- Compressions
- Sensory Circuits
- SLIC support
- OT support

PSHE (Personal, social and health education) and RSE

This term we will focus on responding to praise by repeating an action, for example with switch activated toys. We will develop our ability to ask for help. We will work on demonstrating interest in computing activities.

Physical Education:

PE will be on Monday mornings this term. We will be focussing on climbing on and off of objects safely

Swimming will be on Friday mornings in the hydrotherapy pool.

Communication/Language

Personalised Speech and Language targets have been created to enable early communication. These include initiation, nursery rhymes, Curiosity Programme, PECS, Attention Autism, 1-1 interventions, and Intensive Interaction.

PE Enrichment

The pupils will have PE Enrichment on Wednesday Mornings. This term it will be MEAPA Gym.



Music

Pupils will explore the composer Holst and experience 'The Planets Suite'. Pupils will experiment and combine space sounds to create sound patterns.