

Core signs for our topic this term.

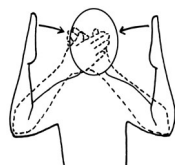


Our topic this term is 'Switch It On!', here are some related signs for you to practice.

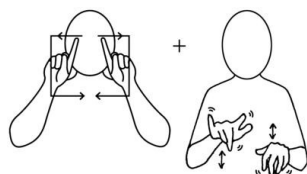
light



dark



computer



robot



on



off



Don't forget to say the words as you sign!



Chestnut Class Key stage 2 Information for parents Term 3 2025



Class Teacher and Teaching Assistants:

Sam Dury (Teacher)
Emma Gardiner (TALL)
Kate Phillips (TA)
Bethany Dimmick (TA)
Sarah Adams (TA)
Vicki Stanford
Savannah Cooper (TA)
Somina Begum (TA) Lauren Richardson (MDS)



Switch it on!

Experiences/visits/visitors: Further information to follow

Regular events:

PE Enrichment this term is Rebound. This will be every Tuesday afternoon.
Swimming will take place every Monday morning. Please make sure pupils bring in their swim kits and swim pads for this day and label everything.
PE will be every Wednesday morning.

General Information:

We hope that your child had a lovely Christmas and New Year break! We are looking forward to completing lots of activities linked to our new topic which is called 'Switch it on!'.

Homework and contact:

Please share books with your child every day.
Please support our use of PECs and/or communication boards or AAC's by practicing at home as often as possible.
The Home/School Journals are in place for us both to write in so we can keep each other up to date about your children. Please also use it to update us on anything significant in your child's life.
If you have any questions please contact the school office or speak to one of the team when dropping off or picking up.

Ideas for home:

- Explore electronic toys at home and show your child how to turn them on and off. If appropriate show them the batteries (with supervision)
- Explore light and dark (e.g. torches, shadows, light up toys)
- Explore cameras and 'selfie' mode to show your child their reflection.

<p>Foundations for Literacy</p> <p>This term we will be exploring stories and sensory stories linked to our topic 'Switch it on!' We will work on the following aims, as well as pupils' individual targets:</p> <ul style="list-style-type: none"> • Points to objects in pictures when named by an adult. • Showing interest in pictures in books and turning pages. 	<p>Foundations for Maths:</p> <p>This term we will be focusing on:</p> <ul style="list-style-type: none"> • Exploring Cause and Effect (for example pushing buttons to make things happen). • Explore position and direction using Beebot toys. • Exploring big and small. 	<p>Understanding the world</p> <p>We will be exploring cause and effect technology toys, seeing how to switch them on, turn them off, and what the buttons do. We will be working on activating switch toys for example switch games on the interactive whiteboard. We will be working on showing an awareness of light and dark, and investigating light making resources. and learn about the world around us along the way.</p>	<p>Motor Skills</p> <p>We will be developing our motor skills through techniques such as screwing nuts and bolts to make our own robots, and threading activities. We will continue our independent physical development, working on our individual next steps, fine motor and MOVE targets.</p>
<p>Art/Design</p> <p>This term we will be working on making pictorial representations of things we can see, for example robots, or things which give us light. We will use a range of different media such as pencils, pens and paint. We will also explore junk modelling to make computers and robots. PLEASE SEND IN ANY EMPTY CARDBOARD BOXES/ TUBES WE CAN USE!</p>	<p>Fun With Foods</p> <p>We will continue to explore how edible substances can be fun. This is aimed at supporting those pupils who find food/eating an anxiety inducing experience. We will link food to our topic and have lots of fun along the way as we play, touch, smell, smear, cut, roll and use our whole bodies to explore food. We will also use tools to explore the foods.</p>	<p>Therapies</p> <p>Individual pupils, as required following observations and assessments by our therapists, will be accessing:</p> <ul style="list-style-type: none"> • Gong Therapy • Therapeutic Music • Brushing • Compressions • Sensory Circuits • SLIC support • OT support 	<p>PSHE (Personal, social and health education) and RSE</p> <p>This term we will focus on responding to praise by repeating an action, for example with switch activated toys. We will develop our ability to ask for help. We will work on demonstrating interest in computing activities.</p>
<p>Physical Education:</p> <p>PE will be on Wednesday mornings this term. We will be focussing on rolling a ball to a target e.g. a familiar adult.</p> <p>Swimming will be on Monday mornings in the school pool.</p>	<p>Communication/Language</p> <p>Personalised Speech and Language targets have been created to enable early communication. These include initiation, nursery rhymes, Curiosity Programme, PECS, 1-1 interventions, and Intensive Interaction.</p>	<p>PE Enrichment</p> <p>The pupils will have PE Enrichment on Tuesday afternoons. This term it will be rebound.</p>	<p>Music</p> <p>Pupils will explore the composer Holst and experience 'The Planets Suite'. Pupils will also experiment and combining space sounds to create sound patterns.</p>