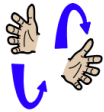


Core signs for our topic this term.



Our topic this term is 'What's that sound?', here are some related signs for you to practice

hear



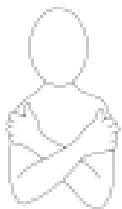
loud



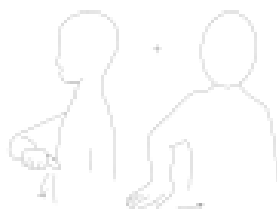
quiet



bear



Farm



Don't forget to say the words as you sign!



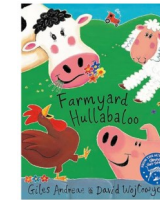
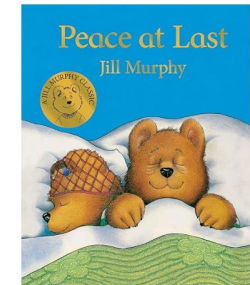
Ash Class
Key stage 1
Information
for parents/
carers
Term 3
2025

IfieldSchool

Class Teachers and Teaching

Assistants:

Jayne Field
Jennifer Cook
Victoria Hills
Marie James
Aiesha Jackson



This term our focus will be:

'What's that Sound?'

Key Texts:

- Peace at Last
- The Farmyard Hullabaloo
- Hullabaloo

Regular events:

Swimming- Wednesday Morning

PE Enrichment - Tuesday afternoon

PE - Friday Morning

General Information:

This term we will be busy using our senses to listen to and discover different sounds in our environment

In addition we are also looking forward to learning about the different animals and where they live and what they need.

We are continuing to support Ash Class to develop their independence by encouraging them to put on and take off their coats and shoes as independently as possible, putting them in the correct places.



Homework and contact:

The Home/School Journals continue to be our principle means of communicating with you. Please check them each day. In addition messages can be emailed to the office for our attention.

Last term we introduced the Evidence for Learning weekly photographs, we hope you are enjoying seeing a glimpse of what your child is engaging with at school each week.

Ideas for home:

If you have any photos of your child enjoying topic related activities, please feel free to share them by emailing office@ifield.kent.sch.uk

Foundations for Literacy

This term, Ash Class will engage in a range of sensory experiences as they make their way through the pages of the key text. Ash Class will be learning to recognise and match different sounds to the objects and animals in the story.

Ash Class will be using symbols and pictures to make simple sentences using colourful semantics.

Foundations for Maths

During their Maths focus sessions, Ash Class will be learning about the differences between day and night. Ash Class will be ordering and sequencing activities and events of the day.

Ash Class will be exploring clocks and ordering numbers.



Understanding the world

Ash Class will be exploring and finding out where things belong in a house, matching items to the appropriate room.

Ash Class will be finding out about the animals on a farm, where they live and what they need to be healthy. Ash Class will be responding to and making loud and soft sounds.



Fine Motor Skills

This term Ash Class will be practising their pincer grips to begin to pull zips and put their wellies on. They will also be practising their postal skills in order to support their fine motor development.

Ash Class will continue to explore different media for mark making using big and small movements.

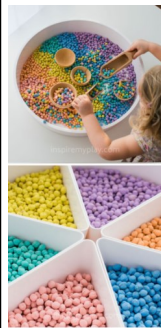
Expressive Arts & Design

Ash Class will be exploring colours and patterns around us in the home/school and in the wider outdoors environment.

Ash Class will be using different construction materials to put together pieces which can move e.g. cogs.



Fun With Foods



Foods can cause anxieties for our pupils with ASD. Ash Class will be continuing to follow the Fun with Food programme to help to develop the pupils' tolerance of different smells and textures.

Therapies

Ash Class will continue to access

- Therapeutic Music
- Brushing
- Compressions
- Sensory Circuits
- PECS and Makaton
- SLIC support
- OT support

As required following observations and assessments by our therapists.



PSHE (Personal, social and health education) and RSE

This term, Ash Class will be engaging with a range of exciting sensory activities designed to explore and understand different emotions.



Ash Class will be using mirrors to look at our faces and different expressions.

Physical Education:

This term Ash Class will be developing their skills to travel along, under or across different apparatus in a safe way.



In swimming we will continue to develop our confidence in the water.

Communication/Language

This term, the children's personal Speech and Language targets will be reviewed and updated to reflect their progress with their communication skills.

These will be shared at Parents' Evening.

Supportive activities will continue to include intensive interaction, the Curiosity Programme, Attention Autism and personalised activities to meet EHCP targets.



PE Enrichment

This term Ash Class will be using bikes and scooters on the playground and taking part in parachute games and activities in the hall.



Music



This term, Hannah will be teaching Ash Class Pupils to explore a variety of sounds, with a particular focus on pitch. Pupils will have the chance to use a variety of tuned percussion to make their own sound patterns.