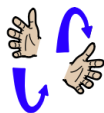


## Core signs for our topic this term.

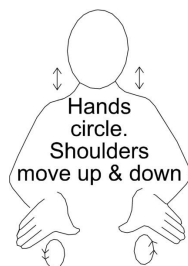


Our topic this term is 'Artic Animals, here are some related signs for you to practice.

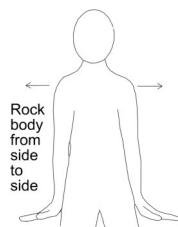
Polar bear



seal



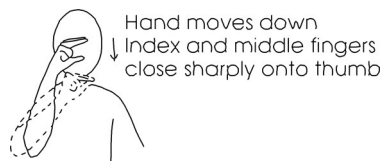
penguin



whale



arctic fox



Don't forget to say the words as you sign!



## Magpie Class Information Booklet

Term 1  
Nov/Dec  
2024



### Class Teacher and TAs

Stephanie Batten (Teacher)  
Rebecca Harris (Form Tutor)  
Janie Rumley (TALL)  
Harshika Liyanage Dona (TA)  
Sharon Weeks (TA)



### Regular events:

Tuesday: PE  
Thursday: PE Enrichment

### General Information

After a great start to the new academic year, we are now looking forward to all of the exciting opportunities and experiences of term 2.

This term we will be learning all about 'Artic Animals'.

### Homework and Contact

Thank you for using the Home/School Journals - the comments we receive are always useful; please continue to let us know if we can help with any concerns or if there is anything interesting to tell us.

## Interventions

Tacpac, Intensive interaction, sensory circuit and sensory stories are daily interventions which meet pupils sensory needs and develop communication and interaction skills.



## Preparing for adulthood

Pupils will be developing their social interaction skills, with staff and their peers through a range of activities and experiences.

We will be focusing on the difference between friendships and relationships. E.g. class peers verses relationships with family.

## Communication

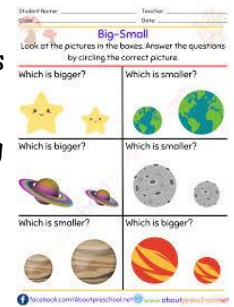
Pupils will work on personalised speech and language targets. Pupils will be using a range of communication strategies, such as Intensive Interaction and use of E-Tran and Auditory Scanning books.



## Maths

Magpie class will be exploring temperatures in terms of 'hot' and 'cold'.

We will be working on matching and finding 'the same'.



## Topic

In our topic work this term, we are focussing on "Arctic Animals". Pupils will be exploring animals such as, polar bears and penguins through sensory based activities, such as exploring a variety of textures.



## English



Pupils will continue to develop their communication and literacy skills.

We will be sharing stories and communicate our preferences.

## Employability

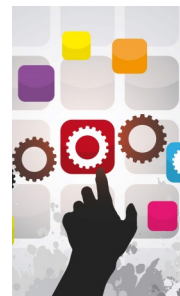
Magpie class pupils will be exploring pictures and activities on the screen, related to our topic of Arctic Animals.

## PSED/Citizenship/RSE

This term's focus will be around mental wellbeing and identifying different behaviours associated with different emotions, such as laughing when you are happy.

## Digital Skills

Pupils will develop their digital skills through use of a variety of cause-and-effect and art programmes on the touchscreen.



## PE Enrichment

Pupils will take part in various activities throughout the school year.

