

Core signs for our topic this term.



Our topic this term is 'Minibeasts', here are some related signs for you to practice.

Spider



Worm



Butterfly



Fly



Sing



Don't forget to say the words as you sign!



Beech Class Key stage 1 Information for parents Term 4 2024

IfieldSchool

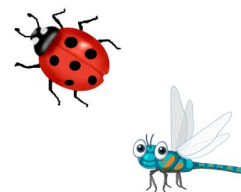
Class Teacher and Teaching Assistants:

Louisa Howarth (UQ Teacher)
Jean Duncan (Teacher)
Carrie Stephenson (TA)
Jeni Lwin (TA)
Gurpreet Kaur (TA)
Sarah Adams (TA)



This term our focus will be:

'Minibeasts'



Regular events:

PE Enrichment will be each Tuesday afternoon and this term we will be Cycling.

Swimming will take place each Monday unless advised. Please make sure pupils bring in their swim kits for this day.

PE will take place each Wednesday morning.

General Information:

We are looking forward to completing lots of activities linked to our new topic which is 'Minibeasts'. We will be learning about different insects including, spiders, worms and butterflies and learning about their different types of habitat.

Homework and contact:

Please share books with your child every day.
Please support our use of PECs by practicing at home as often as possible.

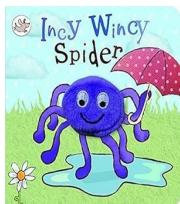
The Home/School Journals are in place for us both to write in so we can keep each other up to date about your children.
If you have any questions please contact the school office or speak to one of the team when dropping off or picking up.

Ideas for home:

Please continue to share the fun you have at home and the toys and games your children like play with.

Foundations for Literacy

During our Literacy focus we will share sensory stories. We will be looking at familiar nursery rhymes like, 'Incy Wincy Spider' and 'There's a worm at the bottom of the garden'. We will also be mark making using mud and paint.



Foundations for Maths:

During our Maths focus sessions we will be looking at numbers in everyday contexts and exploring the concept of number through sensory play learning opportunities.

We will be exploring cause and effect toys and engaging in our very own 'Incy Wincy Spider' sessions where children will have the opportunity to wash Incy down the drain.

Understanding the world

This Term Beech Class will be looking at worms and minibeasts around the school site.

We will be accessing natural tuff trays with various materials such as grass, leaves and mud.



Fine Motor Skills

Beech Class will have lots of opportunities to develop their gross and fine motor skills.

We will be developing our hand/eye co-ordination and challenging ourselves to catch butterflies in a game of 'Elefun'. We will be exploring large puzzles and shape sorters to develop our fine motor skills.

Art/Design

This term we will be focussing on the colours red, blue and yellow. We will be using sensory bins in these colours for pupils to explore. We will also explore colour mixing using different parts of our bodies. We are excited to see some amazing creations!



Continuous provision

We will continue to encourage children to be active learners through engaging in interactive and sensory play based experiences, enhancing learning and providing children with opportunities to challenge themselves and take risks.

Therapies

Beech Class will be accessing

- Gong Therapy
- Therapeutic Music
- Brushing
- Compressions
- Sensory Circuits
- SLIC support
- OT support

As required following observations and Assessments by our therapists

PSHE (Personal, social and health education) and RSE

Beech Class will continue to build positive relationships and interactions with all members of staff and each other.

Physical Education:

PE will be on a Wednesday and this term we will have our sessions with Coach Colin in the sports hall.

Swimming will be on a Monday (unless otherwise advised) and this term we are continuing to develop our confidence when in the water.

Communication/Language

Personalised Speech and Language targets will be created to enable early communication. These include initiation, nursery rhymes, Curiosity Programme, Attention Autism, EHCP targets, 1-1 interventions, and Intensive Interaction.

PE Enrichment

Pupils will have PE Enrichment on Tuesday afternoons.

This term Beech Class will be Cycling and this will involve balance bikes and bikes suitable for our PMLD children. We will be learning about the importance of staying safe and wearing our bike helmets.

Music

Some of Beech Class will be experiencing 'Gong Therapy' during our music session this term. This aims to aid regulation and wellbeing.

Beech Class will be enjoying music sessions where we will be learning to respond to music and follow simple instructions. We will explore lots of different instruments and the sounds they make.