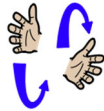


## Core signs for our topic this term.



Our topic this term is 'Once Upon a Time', here are some related signs for you to practice.

**Fox**



**Grandma**



**Wolf**



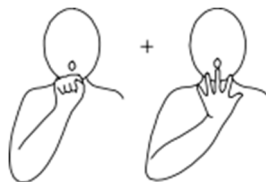
**Run**



**Little**



**Blow**



**Pig**



Don't forget to say the words as you sign!



### Class Teacher and Teaching Assistants:

Louisa Howarth (UQTeacher)  
Laura Hiller (TA)  
Carrie Stephenson (TA)  
Gurpreet Kaur (TA)  
Jenni Lwin (TA)  
Sarah Adams (TA)

Beech Class  
Key stage 1  
Information  
for parents  
Term 3  
2024

This term our focus will be;

'Once Upon a Time'.



### Regular events:

PE Enrichment, each Tuesday afternoon will be visiting Larkin Farm. Please send in suitable clothing and footwear for all possible weather conditions.  
Swimming will take place each Monday. Please make sure pupils bring in their swim kits for this day.  
PE will take place each Wednesday morning which will be at MEAPA Gymnastics Club.

### General Information:

Happy New Year! We hope you had a lovely Christmas. We are looking forward to completing lots of activities linked to our new topic which is 'Once Upon a Time, sharing and learning about the characters and stories in 'The Gingerbread Man' and 'The 3 Little Pigs'.

### Homework and contact:


Please share books with your child every day.  
The Home/School Journals are in place for us both to write in so we can keep each other up to date about your children. If you have any questions please contact the school office or speak to one of the team when dropping off or picking up.

### Ideas for home:

Key signs for our topic this term:  
Story Who?



Please continue to share the fun you have at home and the toys and games your children like to play with.  
Have lots of fun playing together with your child with their favourite toys this will help with their communication, vocabulary and engagement.

<p><b>Foundations for Literacy</b></p> <p>During our Literacy focus we will share sensory stories. Beech Class will be learning about the key characters in the stories and begin to engage with a picture book/sensory story. We will explore how children turn the pages in a book and develop how they show anticipation to communicate a repetitive word/sound in a story - using signs, visuals and switches.</p>	<p><b>Foundations for Maths:</b></p> <p>During our Maths focus sessions we will look to gain further understanding that some things exist, even when out of sight. We will also be counting in the environment to develop number order such as when building towers and continuing to sing number rhymes and songs.</p>	<p><b>Understanding the world</b></p> <p>This Term Beech Class will be learning about the effects of dough and will be manipulating it in a variety of ways. We will be exploring natural materials such as mud, straw and wooden bricks. We will also look at new objects in the environment and using our senses exploring different smells.</p>	<p><b>Fine Motor Skills</b></p> <p>Beech Class will have lots of opportunities to develop their fine motor skills. Beech class will be stacking bricks on top of each other and manipulating playdough. We will also be using different tools to make marks with play dough and to cut it.</p> 
<p><b>Art/Design</b></p> <p>This term we will be exploring different materials textures and building structures using bricks, duplo and crates. We will also be working with dough looking at different ways it stretches, bends, squashes and manipulating it in different ways to make marks.</p>	<p><b>Fun With Food</b></p> <p>Foods can cause anxieties for our pupils with ASD. Beech Class will be following the Fun with Food programme to help develop your child's tolerance of different smells and textures.</p>	<p><b>Therapies</b></p> <p>Beech Class will be accessing</p> <ul style="list-style-type: none"> <li>• Gong Therapy</li> <li>• Therapeutic Music</li> <li>• Brushing</li> <li>• Compressions</li> <li>• Sensory Circuits</li> <li>• SLIC support</li> <li>• OT support</li> </ul> <p>As required following observations and Assessments by our therapists</p>	<p><b>PSHE (Personal, social and health education) and RSE</b></p> <p>Beech Class will be building on our positive relationships with adults and peers in their class, sharing space and resources with others. We will be developing acceptance when following simple boundaries e.g. wait and finished. We will also be developing our self-regulation.</p>
<p><b>Physical Education:</b></p> <p>PE will be on a Wednesday, this term we are going to MEAPA Gym. The children will be learning to use different apparatus in a safe way, using different parts of their body. Swimming will be on a Monday and Beech Class will be continuing to develop their confidence and skills in the water.</p>	<p><b>Communication/Language</b></p> <p>Personalised Speech and Language targets will be created to enable early communication. These include initiation, nursery rhymes, Curiosity Programme, Attention Autism (Explore only), EHCP targets, 1-1 interventions, and Intensive Interaction.</p>	<p><b>PE Enrichment</b></p> <p>The pupils will have PE Enrichment on Tuesday afternoons.</p> <p>This term Beech Class will be visiting Larkin Farm.</p>	<p><b>Music</b></p> <p>Some of Beech class will be experiencing 'Gong Therapy' during our music session this term. This aims to aid regulation and wellbeing.</p> <p>Some of Beech Class will also be exploring rhythmic and melodic instruments.</p>