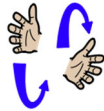


Core signs for our topic this term.



Our topic this term is 'Forgotten Toys', here are some related signs for you to practice.

car



teddy



robot



dinosaur



play



build



Don't forget to say the words as you sign!



Hazel Class Key stage 2 Information for parents Term 3 2024



Class Teacher and Teaching Assistants:

Lauren Homewood (Teacher)
David Rose (Teacher)
Ola Awotunde (TA)
Kerry Hillier (TA)
Rachel Hammond (TA)
Vicky Barney (TA)

Regular events:



PE Enrichment will be every Tuesday afternoon and this term will be a Woodland Walk. Please ensure that your child has warm winter accessories e.g. hat, gloves, scarf, coat and wellie boots. Parents can also send in waterproof trousers if desired.

Swimming will be on Tuesdays. Please send in swim kits for this day that is clearly labelled.

PE every Thursday morning. Please make sure pupils bring in their PE kits for this day.

Forgotten Toys

General Information:

Welcome back! We hope you enjoyed the half term. We are looking forward to lots of activities linked to our new topic 'Forgotten Toys'.

Homework and contact:


Please share books with your child every day. Please support our use of PECs by practicing at home as often as possible.

The Home/School Journals are in place for us both to write in so we can keep each other up to date about your children.

If you have any questions please contact the school office or speak to one of the team when dropping off or picking up.

Ideas for home:

- Set up a teddy bear's picnic with your toys. Have a go at making sandwiches and pouring drinks.
- Singing songs. 'Ten in the bed', [10 Little Dinosaurs](#) | [Kids Songs](#) | [Super Simple Songs \(youtube.com\)](#)
- Building houses for your toys using boxes, blocks or Lego.

<p>Foundations for Literacy</p> <p>During our Literacy focus sessions we will listen to lots of appropriate stories about Toys. We will be focusing on teddies, dinosaurs and robots! We will share sensory stories and explore lots of mark making in many different forms. We will enjoy familiar songs and rhymes and use lots of visuals to help us communicate.</p>	<p>Foundations for Maths:</p> <p>During our Maths focus sessions we will be exploring maths concepts including number, identifying one more/one less and developing our concept of time. We will do this through a range of themed activities and continuous provision. Children will be able to explore counting teddies and numicon to count and add in a variety of ways.</p>	<p>Understanding the world</p> <p>This Term we will be exploring a range of toys. We will be focusing on dinosaurs, teddies and robots. Children will have access to a range of toys to explore to develop their understanding of cause and effect. Children will explore using robotic toys, such as switch activated toys and beebots.</p>	<p>Fine Motor Skills</p> <p>Hazel Class will have lots of opportunities this term to develop our fine motor skills through sensory bags filled with different objects. We will use a range of resources including joining Lego blocks, threading boards, pencil control worksheets and manipulating playdough.</p>
<p>Art/Design</p> <p>We will be exploring Art through using a range of materials to add texture and colours to our creations. We will also be exploring pattern and shape by using different resources. We will look at the prints that different toys make when stamped with paint.</p>	<p>Fun With Foods</p> <p>Foods can cause anxieties for pupil with ASD. Hazel Class will be following the Fun with foods programme to help develop your child's tolerance of different smells and textures.</p> <p>This Term we will be continuing to work on moist textures.</p>	<p>Therapies</p> <p>Hazel Class will be accessing</p> <ul style="list-style-type: none"> • Cleverfingers • Fun with food • Gong Therapy • Therapeutic Music • Brushing • Compressions • Sensory Circuits • SLIC support • OT support <p>As required Following observations and Assessments by our therapists</p>	<p>PSHE (Personal, social and health education) and RSE</p> <p>Hazel Class will be learning about making choices about where they want to go or what activities they want to access indoor and outdoor. We will be developing independence when finding own coat/bag and hanging them up on own pegs. Hazel Class will also be learning about what makes a good friend.</p>
<p>Physical Education:</p> <p>PE will be on Thursday mornings this term. Many of these sessions will take place outside so please ensure your child has weather appropriate clothing to join in including coats and hats. Swimming will be on Tuesdays. Our focus will be water confidence, developing independence in the pool and floating safely on our backs.</p>	<p>Communication/Language</p> <p>Personalised Speech and Language targets will be created to enable early communication. These include initiation, nursery rhymes, Curiosity Programme, Chatterbugs Programme, Communication Carousel, Attention Autism, EHCP targets, 1-1 interventions, and Intensive Interaction.</p>	<p>PE Enrichment</p> <p>The pupils will have PE Enrichment on Tuesday afternoons. This term it will be Woodland Walk!</p> 	<p>Music</p> <p>Hazel Class will explore music through songs and rhymes. Children will also explore rhythms and a range of sounds during gong sessions and music lessons.</p>