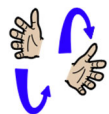


Core signs for our topic this term.



Our topic this term is 'We are Ash class', here are some related signs for you to practice.



Ash class



School



Friends



Help



Play



Learn

Don't forget to say the words as you sign!



Ash Class Key stage 1 Information for parents Term 1 2023



Class Teacher and Teaching Assistants:

Jayne Field (Teacher)
Anna Vitalis (Teacher Wednesday's)
Jennifer Cook (TA)
Lorna Cutler (TA)
Vicky Barney (TA)
Dean Bowrage (TA)

Experiences/visits/visitors:

As part of this exciting topic we will be being visited by some every day heroes seen around school.

Regular events:

PE Enrichment each Tuesday afternoon will be Creative Movement.
Swimming will take place each Wednesday (Please make sure pupils bring in their swim kits for this day).
PE will take place each Friday afternoon (Please make sure pupils bring in their PE kits for this day).

We are 'Ash Class'

General Information:

Welcome back! We hope you had a lovely summer. We are looking forward to completing lots of activities linked to our new topic which is 'We are Ash Class'.

Homework and contact:

Please share books with your child every day.
Please support our use of PECs by practicing at home as often as possible.
The Home/School Journals are in place for us both to write in so we can keep each other up to date about your children.
If you have any questions please contact the school office or speak to one of the team when dropping off or picking up.

Ideas for home:

Please continue to share the fun you have at Home and the toys and games your children like play with.

Foundations for Literacy

During our Literacy focus we will share sensory stories, including The Colour Monster Goes to School and The rainbow fish. We will enjoy familiar songs and rhymes and use visuals to help us communicate.

We will share photo books to find out about our friends

We will explore lots of mark making both inside and in our garden area using a range of different tools and media.

Foundations for Maths:

During our Maths focus sessions we will be exploring maths concepts including big and small, comparing and matching objects. We will be building and stacking to make towers. We will be counting objects in the environment. These will be explored through real life experiences, planned play

Understanding the world

This Term we will be exploring our understanding of being part of a class group, playing games and taking part in activities with our peers and learning

Fine Motor Skills

Ash Class will have lots of opportunities this term to develop our fine motor skills through the use of tools and different apparatus. Whilst exploring and engaging in the various activities available in the environment.

Art/Design

This term we will be exploring different colours and textures, using a multi-sensory approach. We will also explore the changing colours of Autumn



Fun With Foods

Foods can cause anxieties for our pupils with ASD. Ash Class will be following the Fun with Food programme to help develop your child's tolerance of different smells and textures. This Term we will be working on dry food materials

Therapies

Ash Class will be accessing

- Cleverfingers
- Write from the start
- Gong Therapy
- Therapeutic Music
- Brushing
- Compressions
- Sensory Circuits
- SLIC support
- OT support

As required following observations and Assessments by our therapists

PSHE (Personal, social and health education) and RSE

Ash Class will be building on our positive relationships with adults and peers in their class, getting to know our friends. We are developing awareness of our routines and settling in the classroom finding out where resources belong.

Physical Education:

PE will be on a Friday, this term we are using the trampoline. Swimming will be on a Wednesday. We are continuing to develop our confidence in the water.

Communication/Language

Personalised Speech and Language targets will be created to enable early communication. These include initiation, nursery rhymes, Curiosity Programme, Attention Autism (Explore only), EHCP targets, 1-1 interventions, and Intensive Interaction.

PE Enrichment

The pupils will have PE Enrichment on Tuesday afternoons. This term it will be Creative Movement. We will be using scarfs and different materials to move to music and create dances related to our story of the week.



Music

Some of Ash class will be experiencing 'Gong Therapy' during our music session this term. This aims to aid regulation and wellbeing.

Some of Ash class will be enjoying a music session where we will be learning to respond to music and follow simple instructions. We will explore lots of different instruments too.