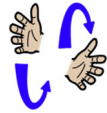


## Core signs for our topic this term.



Our topic this term is 'Everyday Heroes', here are some related signs for you to practice.

nurse



cook



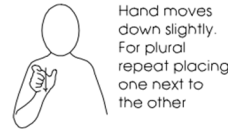
fix



clean



hero



safe



Don't forget to say the words as you sign!



## Hazel Class Key stage 2 Information for parents Term 1 2023

### Class Teacher and Teaching Assistants:

Lauren Homewood (Teacher)  
David Rose (Teacher)  
Kerry Hillier (TA)  
Ola Awotunde (TA)  
Cara Broad (TA)  
Rachel Hammond (TA)

### Experiences/visits/visitors:

As part of this exciting topic we will be being visited by some every day heroes seen around school.



## Every day heroes

### Regular events:

PE Enrichment will take place each Tuesday afternoon and will be Cycling.  
PE will take place each Thursday morning (Please make sure pupils bring in their PE kits for this day).  
Swimming will take place each Tuesday morning (Please make sure pupils bring in their PE kits for this day).  
MEAPA gym visits Wednesday morning (Please make sure pupils bring in their PE kits for this day).

### General Information:

Welcome back! We hope you had a lovely summer. We are looking forward to lots of activities linked to our new topic 'Every day heroes'.

### Homework and contact:

Please share books with your child every day. Please support our use of PECs by practicing at home as often as possible.

The Home/School Journals are in place for us both to write in so we can keep each other up to date about your children.

If you have any questions please contact the school office or speak to one of

### Ideas for home:

- Role play teddy hospitals
- Sharing stories and books
- Sorting recycling
- Baking at home
- Counting actions e.g. jumping, clapping, stamping
- Singing nursery rhymes e.g. 'Head, Shoulders, Knees and Toes', 'Miss Polly had a Dolly', 'Pat-a-cake', '5 Current Buns'

<p><b>Foundations for Literacy</b></p> <p>We will be exploring stories and songs about people who help us. We will develop out listening and attention skills using Attention Autism sessions and sensory stories. We will develop our mark making both inside and outside using a range of child initiated and adult initiated activities.</p>	<p><b>Foundations for Maths:</b></p> <p>During our maths focus sessions we will be exploring maths concepts including number, shape, size, sequencing, measure and time through real life experiences and planned play opportunities and adult led activities.</p>	<p><b>Understanding the world</b></p> <p>This Term we will be exploring our understanding of the roles of Everyday Heroes within the school community. We will focus on the school cooks, the maintenance team and the medical team who all help to keep us happy, safe and cared for when at school. We will do this through visits, exploratory play opportunities and stories.</p>	<p><b>Fine Motor Skills</b></p> <p>Hazel class will use a wide range of tools and equipment to develop our fine motor skills e.g. liquid syringes, bandages and cooking utensils. Children will have opportunities to engage with daily fine motor stations, focusing on developing hand-eye coordination and muscle strength in their hands and fingers.</p>
<p><b>Art/Design</b></p> <p>We will be exploring colour mixing and exploring using a range of conventional and unconventional tools to do so such as Brooms, syringes and cooking utensils.</p> <p>We will be exploring different textures of materials and beginning to develop vocabulary linked to this. Textures may include food items to support exploration of food for children who have anxiety with food.</p>	<p><b>Music</b></p> <p>We will be singing songs and exploring a range of different instruments and the sounds they make.</p> <p>We will also be joining in Gong sessions.</p>	<p><b>Therapies</b></p> <p>Hazel Class will be accessing</p> <ul style="list-style-type: none"> <li>• Cleverfingers</li> <li>• TAC PAC</li> <li>• Sensory Room</li> <li>• Therapeutic Music</li> <li>• Brushing</li> <li>• Compressions</li> <li>• Sensory Circuits</li> <li>• SLIC support</li> <li>• OT support</li> </ul> <p>As required Following observations and Assessments by our therapists</p>	<p><b>PSHE (Personal, social and health education) and RSE</b></p> <p>Hazel Class will be learning about how our emotions feel within our own bodies so that we can begin to understand our own feelings and those of others. We will focus on the feelings of happy, sad and angry.</p>
<p><b>Physical Education:</b></p> <p>PE will be on Thursday mornings this term. Many of these sessions will take place outside so please ensure your child has weather appropriate clothing to join in. Swimming will be on Tuesdays. Our focus will be water confidence, developing independence in the pool and changing and floating safely on our backs.</p> <p>We will be visiting MEAPA gym on Wednesday mornings.</p>	<p><b>Communication/Language</b></p> <p>Personalised Speech and Language targets will be created to enable early communication. These include initiation, nursery rhymes, Curiosity Programme, Attention Autism (Explore only), EHCP targets, 1-1 interventions, and Intensive Interaction.</p>	<p><b>PE Enrichment</b></p> <p>The pupils will have PE Enrichment on Tuesday afternoons. This term it will be Cycling.</p> <p>We will also be visiting MEAPA gym on Wednesday mornings</p> 